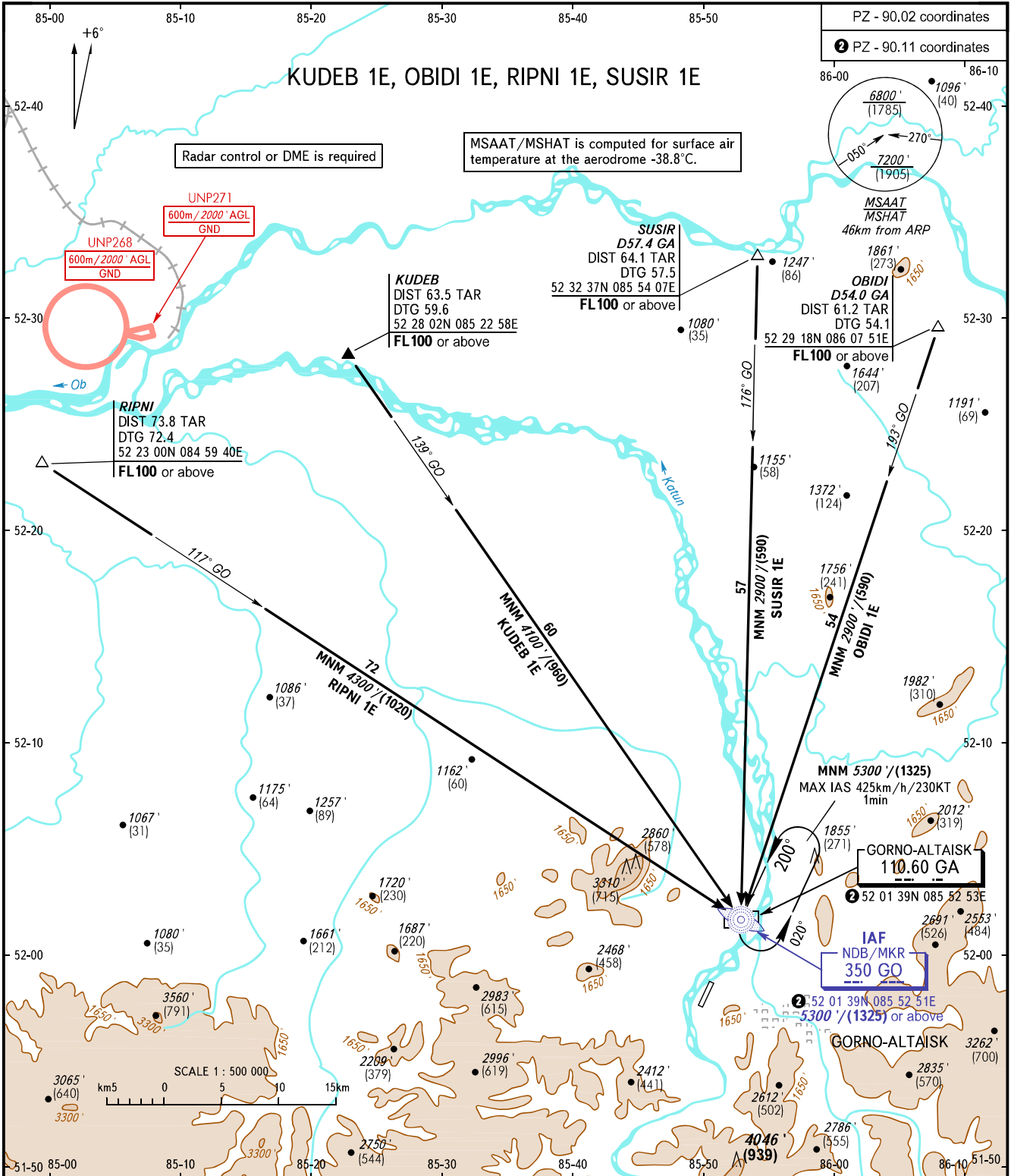


STANDARD ARRIVAL CHART  
INSTRUMENT (STAR) - ICAO

GORNO-ALTAISK, RUSSIA  
GORNO-ALTAISK  
RWY 20

TRANSITION  
LEVEL: 1



DIALIZ VYSHKA 133.000

- 1 TRANSITION LEVEL:
- FL090 when QNH is 1013 hPa (760mm mercury column) or above;
  - FL100 when QNH is 977 hPa (733mm mercury column) or above, but less than 1013 hPa (760mm mercury column);
  - FL110 when QNH is less than 977 hPa (733mm mercury column).

BEARINGS AND TRACKS ARE MAGNETIC  
ALTITUDES IN FEET  
HEIGHTS IN METRES  
ELEVATIONS IN FEET AND METRES  
DISTANCES IN KILOMETRES

Alt set: -QNH(QFE on req);  
-hPa(mm on req).