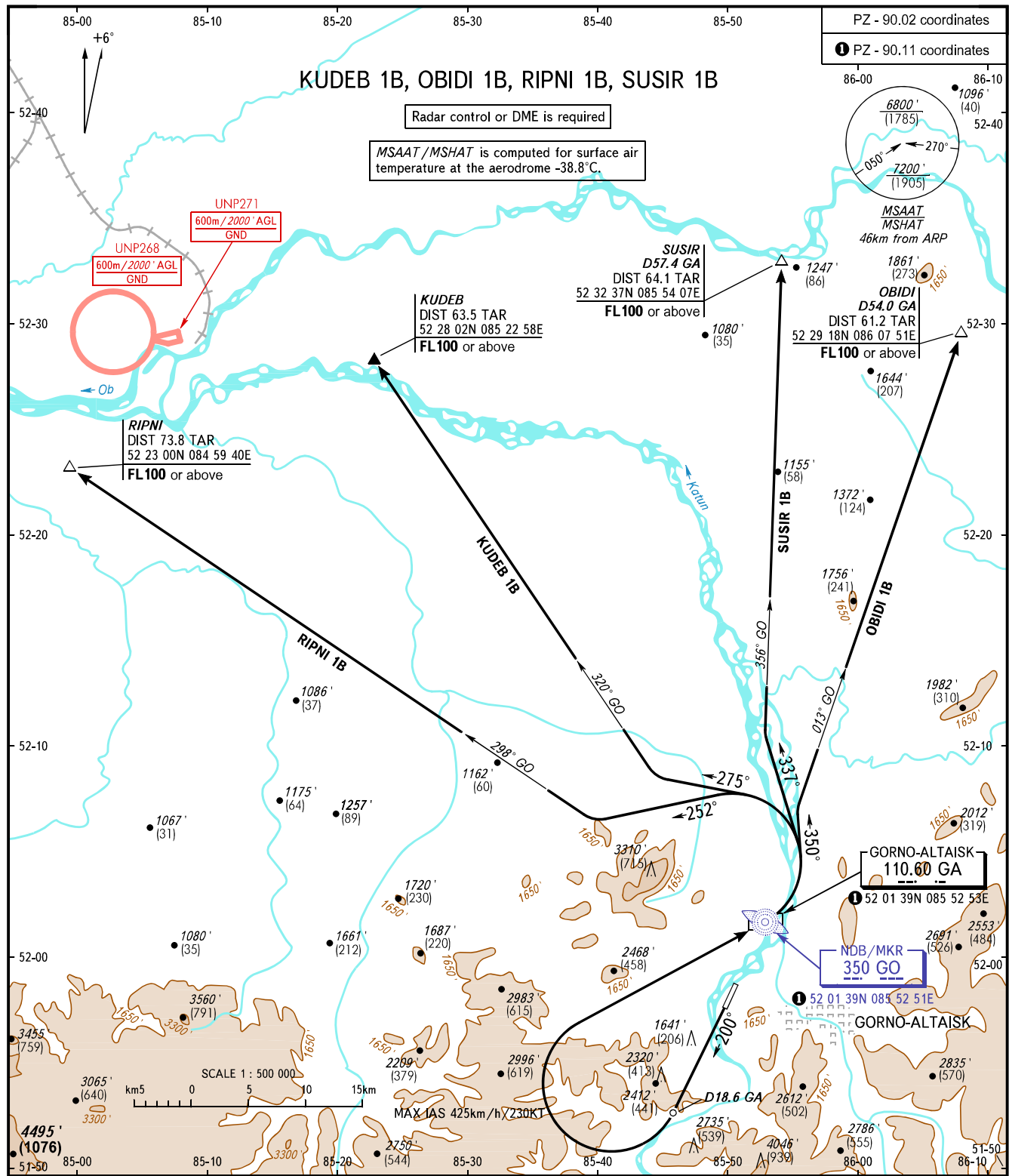


STANDARD DEPARTURE CHART
INSTRUMENT (SID) - ICAO

GORNO-ALTAISK, RUSSIA
GORNO-ALTAISK
RWY 20

TRANSITION ALT: **8000'**
TRANSITION HGT: **(2150)**



DIALIZ VYSHKA 133.000		<p>WARNING:</p> <ol style="list-style-type: none"> 1. MNM climb gradient required due to obstacles is 6.9% up to 3300'/(712). 2. TAR distance is indicated from ARP. 3. Radar control is required when using RIPNI 1B, KUDEB 1B SIDs.
<p>BEARINGS AND TRACKS ARE MAGNETIC ALTITUDES IN FEET HEIGHTS IN METRES ELEVATIONS IN FEET AND METRES DISTANCES IN KILOMETRES</p>		
<p>Alt set: -QNH(QFE on req); -hPa(mm on req).</p>		<p>AIRAC AMDT 09/23</p> <p>Federal Air Transport Agency</p>
<p>CHANGE: New chart</p>		