

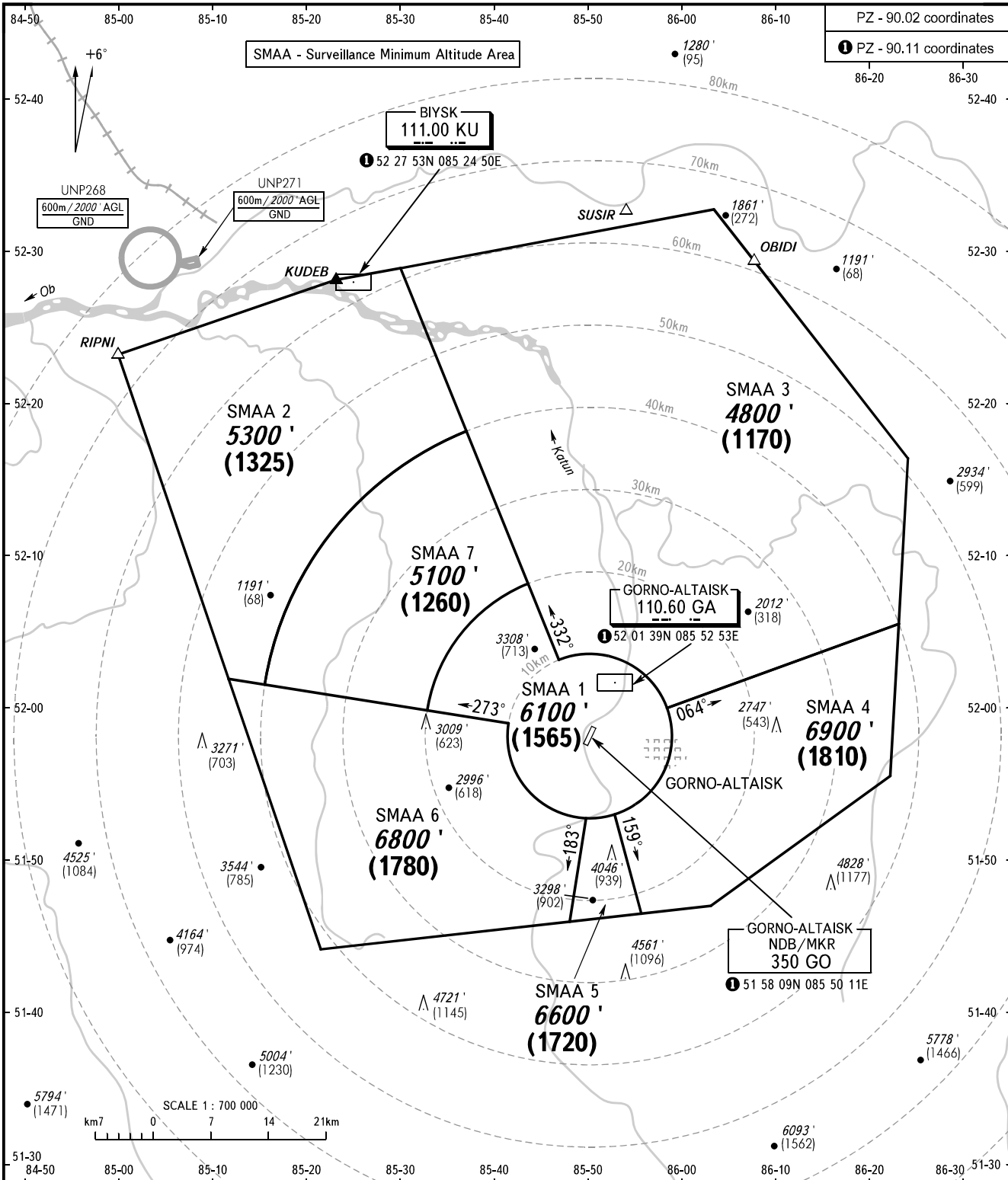
ATC SURVEILLANCE MINIMUM  
ALTITUDE CHART - ICAO

THR 20 ELEV  
966 / 295m

TRANSITION ALT: 8000'  
TRANSITION HGT: (2150)

GORNO-ALTAISK, RUSSIA

GORNO-ALTAISK



DIALIZ VYSHKA 133.000

**WARNING:**

1. The chart may only be used for cross-checking of altitudes assigned while the aircraft is identified under radar control.
  2. When vectoring is carried out under low-temperature conditions, minimum vectoring altitudes for IFR flight must be corrected by altimeter temperature correction.
  3. Minimum sector heights and obstacle heights are referenced to THR 20 ELEV.
  4. BRG and DIST by TAR are indicated from ARP.
- COMMUNICATION FAILURE: In accordance with the procedures described in AIP.

BEARINGS AND TRACKS ARE MAGNETIC  
ALTITUDES IN FEET  
HEIGHTS IN METRES  
ELEVATIONS IN FEET AND METRES  
DISTANCES IN KILOMETRES

Alt set: -QNH(QFE on req);  
-hPa(mm on req).

**GORNO-ALTAISK, RUSSIA**

**GORNO-ALTAISK**

| <b>SURVEILLANCE MINIMUM ALTITUDE AREAS</b> |                                   |   |
|--|-----------------------------------|---|
| <b>IDENT</b>                               | <b>MNM<br/>ALT FT<br/>HGT (M)</b> | <b>LATERAL LIMITS (PZ-90.11 coordinates)</b>  |
| SMAA 1                                     | 6100<br>(1565)                    | 515949.00N 0853256.00E, then clockwise by arc of a circle radius of 20 km centred at 515809.00N 0855011.40E to 520808.80N 0854337.50E, 520309.00N 0854654.80E, then clockwise by arc of a circle radius of 10 km centred at 515809.00N 0855011.40E to 515859.30N 0854133.90E, 515949.00N 0853256.00E.     |
| SMAA 2                                     | 5300<br>(1325)                    | 522300.00N 0845940.00E, 522802.00N 0852258.00E, 522848.80N 0852952.90E, 521808.20N 0853700.60E then anticlockwise by arc of a circle radius of 40 km centred at 515809.00N 0855011.40E to 520126.40N 0851539.30E, 520147.70N 0851148.40E, 522300.00N 0845940.00E.   |
| SMAA 3                                     | 4800<br>(1170)                    | 522848.70N 0852952.90E, 523241.00N 0860333.00E, 522918.00N 0860751.00E, 521617.00N 0862412.00E, 520526.20N 0862305.10E, 515959.20N 0855824.10E then anticlockwise by arc of a circle radius of 10 km centred at 515809.00N 0855011.40E to 520308.90N 0854654.80E, 522848.70N 0852952.90E.                 |
| SMAA 4                                     | 6900<br>(1810)                    | 515959.20N 0855824.10E, 520526.20N 0862305.10E, 515528.00N 0862204.00E, 514659.90N 0860259.90E, 514630.00N 0855538.40E, 515300.70N 0855249.90E then anticlockwise by arc of a circle radius of 10 km centred at 515809.00N 0855011.40E to 515959.20N 0855824.10E.   |
| SMAA 5                                     | 6600<br>(1720)                    | 514558.70N 0854804.80E, 515245.80N 0854947.90E, then anticlockwise by arc of a circle radius of 10 km centred at 515809.00N 0855011.40E to 515300.70N 0855249.90E, 514630.00N 0855538.40E, 514558.70N 0854804.80E.  |
| SMAA 6                                     | 6800<br>(1780)                    | 520147.70N 0851148.50E, 515859.30N 0854133.90E, then anticlockwise by arc of a circle radius of 10 km centred at 515809.00N 0855011.40E to 515245.80N 0854947.90E, 514558.70N 0854804.80E, 514406.00N 0852147.00E, 520147.70N 0851148.50E.  |
| SMAA 7                                     | 5100<br>(1260)                    | 520126.40N 0851539.30E, then clockwise by arc of a circle radius of 40 km centred at 515809.00N 0855011.40E to 521808.20N 0853700.60E, 520808.80N 0854337.50E, then anticlockwise by arc of a circle radius of 20 km centred at 515809.00N 0855011.40E to 515949.00N 0853256.00E, 520126.40N 0851539.30E. |