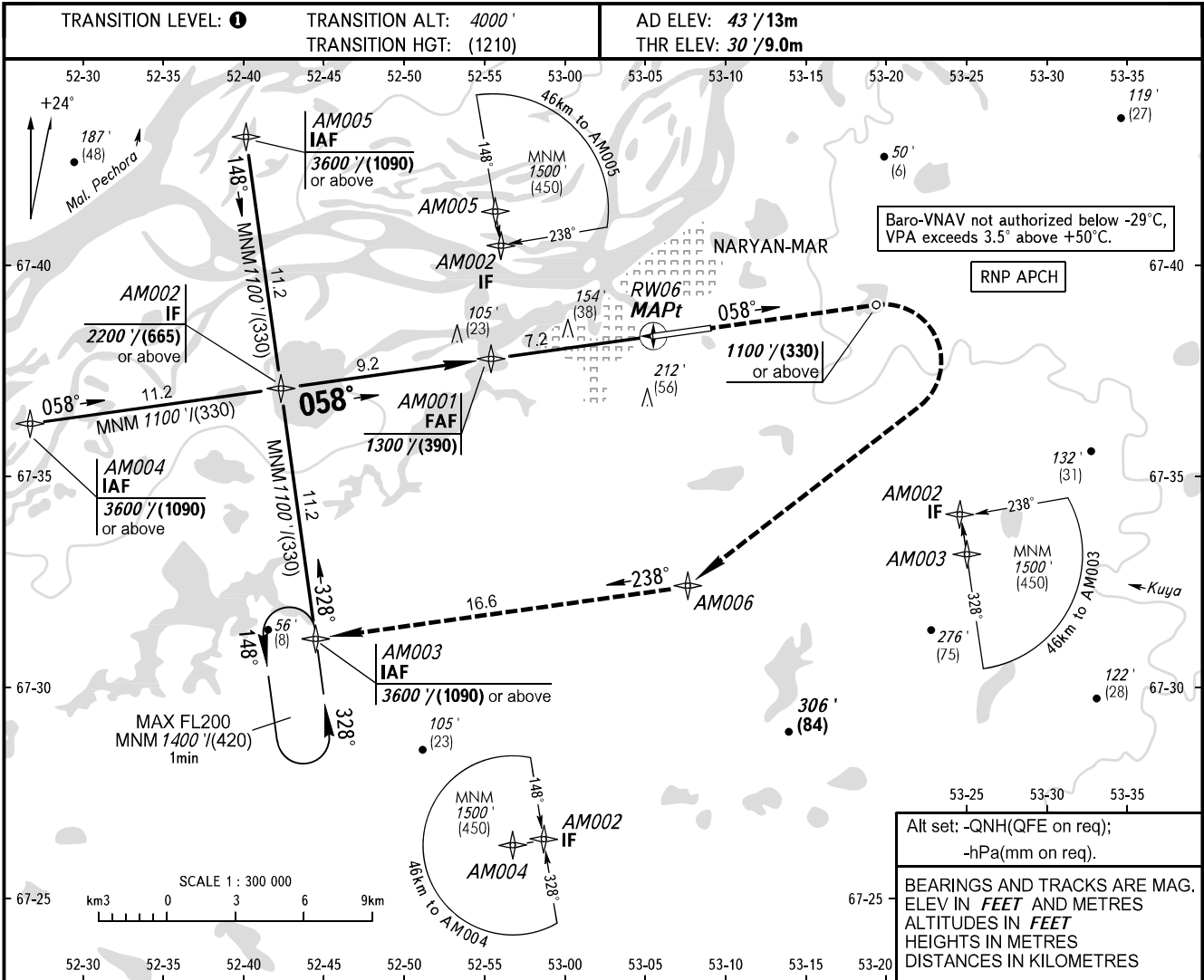


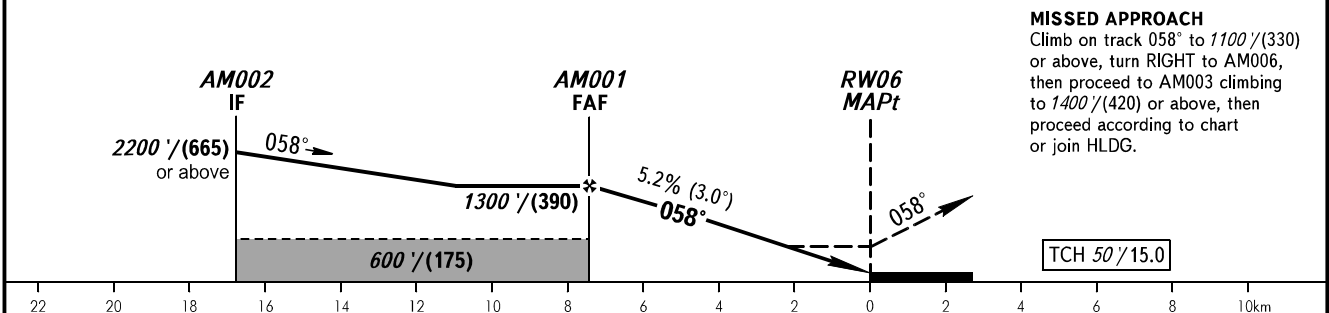
**INSTRUMENT
APPROACH
CHART - ICAO**

PODKHOD	122.000
VYSHKA	127.000

NARYAN-MAR, RUSSIA
NARYAN-MAR
RNP RWY 06



DIST to RW06	6.0	4.0	2.0
ALTITUDE/HEIGHT	1110'/(330)	770'/(230)	430'/(125)



OCA(H)		A	B	C	D								
Straight-in Approach	LNAV	400' (370') (115)	400' (370') (115)	400' (370') (115)	400' (370') (115)								
	LNAV/VNAV	243' (213') (65)	256' (226') (70)	264' (234') (75)	287' (257') (80)								
Circling		510' (470') (145)	540' (500') (155)	640' (600') (185)	740' (700') (215)								
GROUND SPEED		km/h	150	180	210	240	270	300	330	360	390	420	450
RATE OF DESCENT		m/s	2.2	2.6	3.0	3.5	3.9	4.3	4.8	5.2	5.6	6.1	6.5
		ft/min	433	512	591	689	768	847	945	1024	1102	1201	1280

1 TRANSITION LEVEL:
- FL050 when QNH is 1013 hPa (760mm mercury column) or above;
- FL060 when QNH is 977 hPa (733mm mercury column) or above, but less than 1013 hPa (760mm mercury column);
- FL070 when QNH is less than 977 hPa (733mm mercury column).

NOTE
MAPt at RW06. Timing not authorized for defining MAPt.

CHANGE: HGT, Heading