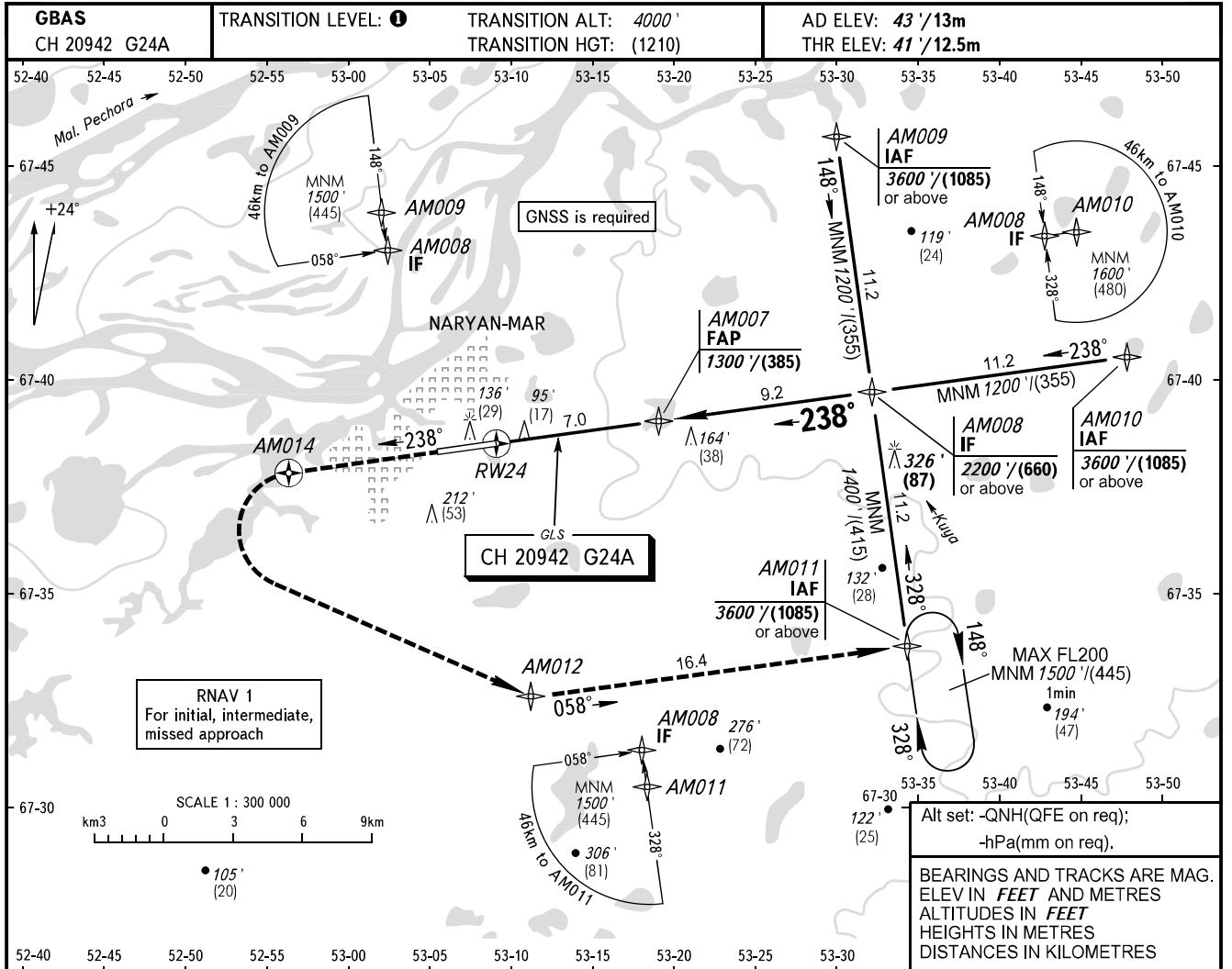


**INSTRUMENT  
APPROACH  
CHART - ICAO**

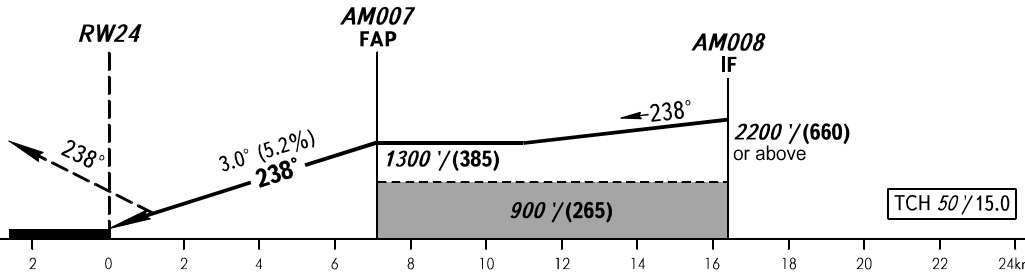
PODKHOD	122.000
VYSHKA	127.000

**NARYAN-MAR, RUSSIA  
NARYAN-MAR, RUSSIA  
GLS RWY 24**



**MISSED APPROACH**

Climb on track 238° to AM014, turn LEFT to AM012, then proceed to AM011 climbing to 1500' / (445) or above, then proceed according to chart or join HLDG.



OCA(H)		A	B	C	D	TRANSITION LEVEL:										
Straight-in Approach		225' (184') (56)	236' (195') (60)	245' (204') (63)	255' (214') (66)	- FL050 when QNH is 1013 hPa (760mm mercury column) or above;										
						- FL060 when QNH is 977 hPa (733mm mercury column) or above, but less than 1013 hPa (760mm mercury column);										
Circling		510' (470') (145)	540' (500') (155)	640' (600') (185)	740' (700') (215)	- FL070 when QNH is less than 977 hPa (733mm mercury column).										
GROUND SPEED		km/h	150	180	210	240	270	300	330	360	390	420	450			
RATE OF DESCENT		m/s	2.2	2.6	3.0	3.5	3.9	4.3	4.8	5.2	5.6	6.1	6.5			
		ft/min	433	512	591	689	768	847	945	1024	1102	1201	1280			