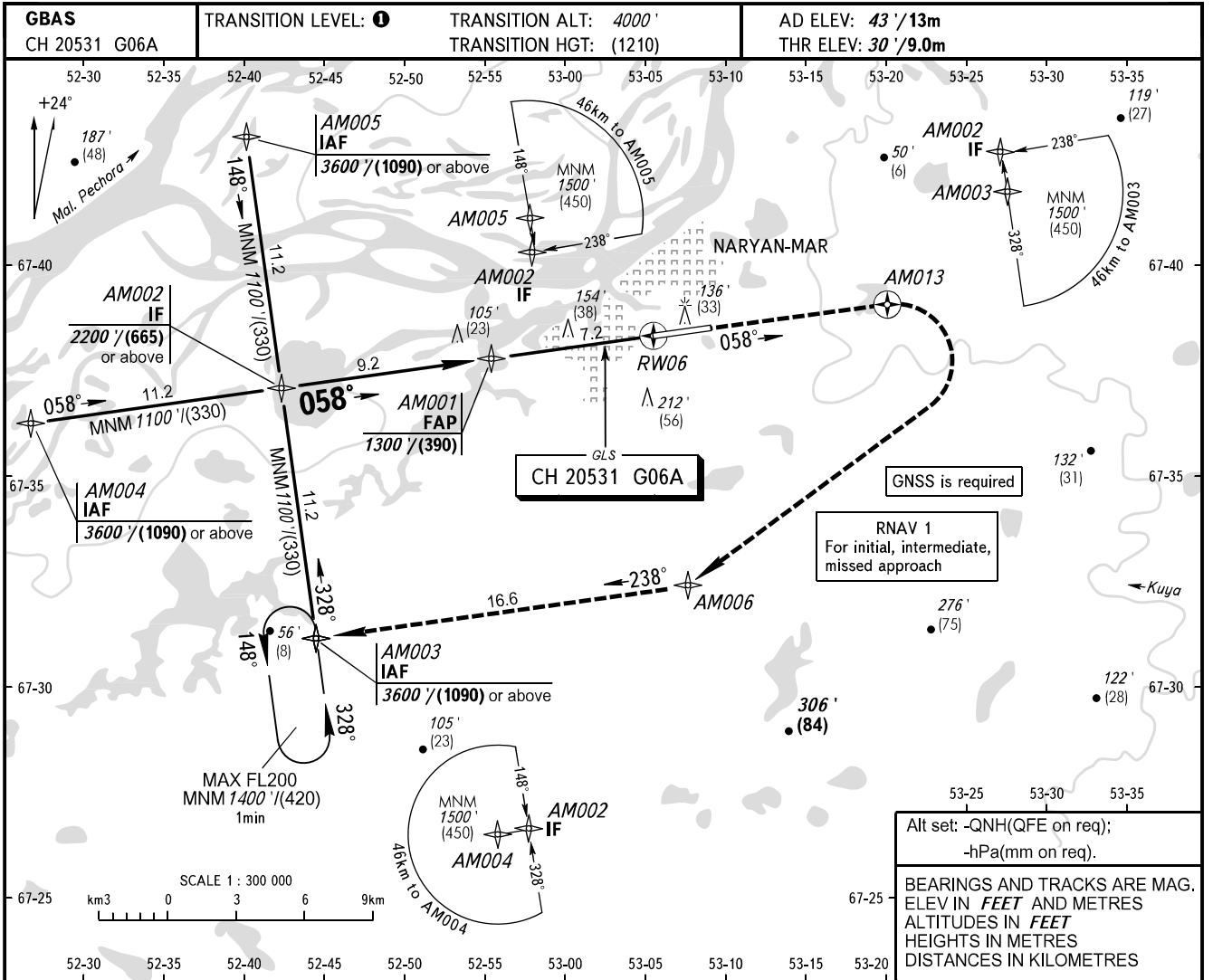


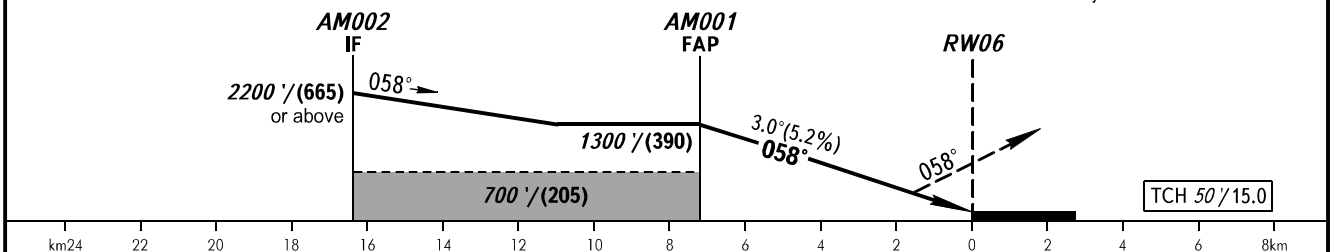
**INSTRUMENT  
APPROACH  
CHART - ICAO**

PODKHOD	122.000
VYSHKA	127.000

**NARYAN-MAR, RUSSIA**  
NARYAN-MAR  
GLS RWY 06



**MISSED APPROACH**  
Climb on track 058° to AM013, turn RIGHT to AM006, then proceed to AM003 climbing to 1400' / (420) or above, then proceed according to chart or join HLDG.



OCA(H)	A	B	C	D								
Straight-in Approach	204' (174') (53)	216' (186') (57)	225' (195') (60)	235' (205') (63)								
Circling	510' (470') (145)	540' (500') (155)	640' (600') (185)	740' (700') (215)								
GROUND SPEED	km/h	150	180	210	240	270	300	330	360	390	420	450
RATE OF DESCENT	m/s	2.2	2.6	3.0	3.5	3.9	4.3	4.8	5.2	5.6	6.1	6.5
	ft / min	433	512	591	689	768	847	945	1024	1102	1201	1280

① TRANSITION LEVEL:  
- FL050 when QNH is 1013 hPa (760mm mercury column) or above;  
- FL060 when QNH is 977 hPa (733mm mercury column) or above, but less than 1013 hPa (760mm mercury column);  
- FL070 when QNH is less than 977 hPa (733mm mercury column).