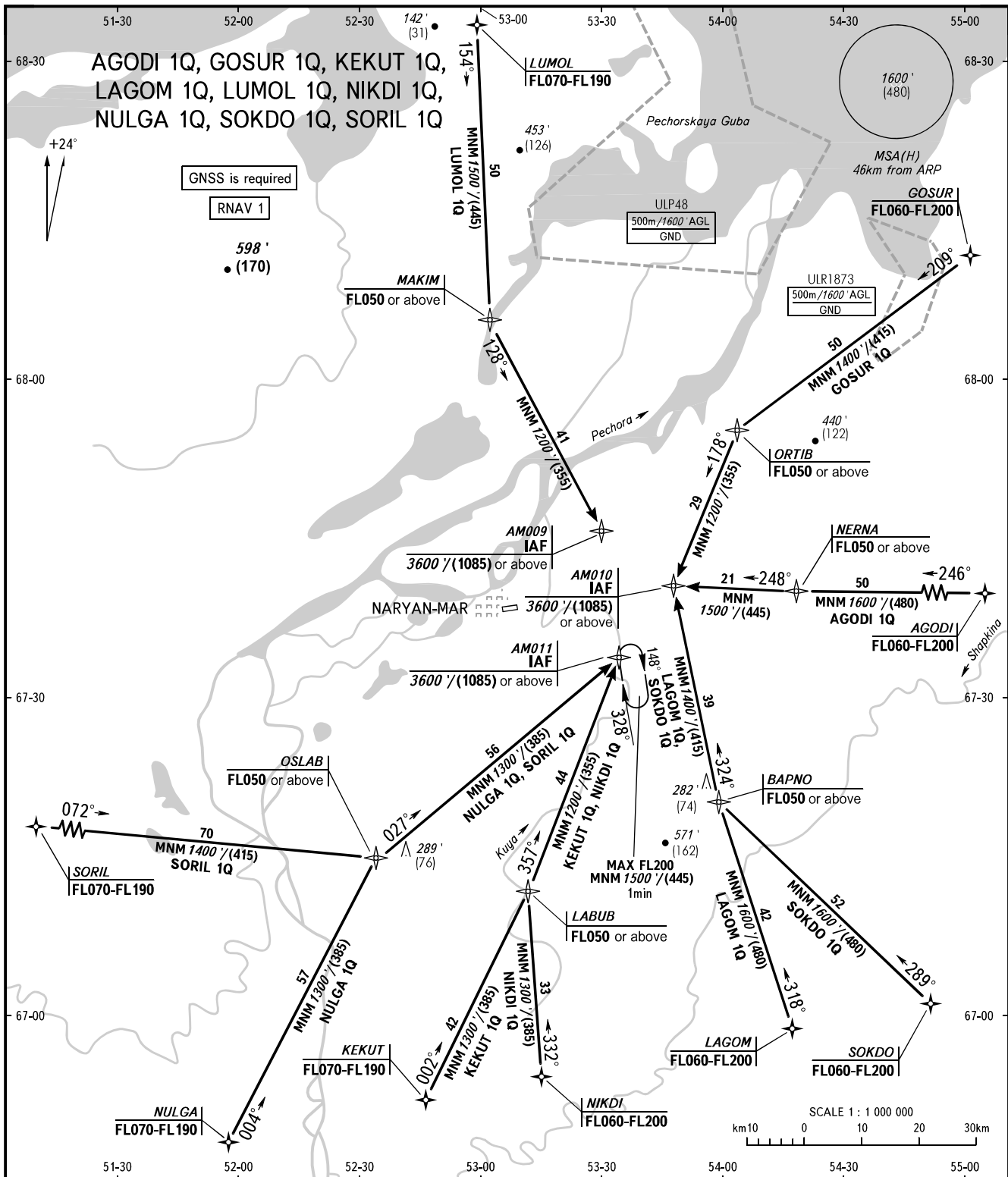


STANDARD ARRIVAL CHART  
INSTRUMENT (STAR) - ICAO

NARYAN-MAR, RUSSIA  
NARYAN-MAR  
RNAV RWY 24

TRANSITION  
LEVEL: 1



PODKHOD 122.000  
VYSHKA 127.000

1 TRANSITION LEVEL:  
- FL050 when QNH is 1013 hPa (760mm mercury column) or above;  
- FL060 when QNH is 977 hPa (733mm mercury column) or above,  
but less than 1013 hPa (760mm mercury column);  
- FL070 when QNH is less than 977 hPa (733mm mercury column).

BEARINGS AND TRACKS ARE MAGNETIC  
ELEVATIONS IN FEET AND METRES  
ALTITUDES IN FEET  
HEIGHTS IN METRES  
DISTANCES IN KILOMETRES

Alt set: -QNH(QFE on req);  
-hPa(mm on req).