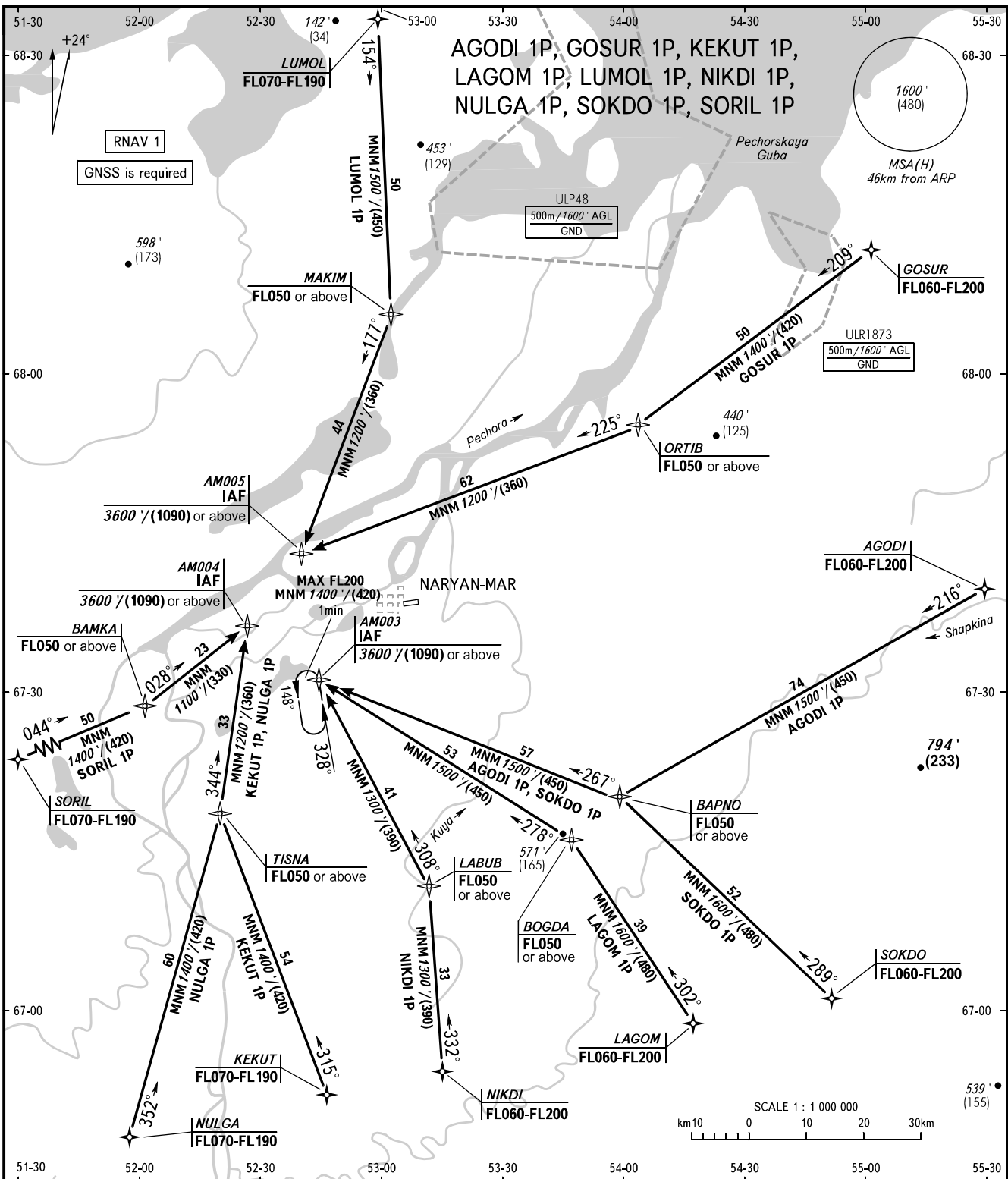


STANDARD ARRIVAL CHART
INSTRUMENT (STAR) - ICAO

NARYAN-MAR, RUSSIA
NARYAN-MAR
RNAV RWY 06

TRANSITION
LEVEL: 1



PODKHOD 122.000
VYSHKA 127.000

- 1 TRANSITION LEVEL:
- FL050 when QNH is 1013 hPa (760mm mercury column) or above;
 - FL060 when QNH is 977 hPa (733mm mercury column); but less than 1013 hPa (760mm mercury column);
 - FL070 when QNH is less than 977 hPa (733mm mercury column).

BEARINGS AND TRACKS ARE MAGNETIC	Alt set: -QNH(QFE on req);
ELEVATIONS IN FEET AND METRES	-hPa(mm on req).
ALTITUDES IN FEET	
HEIGHTS IN METRES	
DISTANCES IN KILOMETRES	

CHANGE: New chart