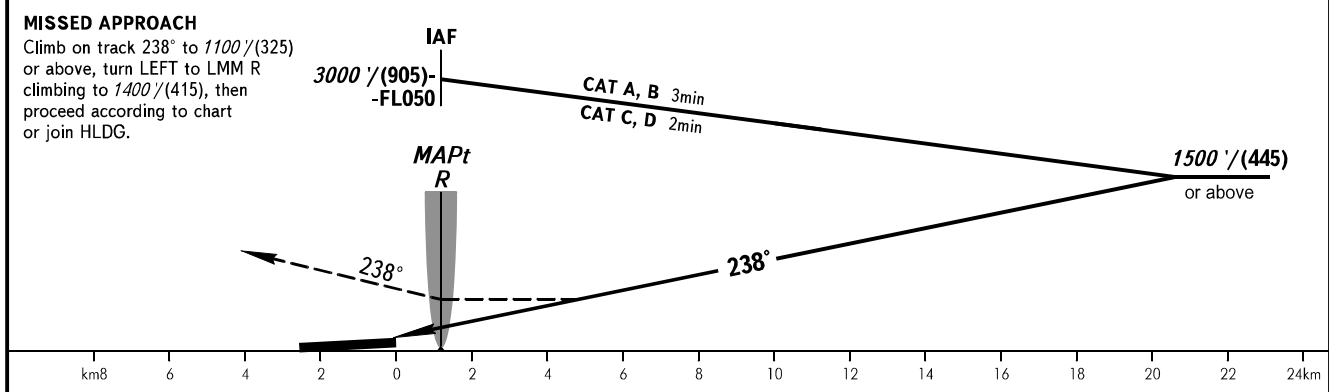
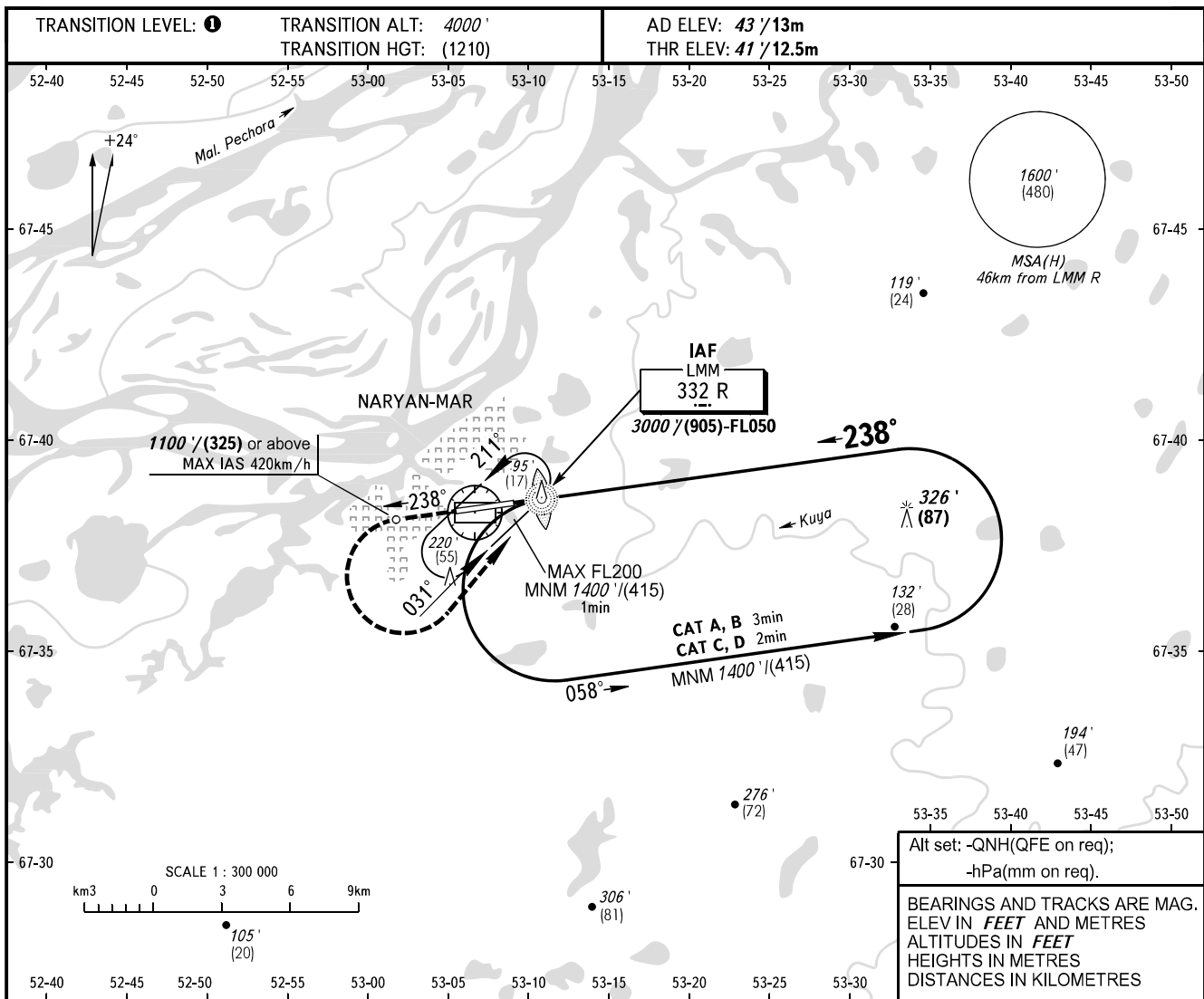


**INSTRUMENT
APPROACH
CHART - ICAO**

PODKHOD	122.000
VYSHKA	127.000

NARYAN-MAR, RUSSIA
NARYAN-MAR
NDB V RWY 24



OCA(H)		A	B	C	D
Straight-in Approach		540' (500') (155)	540' (500') (155)	540' (500') (155)	540' (500') (155)
Circling		540' (500') (155)	540' (500') (155)	640' (600') (185)	740' (700') (215)

1 TRANSITION LEVEL:
- FL050 when QNH is 1013 hPa (760mm mercury column) or above;
- FL060 when QNH is 977 hPa (733mm mercury column) or above, but less than 1013 hPa (760mm mercury column);
- FL070 when QNH is less than 977 hPa (733mm mercury column).

NOTE
Turn before MAPt is PROHIBITED.
MAPt at LMM R. Timing not authorized for defining MAPt.

CHANGE: HGT, Heading