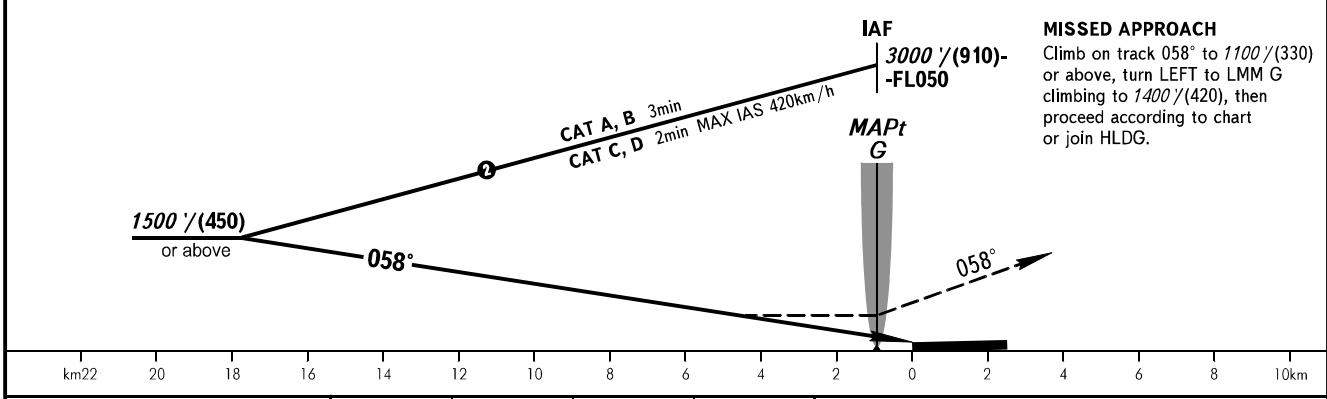
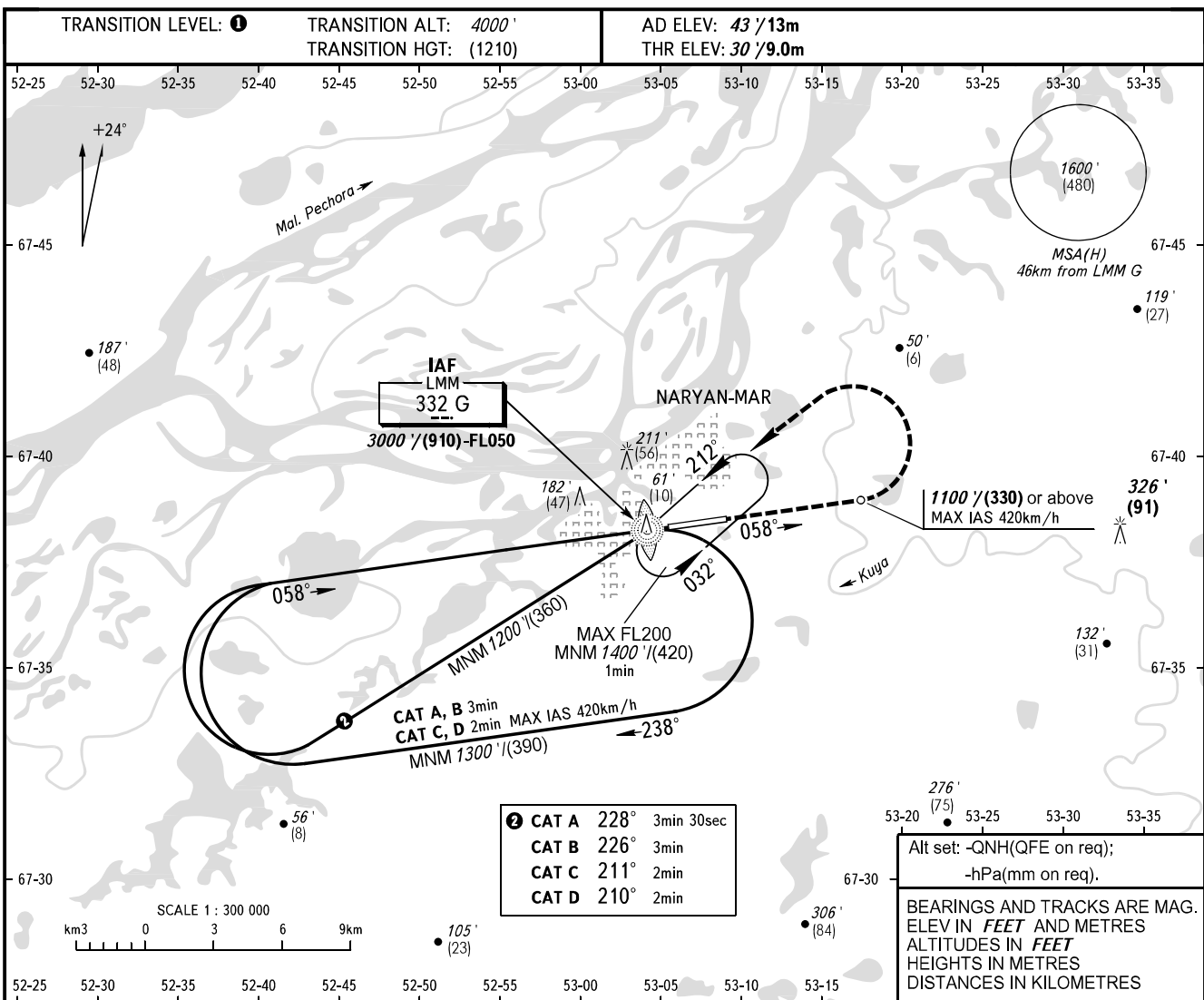


**INSTRUMENT
APPROACH
CHART - ICAO**

PODKHOD	122.000
VYSHKA	127.000

NARYAN-MAR, RUSSIA
NARYAN-MAR
NDB V RWY 06



OCA(H)		A	B	C	D
Straight-in Approach		470' (440') (135)	470' (440') (135)	470' (440') (135)	470' (440') (135)
Circling		510' (470') (145)	540' (500') (155)	640' (600') (185)	740' (700') (215)

① TRANSITION LEVEL:
 - FL050 when QNH is 1013 hPa (760mm mercury column) or above;
 - FL060 when QNH is 977 hPa (733mm mercury column) or above, but less than 1013 hPa (760mm mercury column);
 - FL070 when QNH is less than 977 hPa (733mm mercury column).

NOTE
 Turn before MAPt is PROHIBITED.
 MAPt at LMM G. Timing not authorized for defining MAPt.

CHANGE: HGT, Heading