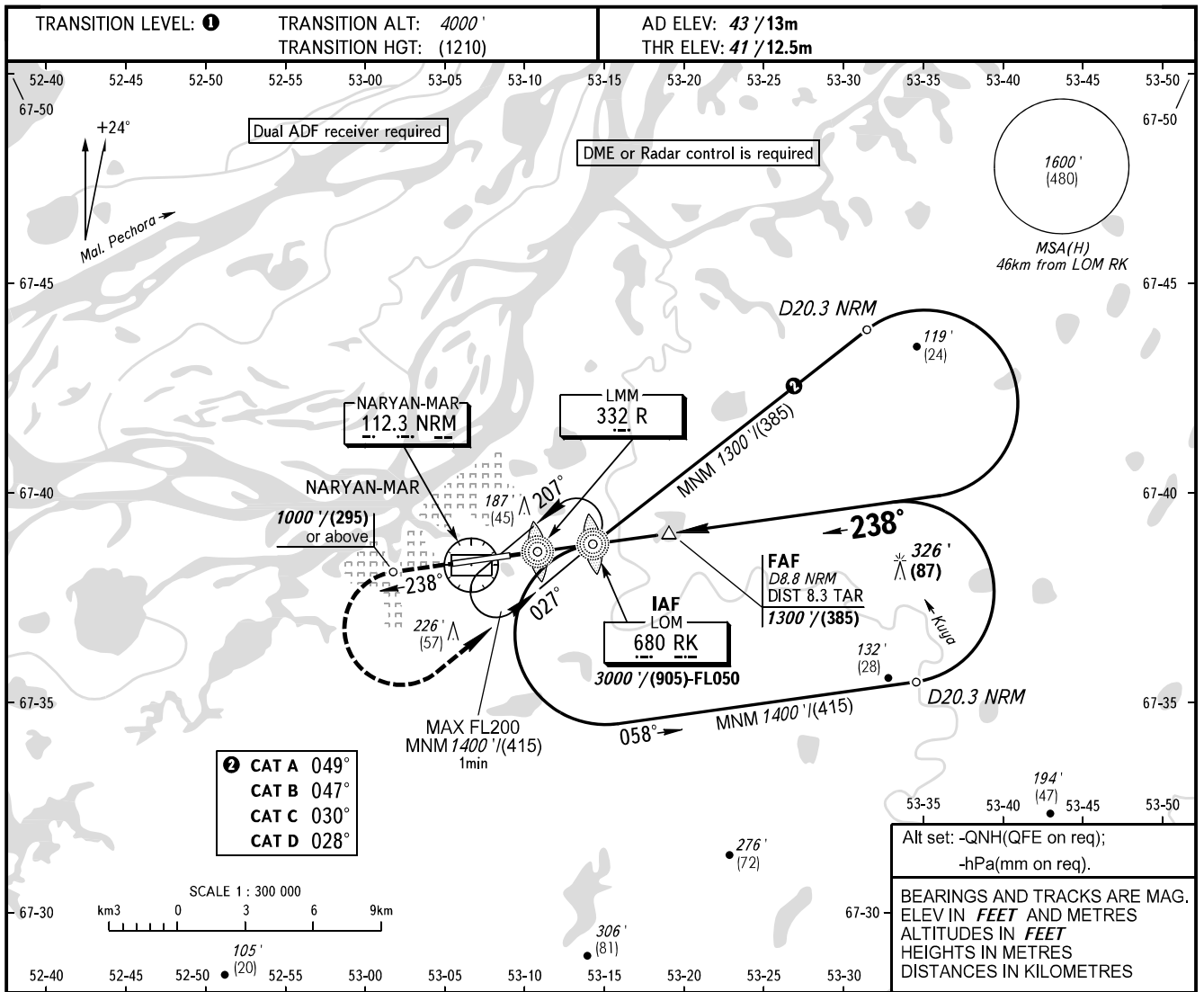


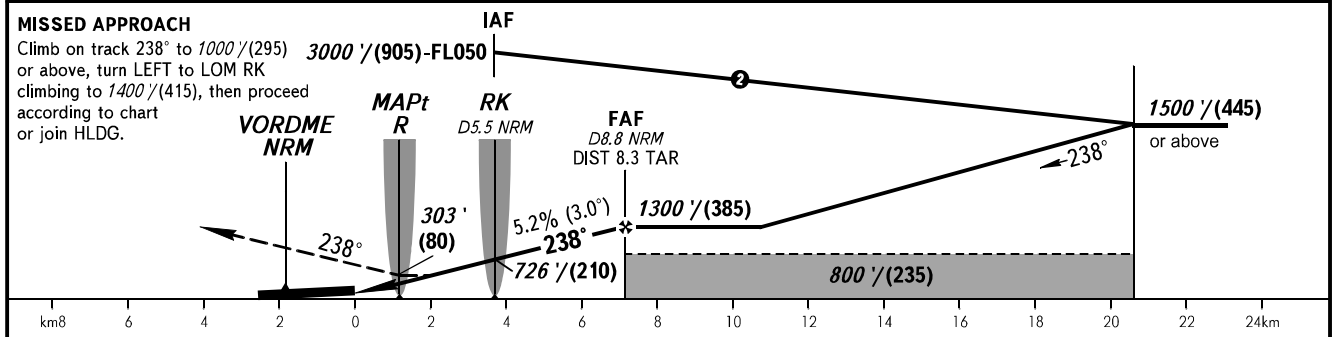
**INSTRUMENT  
APPROACH  
CHART - ICAO**

PODKHOD 122.000  
VYSHKA 127.000

**NARYAN-MAR, RUSSIA**  
NARYAN-MAR  
2 NDB Z RWY 24



DME NRM	4.0	6.0	8.0
ALTITUDE/HEIGHT	480'/(135)	830'/(245)	1170'/(345)



OCA(H)		A	B	C	D								
Straight-in Approach	1000' (295) or above	390' (350) (110)	390' (350) (110)	390' (350) (110)	390' (350) (110)								
	800' (235)												
Circling		510' (470') (145)	540' (500') (155)	640' (600') (185)	740' (700') (215)								
GROUND SPEED		km/h	150	180	210	240	270	300	330	360	390	420	450
RATE OF DESCENT		m/s	2.2	2.6	3.0	3.5	3.9	4.3	4.8	5.2	5.6	6.1	6.5
		ft/min	433	512	591	689	768	847	945	1024	1102	1201	1280

**1** TRANSITION LEVEL:  
- FL050 when QNH is 1013 hPa (760mm mercury column) or above;  
- FL060 when QNH is 977 hPa (733mm mercury column) or above, but less than 1013 hPa (760mm mercury column);  
- FL070 when QNH is less than 977 hPa (733mm mercury column).  
**NOTE**  
MAPt at LMM R. Timing not authorized for defining MAPt.

CHANGE: HGT, Heading