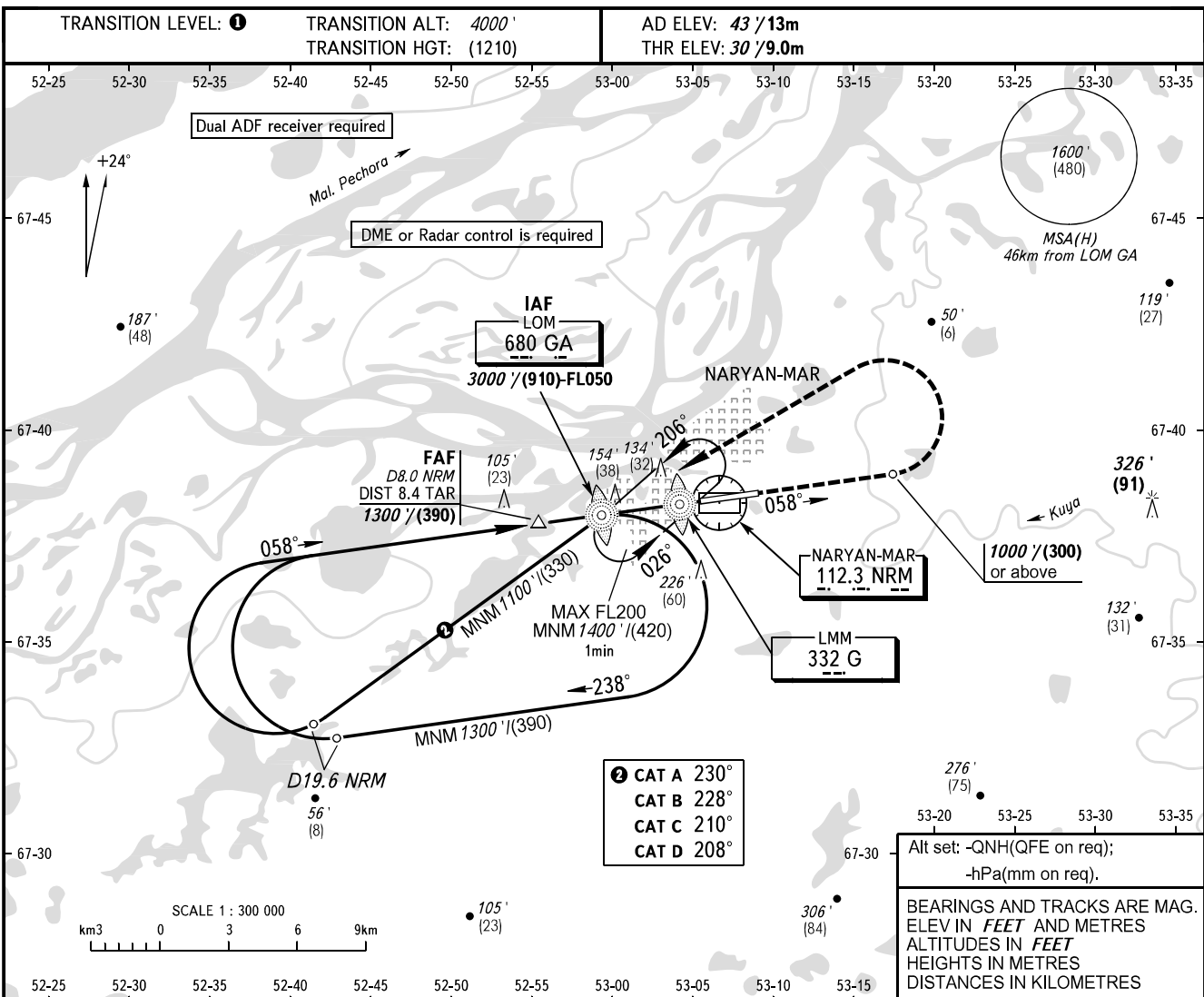


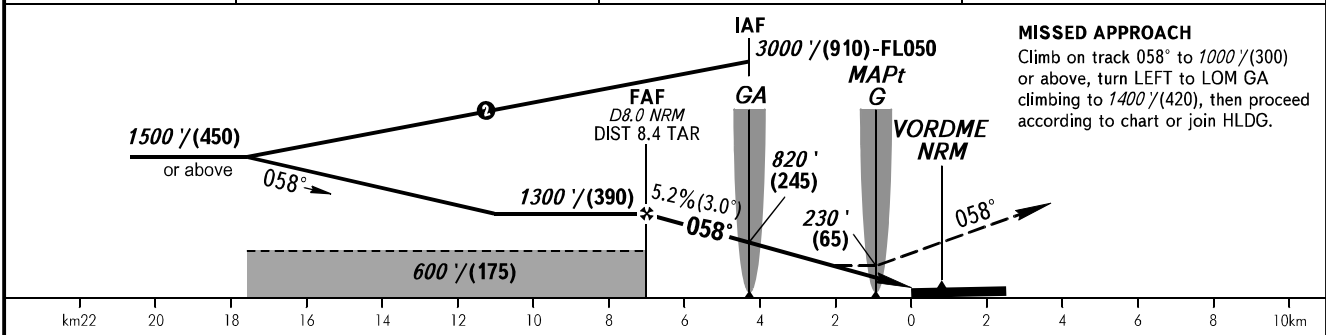
**INSTRUMENT
APPROACH
CHART - ICAO**

PODKHOD **122.000**
VYSHKA **127.000**

NARYAN-MAR, RUSSIA
NARYAN-MAR
2 NDB Z RWY 06



DME NRM	7.0	5.0	3.0
ALTITUDE/HEIGHT	1150'/(345)	800'/(235)	460'/(135)



OCA(H)		A	B	C	D	① TRANSITION LEVEL:									
Straight-in Approach		400' (370') (115)	400' (370') (115)	400' (370') (115)	400' (370') (115)	- FL050 when QNH is 1013 hPa (760mm mercury column) or above;									
						- FL060 when QNH is 977 hPa (733mm mercury column) or above, but less than 1013 hPa (760mm mercury column);									
Circling		510' (470') (145)	540' (500') (155)	640' (600') (185)	740' (700') (215)	- FL070 when QNH is less than 977 hPa (733mm mercury column).									
						NOTE MAPt at LMM G. Timing not authorized for defining MAPt.									
GROUND SPEED		km/h	150	180	210	240	270	300	330	360	390	420	450		
RATE OF DESCENT		m/s	2.2	2.6	3.0	3.5	3.9	4.3	4.8	5.2	5.6	6.1	6.5		
		ft/min	433	512	591	689	768	847	945	1024	1102	1201	1280		

CHANGE: HGT, Heading