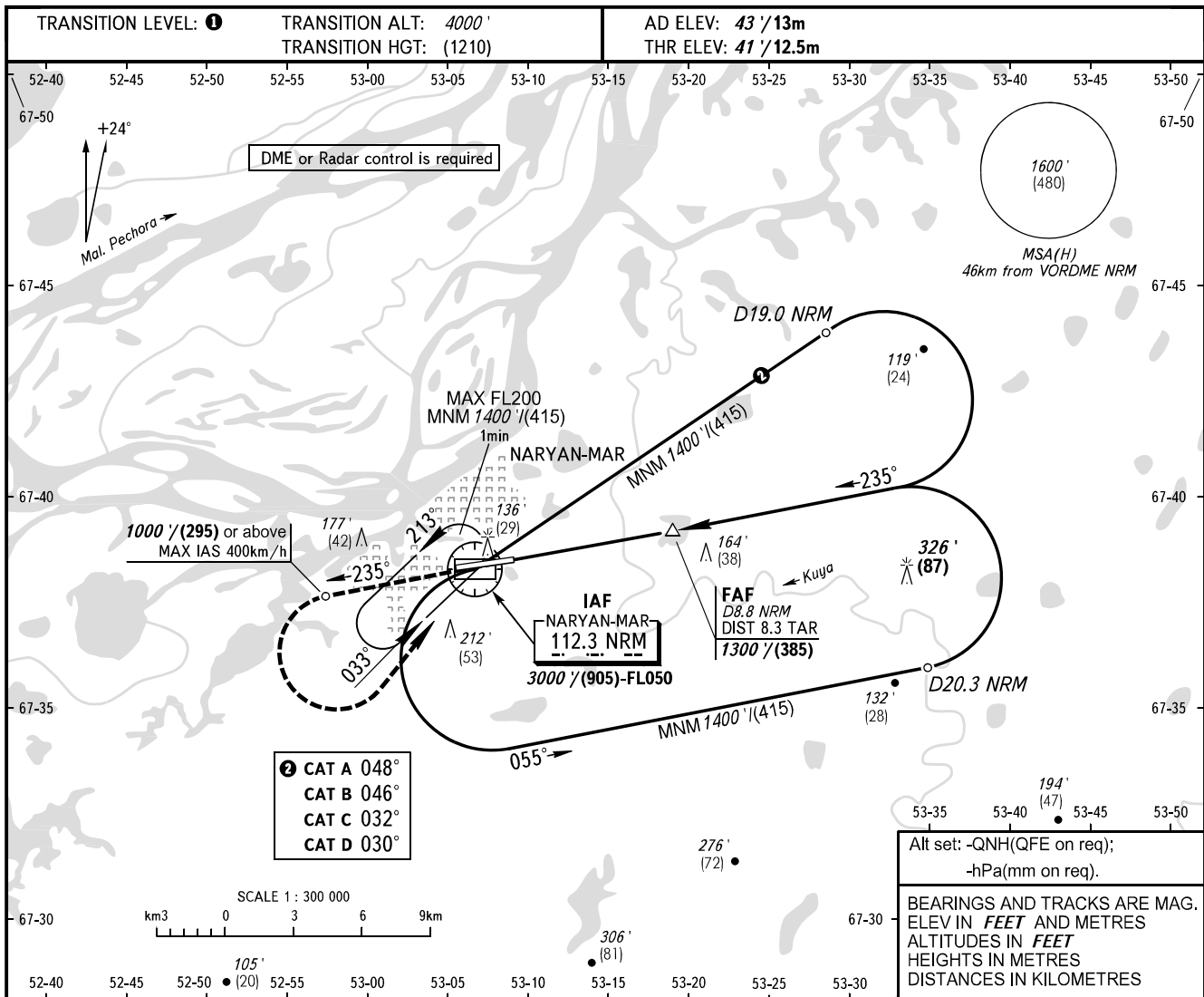


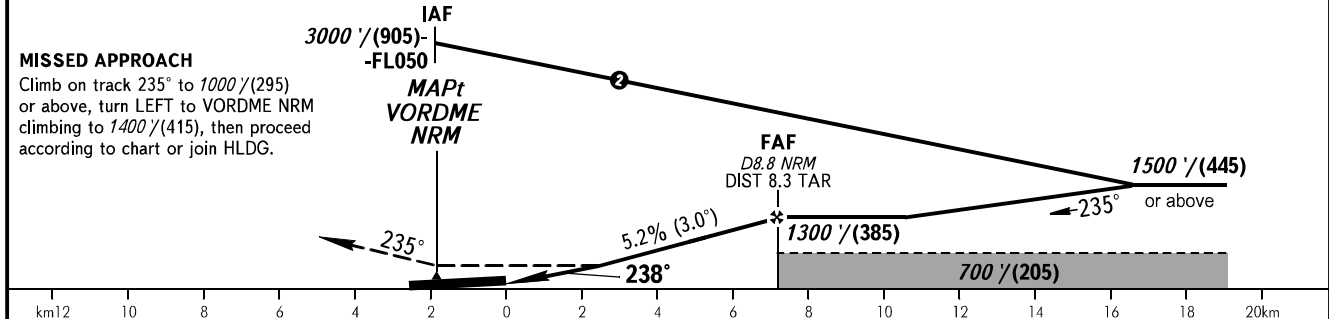
**INSTRUMENT
APPROACH
CHART - ICAO**

PODKHOD **122.000**
VYSHKA **127.000**

NARYAN-MAR, RUSSIA
NARYAN-MAR
VOR Z RWY 24



DME NRM	4.0	6.0	8.0
ALTITUDE/HEIGHT	480' (135)	830' (245)	1170' (345)



OCA(H)		A	B	C	D								
Straight-in Approach		390' (350) (110)	390' (350) (110)	390' (350) (110)	390' (350) (110)								
Circling		510' (470') (145)	540' (500') (155)	640' (600') (185)	740' (700') (215)								
GROUND SPEED		km/h	150	180	210	240	270	300	330	360	390	420	450
RATE OF DESCENT		m/s	2.2	2.6	3.0	3.5	3.9	4.3	4.8	5.2	5.6	6.1	6.5
		ft/min	433	512	591	689	768	847	945	1024	1102	1201	1280

1 TRANSITION LEVEL:
- FL050 when QNH is 1013 hPa (760mm mercury column) or above;
- FL060 when QNH is 977 hPa (733mm mercury column) or above, but less than 1013 hPa (760mm mercury column);
- FL070 when QNH is less than 977 hPa (733mm mercury column).

NOTE
MAPt at VORDME NRM. Timing not authorized for defining MAPt.
Final approach track is offset by 3° from the runway centre line.

CHANGE: HGT, Heading