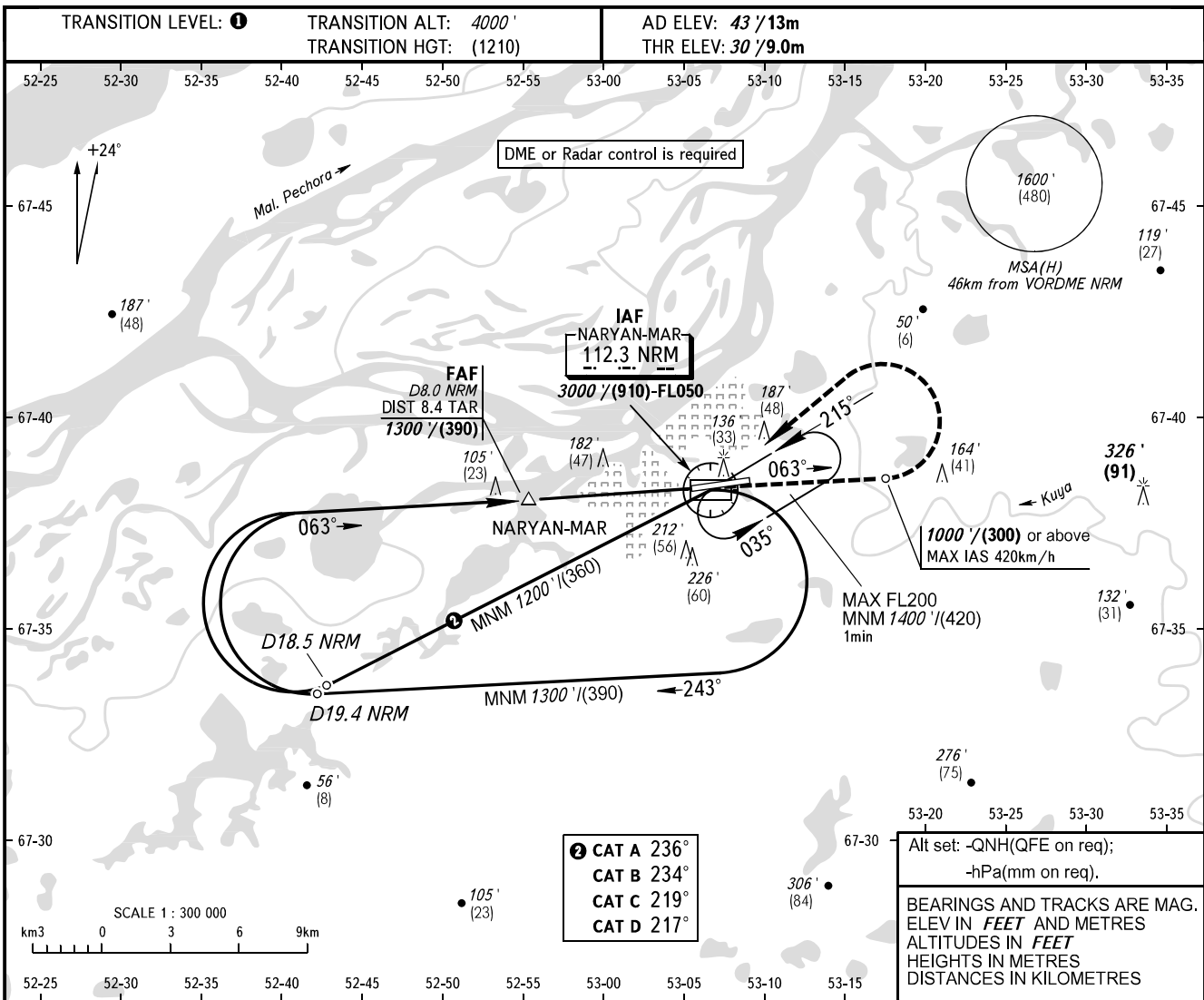


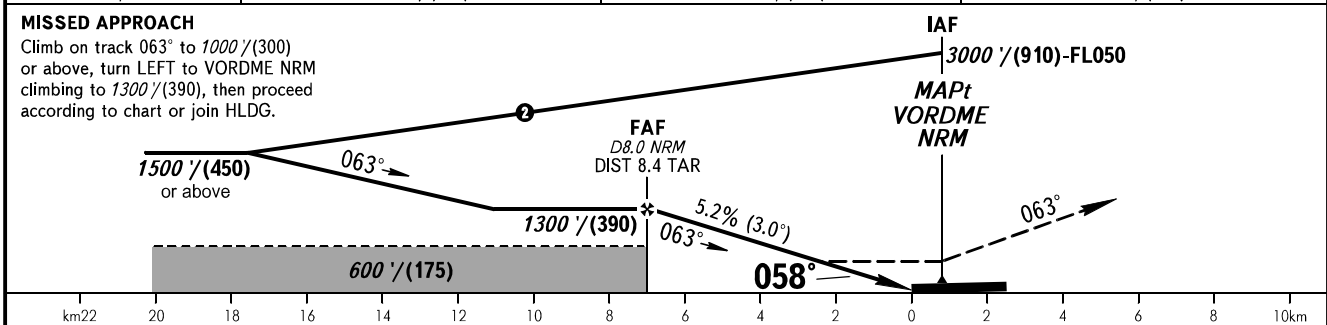
**INSTRUMENT
APPROACH
CHART - ICAO**

PODKHOD	122.000
VYSHKA	127.000

NARYAN-MAR, RUSSIA
NARYAN-MAR
VOR Z RWY 06



DME NRM	7.0	5.0	3.0
ALTITUDE/HEIGHT	1150'/(345)	800'/(235)	460'/(135)



OCA(H)		A	B	C	D	1 TRANSITION LEVEL: - FL050 when QNH is 1013 hPa (760mm mercury column) or above; - FL060 when QNH is 977 hPa (733mm mercury column) or above, but less than 1013 hPa (760mm mercury column); - FL070 when QNH is less than 977 hPa (733mm mercury column). NOTE MAPt at VORDME NRM. Timing not authorized for defining MAPt. Final approach track is offset by 5° from the runway centre line.						
Straight-in Approach		425' (395') (120)	425' (395') (120)	425' (395') (120)	425' (395') (120)							
	Circling	510' (470') (145)	540' (500') (155)	640' (600') (185)	740' (700') (215)							
GROUND SPEED	km/h	150	180	210	240	270	300	330	360	390	420	450
RATE OF DESCENT	m/s	2.2	2.6	3.0	3.5	3.9	4.3	4.8	5.2	5.6	6.1	6.5
	ft/min	433	512	591	689	768	847	945	1024	1102	1201	1280