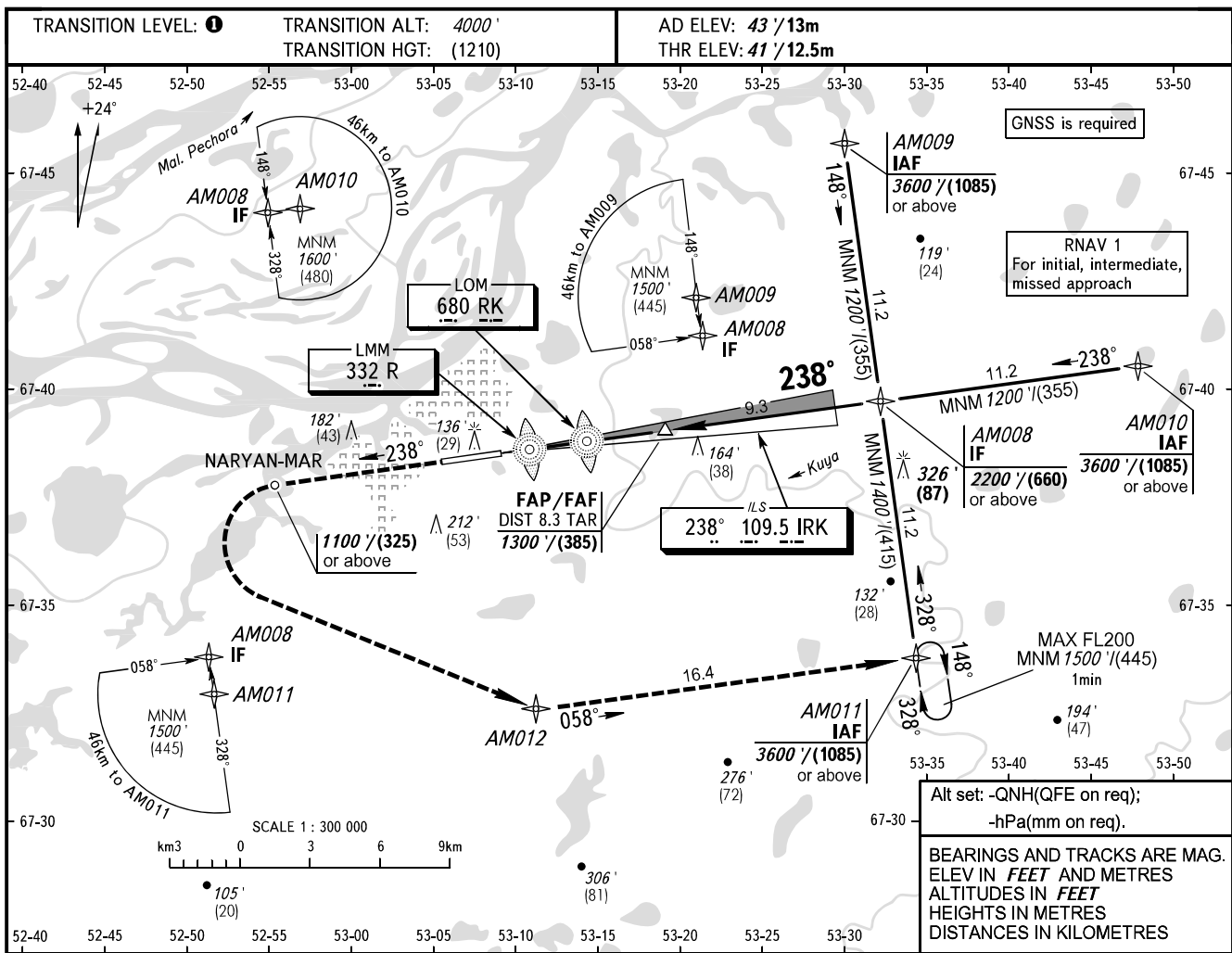


**INSTRUMENT  
APPROACH  
CHART - ICAO**

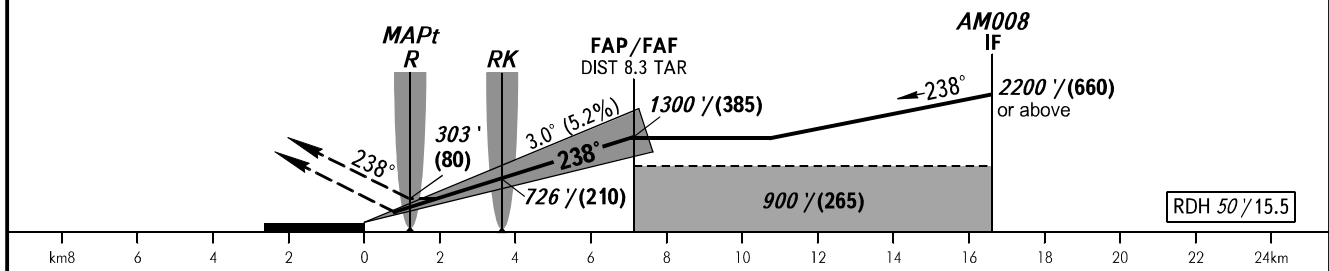
PODKHOD	122.000
VYSHKA	127.000

**NARYAN-MAR, RUSSIA**  
NARYAN-MAR  
ILS W, LOC W RWY 24



**MISSED APPROACH**

Climb on track 238° to 1100'/(325) or above, turn LEFT to AM012, then proceed to AM011 climbing to 1500'/(445), then proceed according to chart or join HLDG.



OCA(H)		A	B	C	D								
Straight-in Approach		225' (184') (56)	236' (195') (60)	245' (204') (63)	255' (214') (66)								
	LOC	340' (300') (95)	340' (300') (95)	340' (300') (95)	340' (300') (95)								
Circling		510' (470') (145)	540' (500') (155)	640' (600') (185)	740' (700') (215)								
GROUND SPEED		km/h	150	180	210	240	270	300	330	360	390	420	450
RATE OF DESCENT		m/s	2.2	2.6	3.0	3.5	3.9	4.3	4.8	5.2	5.6	6.1	6.5
		ft/min	433	512	591	689	768	847	945	1024	1102	1201	1280

**TRANSITION LEVEL:**  
 - FL050 when QNH is 1013 hPa (760mm mercury column) or above;  
 - FL060 when QNH is 977 hPa (733mm mercury column) or above, but less than 1013 hPa (760mm mercury column);  
 - FL070 when QNH is less than 977 hPa (733mm mercury column).