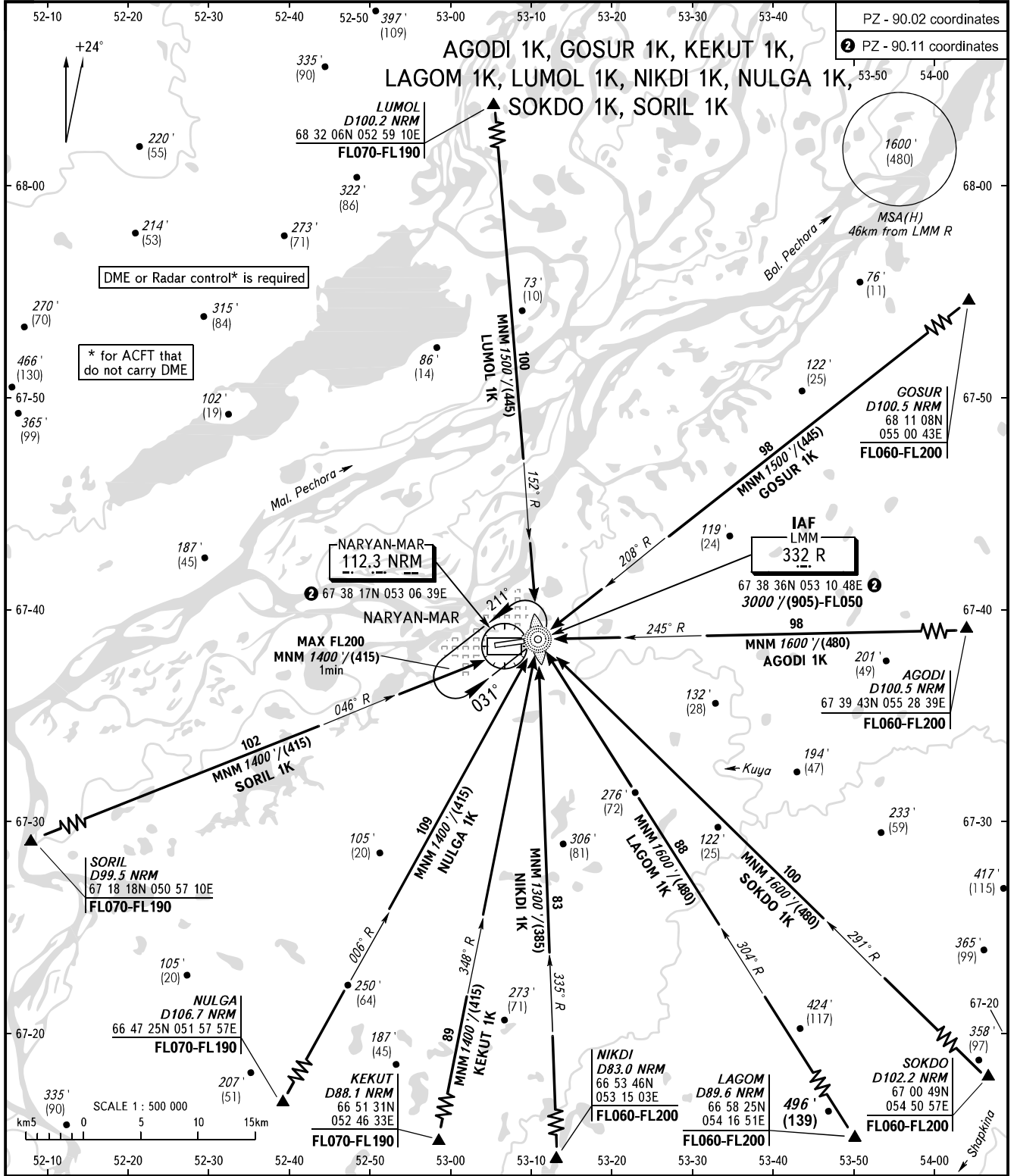


NARYAN-MAR, RUSSIA
NARYAN-MAR
RWY 24

**STANDARD ARRIVAL CHART
INSTRUMENT (STAR) - ICAO**

TRANSITION
LEVEL: ①



- ① TRANSITION LEVEL:
- FL050 when QNH is 1013 hPa (760mm mercury column) or above;
 - FL060 when QNH is 977 hPa (733mm mercury column) or above, but less than 1013 hPa (760mm mercury column);
 - FL070 when QNH is less than 977 hPa (733mm mercury column).

BEARINGS AND TRACKS ARE MAGNETIC
ELEVATIONS IN FEET AND METRES
ALTITUDES IN FEET
HEIGHTS IN METRES
DISTANCES IN KILOMETRES

Alt set: -QNH(QFE on req);
-hPa(mm on req).