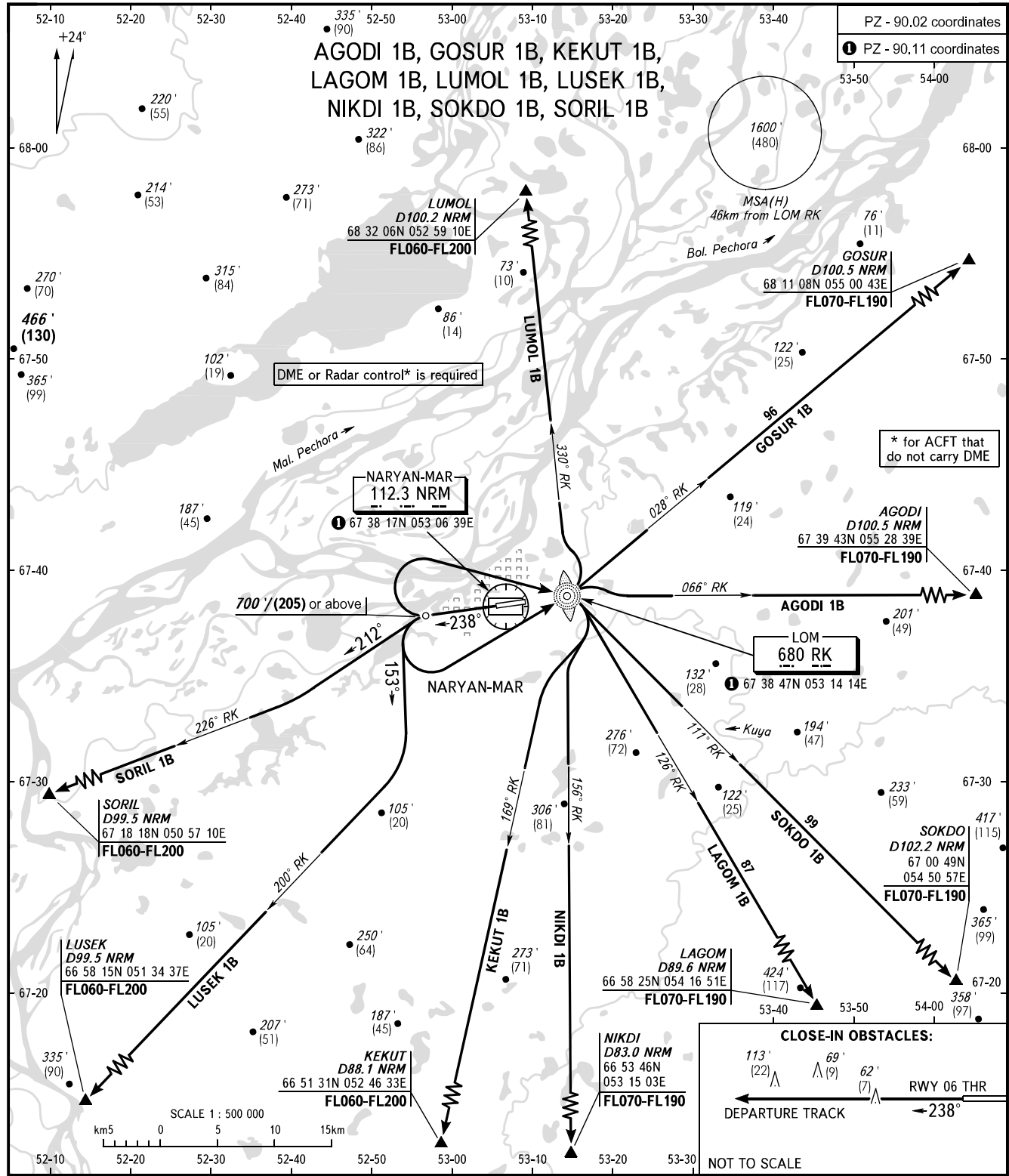


**NARYAN-MAR, RUSSIA**  
NARYAN-MAR  
RWY 24

**STANDARD DEPARTURE CHART  
INSTRUMENT (SID) - ICAO**

TRANSITION ALT: **4000'**  
TRANSITION HGT: **(1210)**



PODKHOD VYSHKA	122.000 127.000	<p><b>WARNING</b> AGODI 1B, GOSUR 1B, KEKUT 1B, LAGOM 1B, LUMOL 1B, NIKDI 1B, SOKDO 1B - turn before DER is PROHIBITED.</p>
BEARINGS AND TRACKS ARE MAGNETIC ELEVATIONS IN FEET AND METRES ALTITUDES IN FEET HEIGHTS IN METRES DISTANCES IN KILOMETRES	Alt set: -QNH(QFE on req); -hPa(mm on req).	NOT TO SCALE

CHANGE: Heading, HGT