

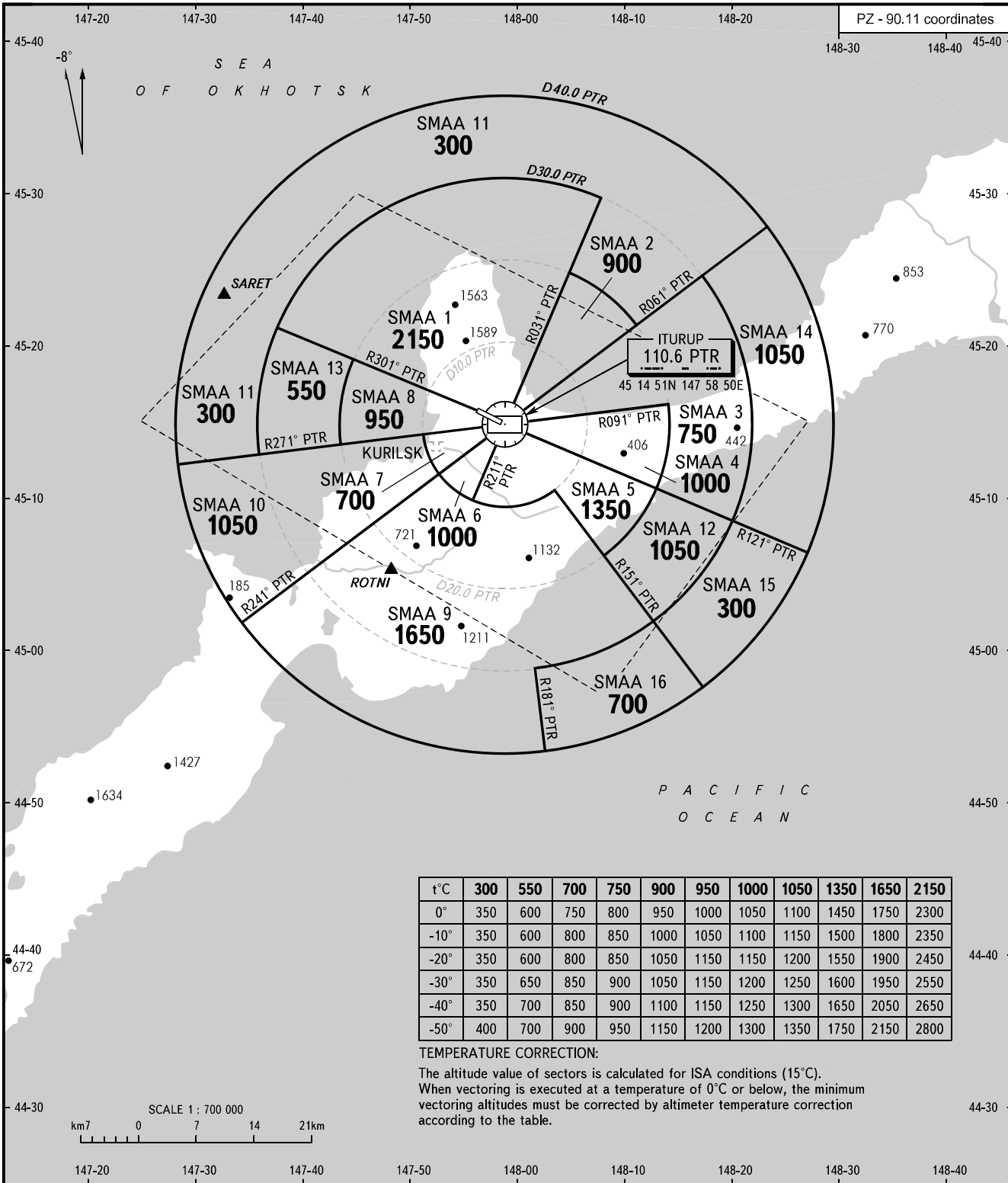
ATC SURVEILLANCE MINIMUM
ALTITUDE CHART - ICAO

ELEV
118m

TRANSITION
HEIGHT : (2100)

ITURUP, RUSSIA

ITURUP



VYSHKA **127.700**

- WARNING:**
1. The chart may only be used for cross-checking of altitudes assigned by ATS unit.
 2. Surveillance Minimum Altitude Area (SMAA) - is an area where the minimum safe altitude is specified by ATS unit for IFR flights (for the purpose of vectoring).

BEARINGS AND TRACKS ARE MAGNETIC
ALTITUDES, HEIGHTS AND ELEVATIONS IN METRES
DISTANCES IN KILOMETRES

CHANGE: New chart