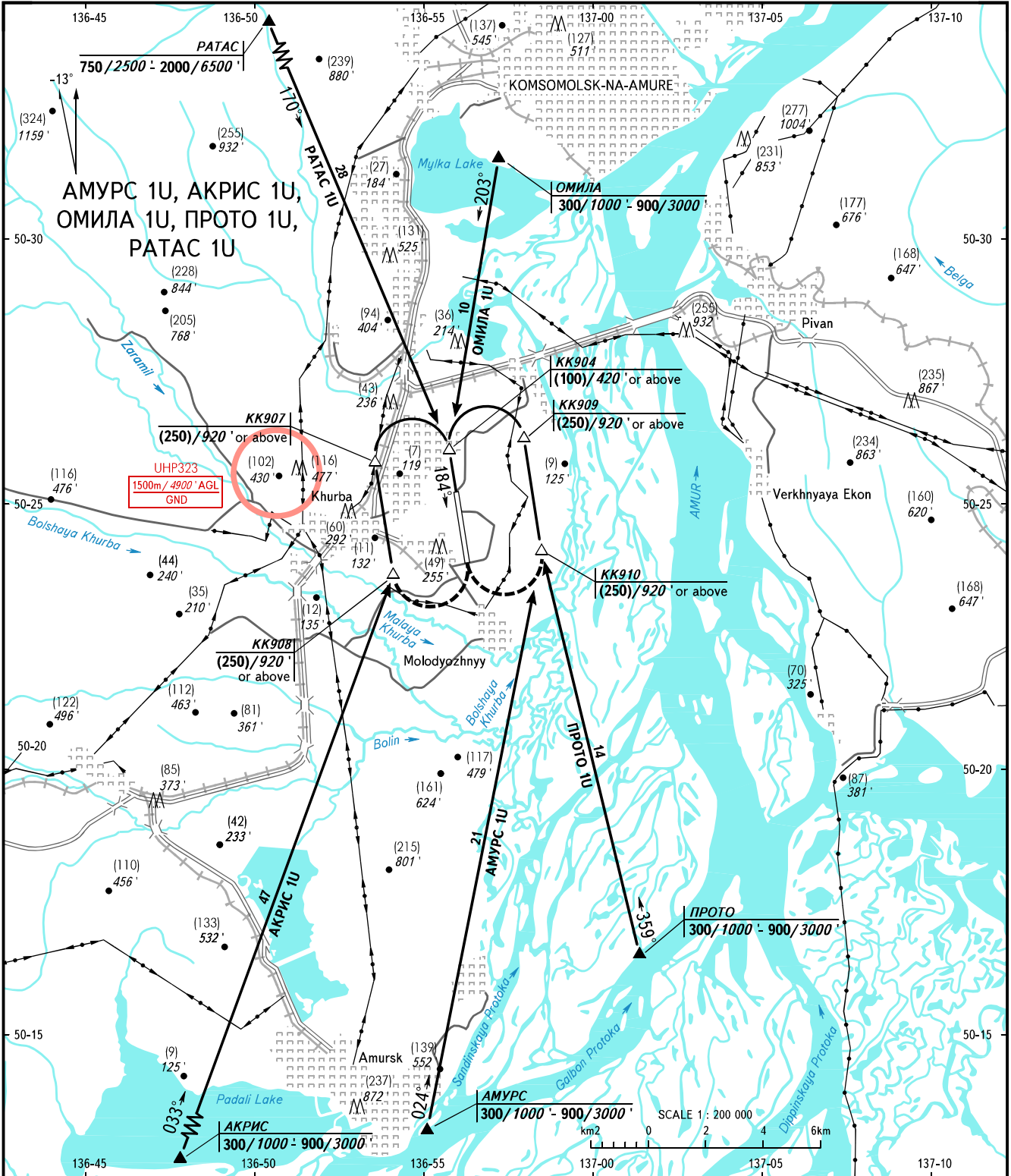


VFR  
ARRIVAL  
CHART

KOMSOMOLSK-NA-AMURE, RUSSIA

KHURBA  
RWY 18

TRANSITION  
LEVEL : **1**



NEGLINKA TOWER 122.000

**1** TRANSITION LEVEL:

- FL100 when QFE is 757mm mercury column (1009hPa) or above;
- FL110 when QFE is 730mm mercury column (973 hPa) or above, but less than 757mm mercury column (1009 hPa);
- FL120 when QFE is less than 730mm mercury column (973 hPa).

BEARINGS AND TRACKS ARE MAGNETIC  
ALTITUDES IN METRES AND FEET  
HEIGHTS IN METRES  
ELEVATIONS IN METRES AND FEET  
DISTANCES IN KILOMETRES

Alt set: -QFE(QNH on req);  
-mm(hPa on req).

CHANGE: NIL