

VFR DEPARTURE CHART

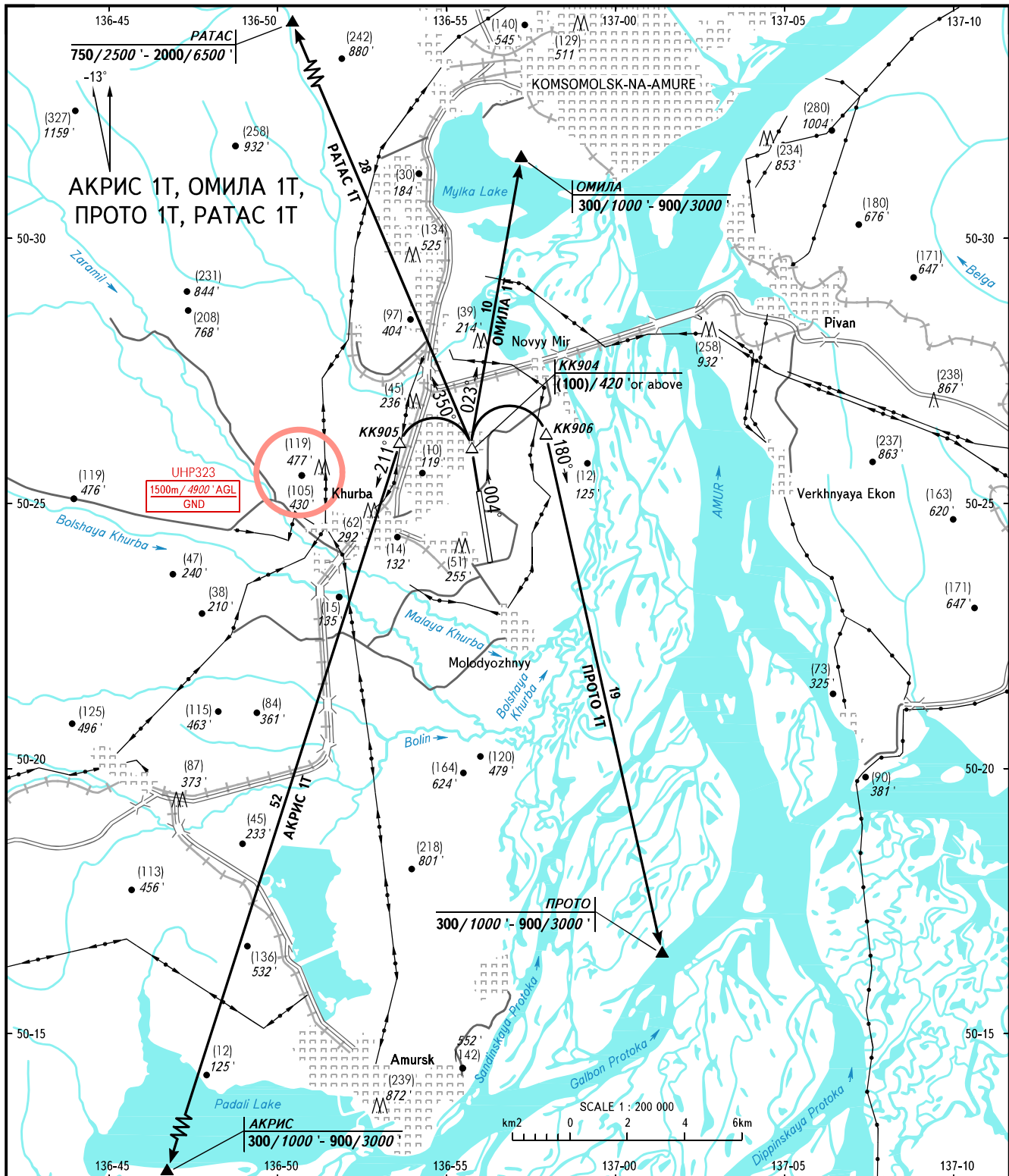
KOMSOMOLSK-NA-AMURE, RUSSIA

KHURBA

RWY 36

TRANSITION HGT : (2700)

TRANSITION ALT : 9000'



NEGLINKA TOWER 122.000

BEARINGS AND TRACKS ARE MAGNETIC  
 ALTITUDES IN METRES AND FEET  
 HEIGHTS IN METRES  
 ELEVATIONS IN METRES AND FEET  
 DISTANCES IN KILOMETRES

Alt set: -QFE(QNH on req);  
 -mm(hPa on req).