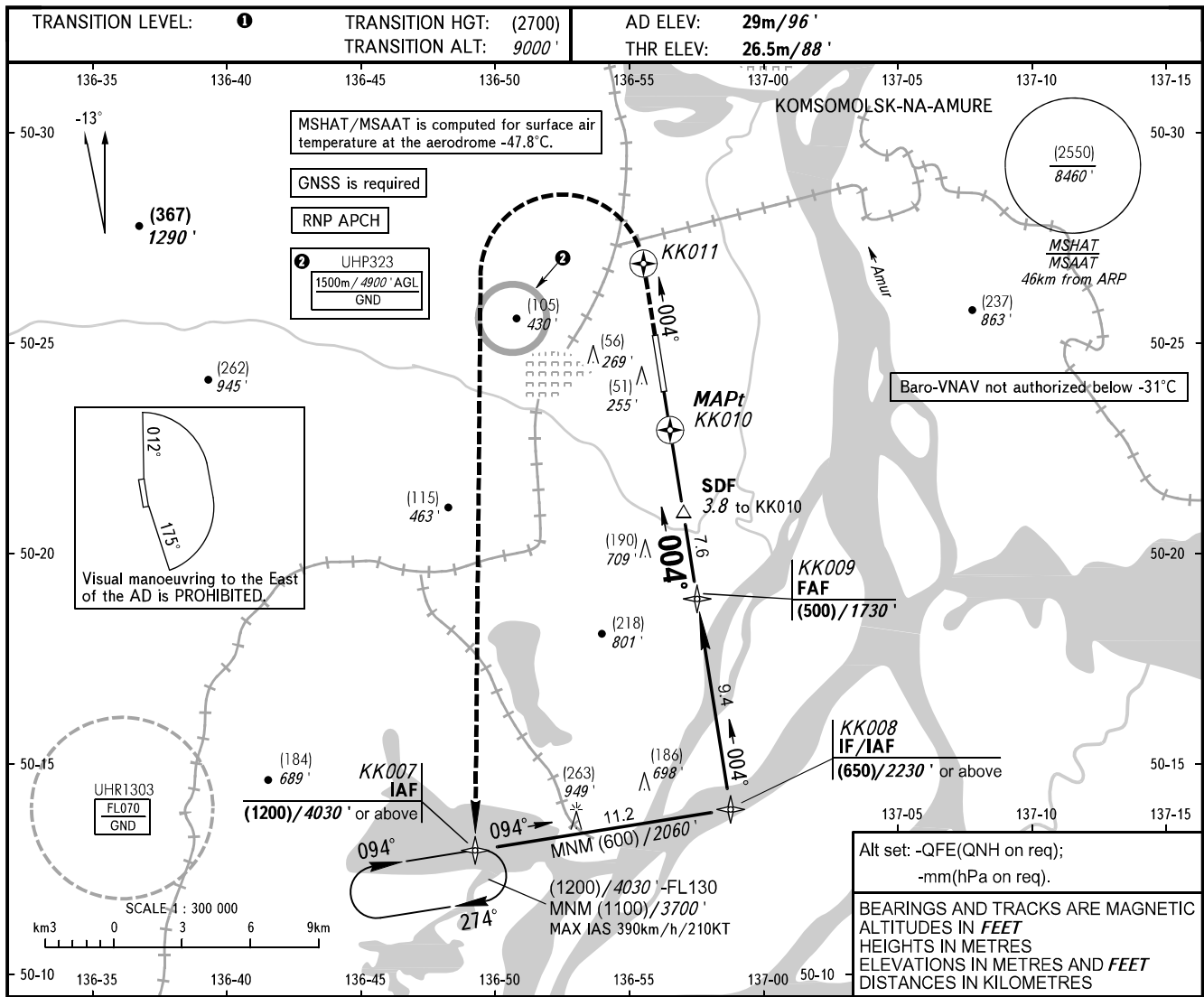


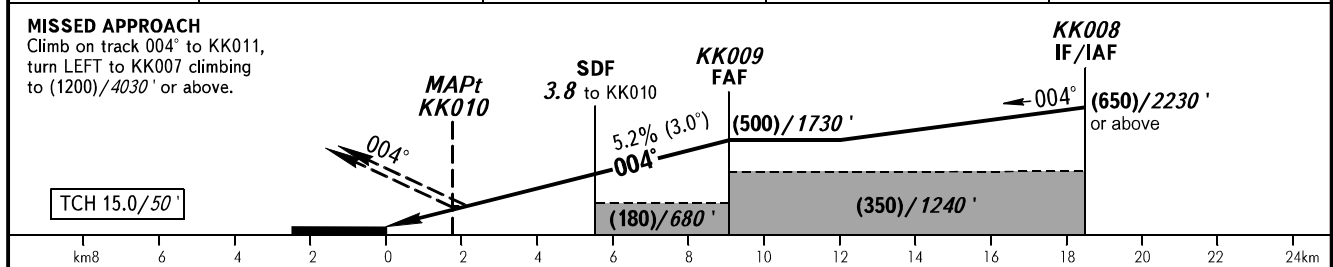
**INSTRUMENT
APPROACH
CHART - ICAO**

NEGLINKA TOWER 122.000

KOMSOMOLSK-NA-AMURE, RUSSIA
KHURBA
RNP RWY 36



DIST to KK010	2.0	4.0	6.0	7.6
HEIGHT/ALTITUDE	(210)/776'	(315)/1120'	(419)/1464'	(500)/1730'



OCA(H)		A	B	C	D					
Straight-in Approach	LNAV/VNAV	120(95) 400'(320')	125(95) 420'(320')	125(100) 420'(330')	130(100) 430'(330')					
	LNAV	135(105) 450'(350')	135(105) 450'(350')	135(105) 450'(350')	135(105) 450'(350')					
Circling		175(145) 580'(480')	190(160) 630'(530')	340(310) 1120'(1020')	345(315) 1140'(1040')					
GROUND SPEED	km/h	150	180	210	240	270	300	330	360	390
	kt	81	97	113	130	146	162	178	194	211
RATE OF DESCENT	m/s	2.2	2.6	3.0	3.5	3.9	4.3	4.8	5.2	5.6
	ft/min	427	512	597	682	768	853	938	1024	1109

① TRANSITION LEVEL:
- FL100 when QFE is 757mm mercury column (1009 hPa) or above;
- FL110 when QFE is 730mm mercury column (973 hPa) or above, but less than 757mm mercury column (1009 hPa);
- FL120 when QFE is less than 730mm mercury column (973 hPa).
NOTE:
1. MAPt at KK010. Timing not authorized for defining MAPt.
2. Holding area is AVBL by arrangement with ATS unit.