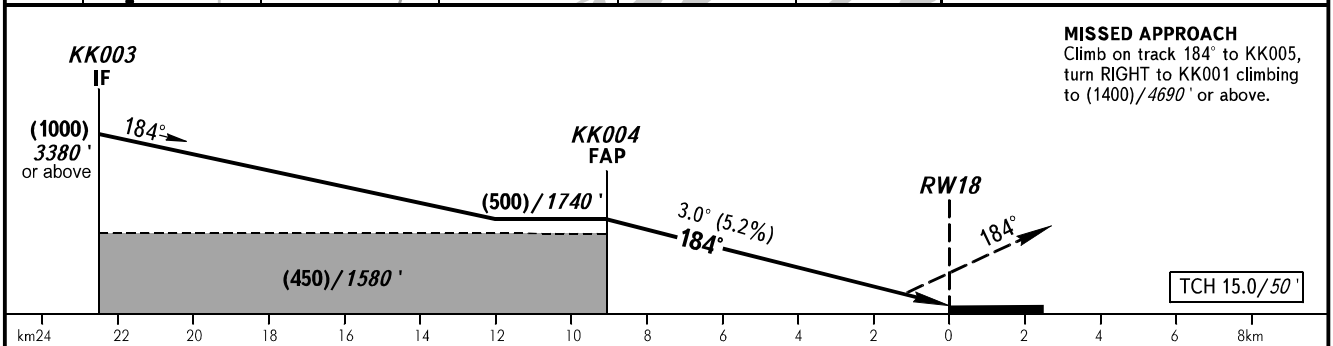
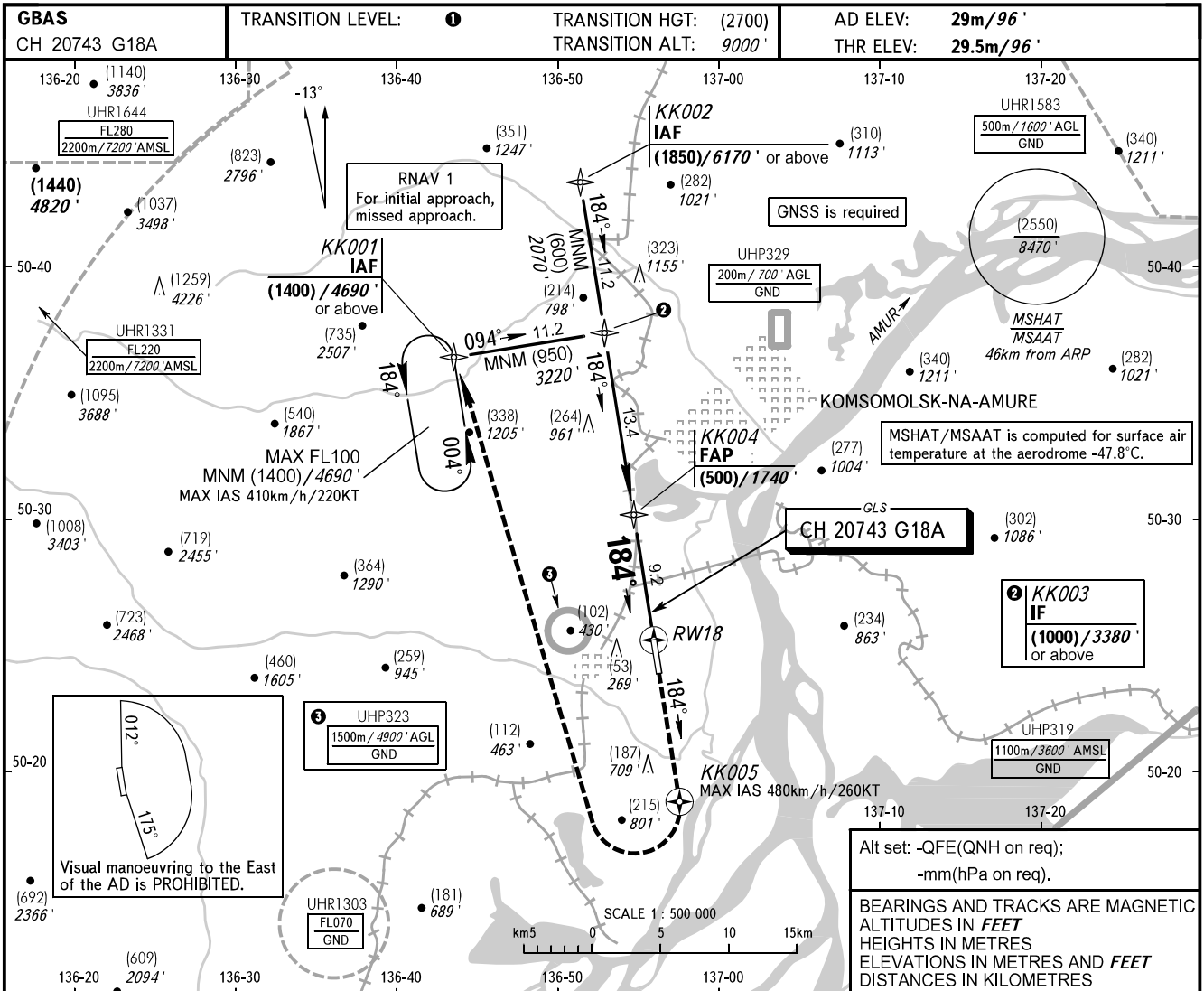


**INSTRUMENT
APPROACH
CHART - ICAO**

**KOMSOMOLSK-NA-AMURE, RUSSIA
KHURBA
GLS RWY 18**

NEGLINKA TOWER 122.000



OCA(H)		A	B	C	D					
Straight-in Approach		90(61) 296' (201')	93(64) 306' (210')	96(67) 315' (220')	99(70) 325' (230')					
Circling		175(145) 580' (480')	190(160) 630' (530')	340(310) 1120' (1020')	345(315) 1140' (1040')					
GROUND SPEED	km/h	150	180	210	240	270	300	330	360	390
	kt	81	97	113	130	146	162	178	194	211
RATE OF DESCENT	m/s	2.2	2.6	3.0	3.5	3.9	4.3	4.8	5.2	5.6
	ft/min	427	512	597	682	768	853	938	1024	1109

1 TRANSITION LEVEL:
 - FL100 when QFE is 757mm mercury column (1009 hPa) or above;
 - FL110 when QFE is 730mm mercury column (973 hPa) or above, but less than 757mm mercury column (1009 hPa);
 - FL120 when QFE is less than 730mm mercury column (973 hPa).

CHANGE: New chart