

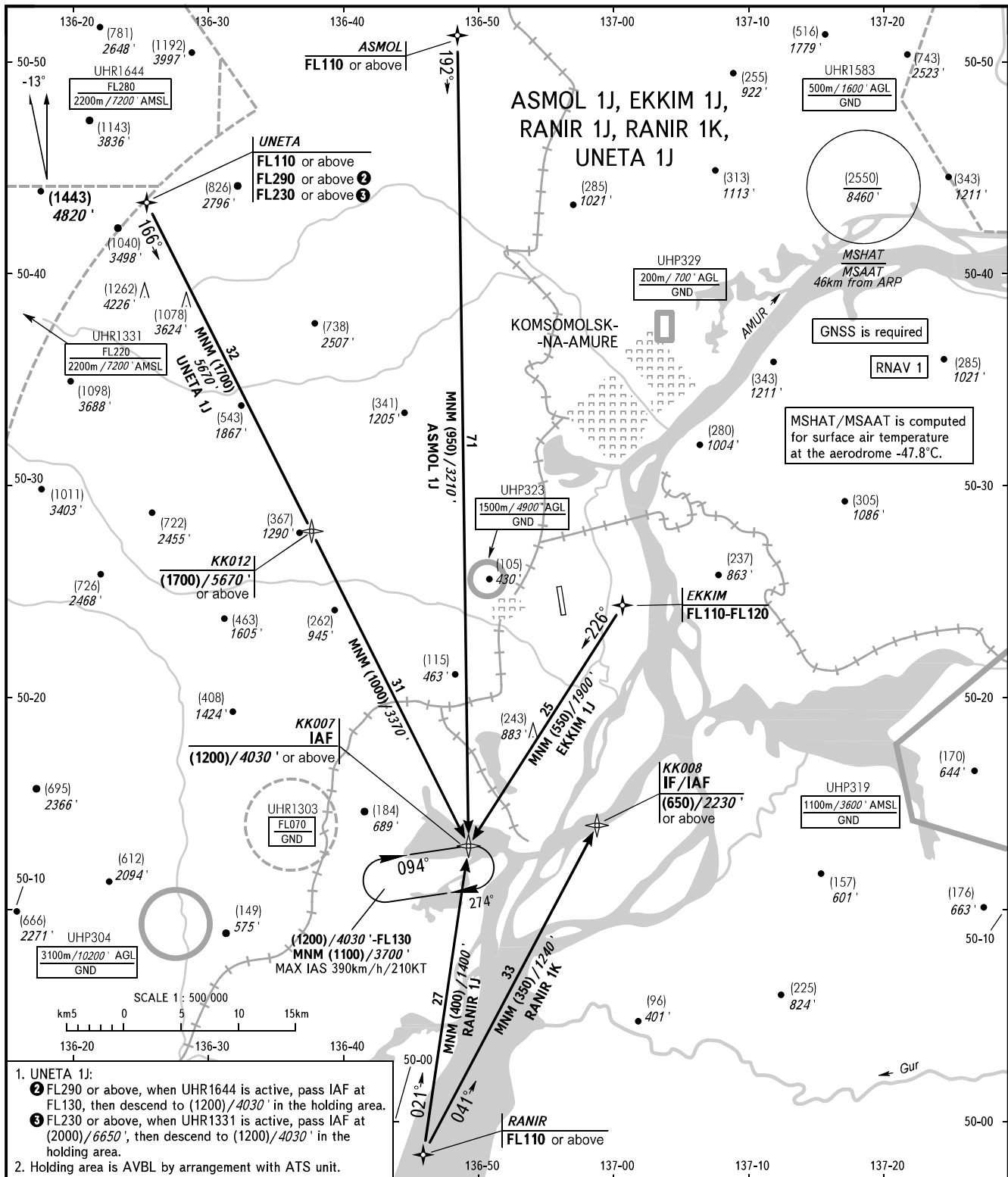
STANDARD ARRIVAL CHART  
INSTRUMENT (STAR) - ICAO

KOMSOMOLSK-NA-AMURE, RUSSIA

KHURBA

RNAV RWY 36

TRANSITION  
LEVEL: 1



- UNETA 1J:
  - FL290 or above, when UHR1644 is active, pass IAF at FL130, then descend to (1200)/4030' in the holding area.
  - FL230 or above, when UHR1331 is active, pass IAF at (2000)/6650', then descend to (1200)/4030' in the holding area.
- Holding area is AVBL by arrangement with ATS unit.

NEGLINKA TOWER 122.000

TRANSITION LEVEL:

- FL100 when QFE is 757mm mercury column (1009hPa) or above;
- FL110 when QFE is 730mm mercury column (973 hPa) or above, but less than 757mm mercury column (1009 hPa);
- FL120 when QFE is less than 730mm mercury column (973 hPa).

WARNING:

- CDO is applicable, if there is no conflicting traffic.
- CDO may be cancelled by ATS unit in case of necessity to provide separation.
- To facilitate CDO in high density air traffic, ATS unit shall issue next clearance in advance, as early as practicable.

BEARINGS AND TRACKS ARE MAGNETIC  
ALTITUDES IN FEET  
HEIGHTS IN METRES  
ELEVATIONS IN METRES AND FEET  
DISTANCES IN KILOMETRES

Alt set: -QFE(QNH on req);  
-mm(hPa on req).