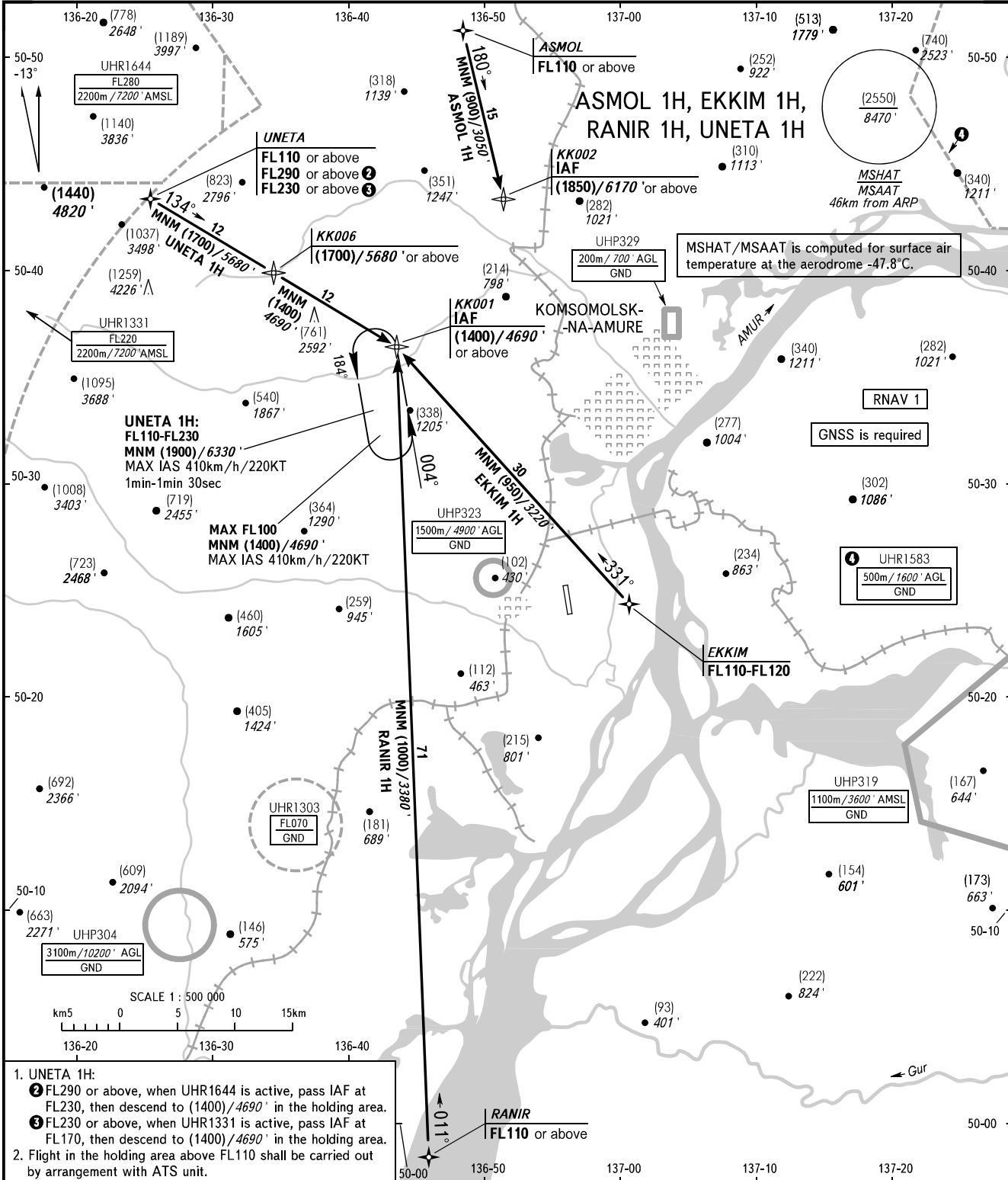


STANDARD ARRIVAL CHART  
INSTRUMENT (STAR) - ICAO

KOMSOMOLSK-NA-AMURE, RUSSIA  
KHURBA  
RNAV RWY 18

TRANSITION  
LEVEL : ①



- UNETA 1H:
  - ② FL290 or above, when UHR1644 is active, pass IAF at FL230, then descend to (1400)/4690' in the holding area.
  - ③ FL230 or above, when UHR1331 is active, pass IAF at FL170, then descend to (1400)/4690' in the holding area.
- Flight in the holding area above FL110 shall be carried out by arrangement with ATS unit.

NEGLINKA TOWER 122.000

BEARINGS AND TRACKS ARE MAGNETIC  
ALTITUDES IN FEET  
HEIGHTS IN METRES  
ELEVATIONS IN METRES AND FEET  
DISTANCES IN KILOMETRES

Alt set: -QFE(QNH on req);  
-mm(hPa on req).

- ① TRANSITION LEVEL:
- FL100 when QFE is 757mm mercury column (1009hPa) or above;
  - FL110 when QFE is 730mm mercury column (973 hPa) or above, but less than 757mm mercury column (1009 hPa);
  - FL120 when QFE is less than 730mm mercury column (973 hPa).

- WARNING:**
- CDO are applicable, if there is no conflicting traffic.
  - CDO may be cancelled by ATS unit in case of necessity to provide separation.
  - To facilitate CDO in high density air traffic, ATS unit shall issue next clearance in advance, as early as practicable.

CHANGE: New chart