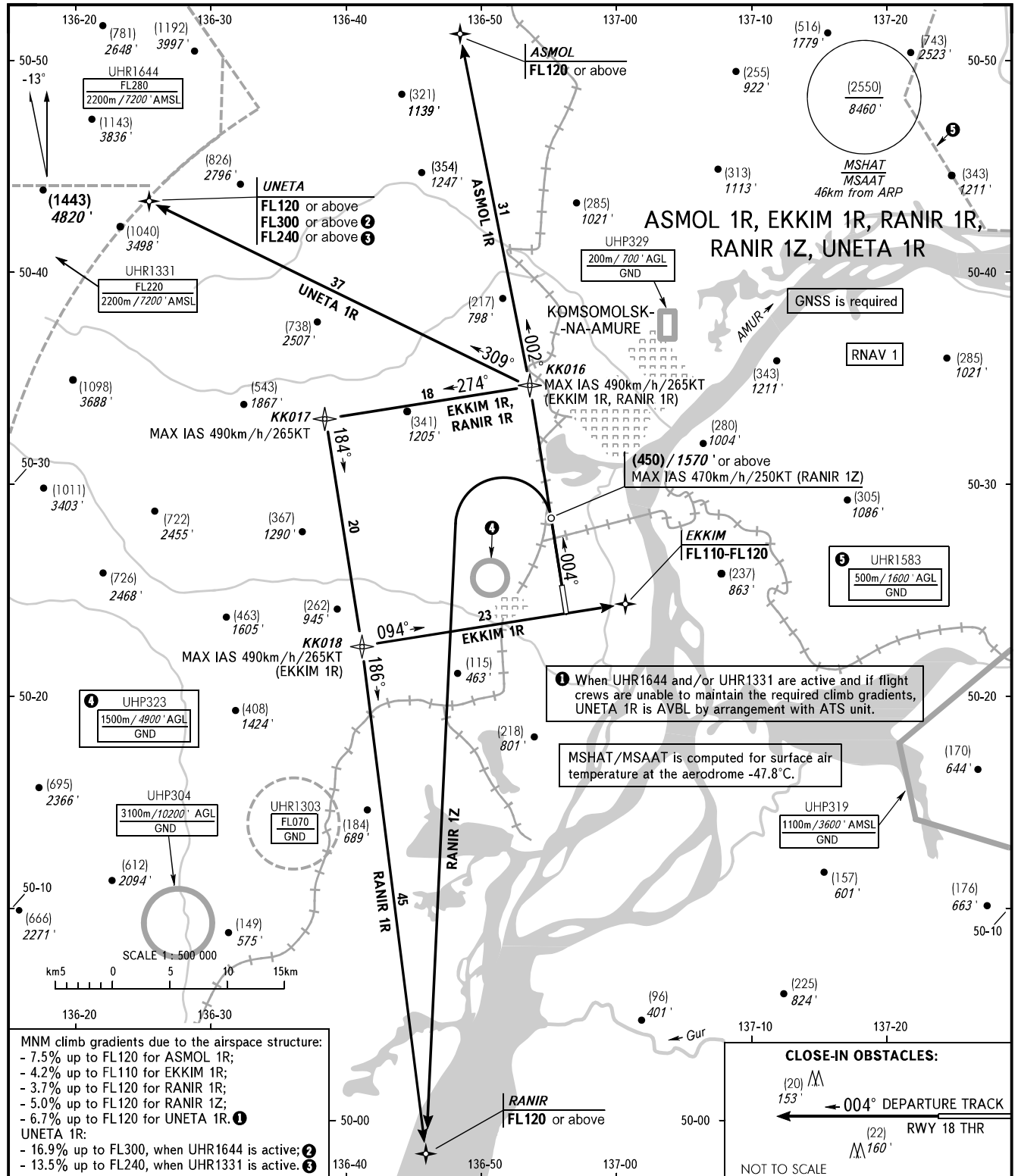


STANDARD DEPARTURE CHART
INSTRUMENT (SID) - ICAO

KOMSOMOLSK-NA-AMURE, RUSSIA
KHURBA
RNAV RWY 36

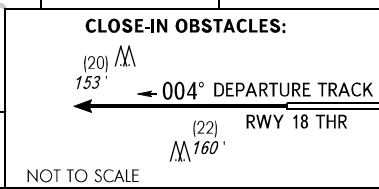
TRANSITION HGT: (2700)
TRANSITION ALT: 9000'



① When UHR1644 and/or UHR1331 are active and if flight crews are unable to maintain the required climb gradients, UNETA 1R is AVBL by arrangement with ATS unit.

MSHAT/MSAAT is computed for surface air temperature at the aerodrome -47.8°C.

MNM climb gradients due to the airspace structure:
- 7.5% up to FL120 for ASMOL 1R;
- 4.2% up to FL110 for EKKIM 1R;
- 3.7% up to FL120 for RANIR 1R;
- 5.0% up to FL120 for RANIR 1Z;
- 6.7% up to FL120 for UNETA 1R. ①
UNETA 1R:
- 16.9% up to FL300, when UHR1644 is active; ②
- 13.5% up to FL240, when UHR1331 is active. ③



WARNING:

- MNM climb gradients due to obstacles:
- 3.6% up to (650)/2230' for EKKIM 1R, RANIR 1R;
- 3.8% up to (1150)/3870' for UNETA 1R.
- CCO are applied in low density air traffic.
- Rate of climb may be assigned to flight crews to provide CCO in high density air traffic.
- ATS unit shall use "Direct to" instruction to facilitate CCO.
- The phrase "Expect CCO before (WPT)" is used, if CCO are AVBL after ACFT passes KK016.
- In high density air traffic CCO are applied, where practicable.

NEGLINKA TOWER 122.000

BEARINGS AND TRACKS ARE MAGNETIC
ALTITUDES IN FEET
HEIGHTS IN METRES
ELEVATIONS IN METRES AND FEET
DISTANCES IN KILOMETRES

Alt set: -QFE(QNH on req);
-mm(hPa on req).