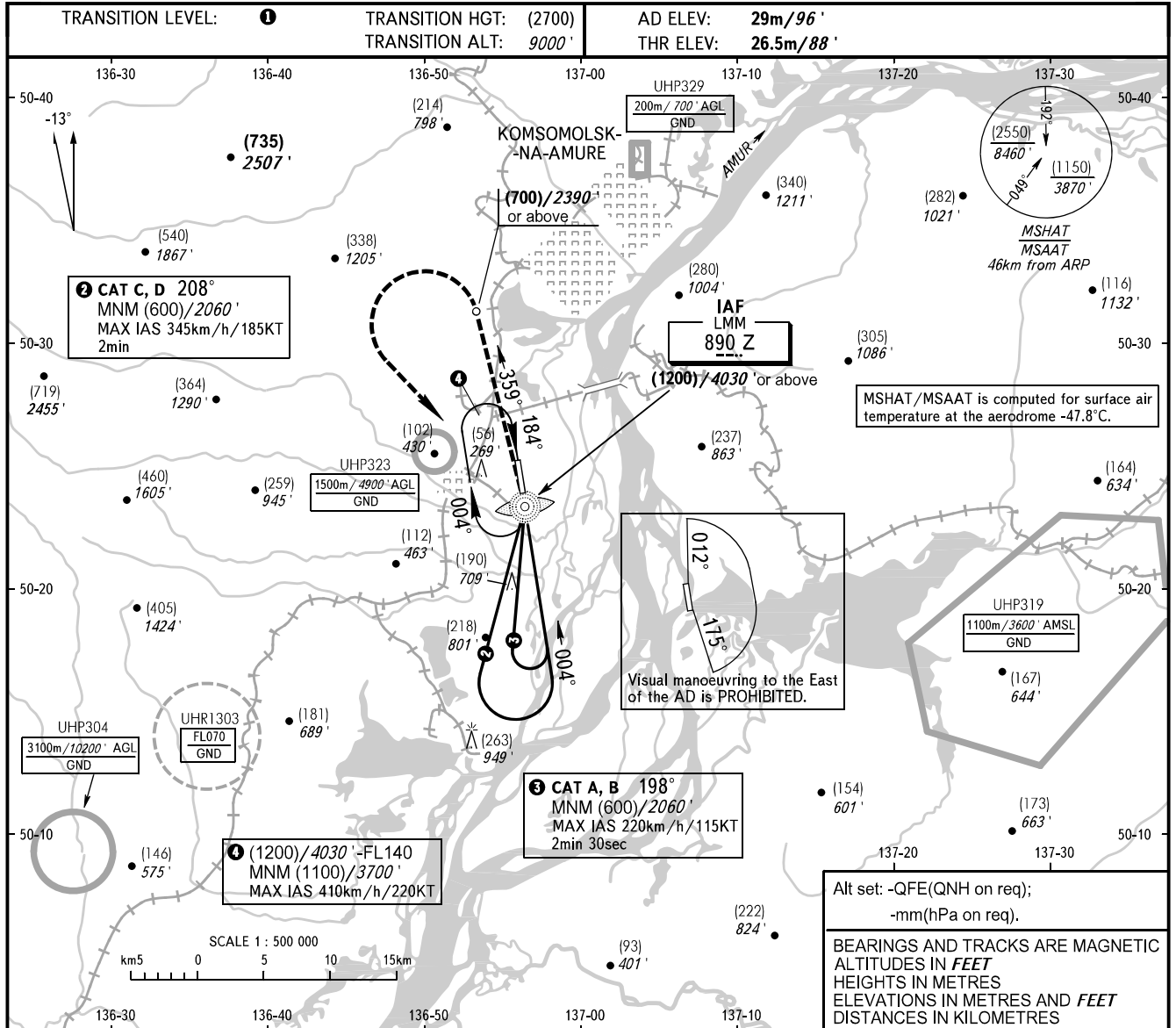


INSTRUMENT  
APPROACH  
CHART - ICAO

NEGLINKA TOWER 122.000

KOMSOMOLSK-NA-AMURE, RUSSIA  
KHURBA  
NDB X RWY 36



OCA(H)		A	B	C	D
Straight-in Approach		295(270) 970' (890')	295(270) 970' (890')	295(270) 970' (890')	295(270) 970' (890')
	Circling	295(270) 970' (890')	295(270) 970' (890')	340(310) 1120' (1020')	345(315) 1140' (1040')

**1** TRANSITION LEVEL:  
- FL100 when QFE is 757mm mercury column (1009 hPa) or above;  
- FL110 when QFE is 730mm mercury column (973 hPa) or above,  
but less than 757mm mercury column (1009 hPa);  
- FL120 when QFE is less than 730mm mercury column (973 hPa).

**NOTE:**  
1. Turn before MAPt is PROHIBITED.  
2. MAPt at LMM Z.