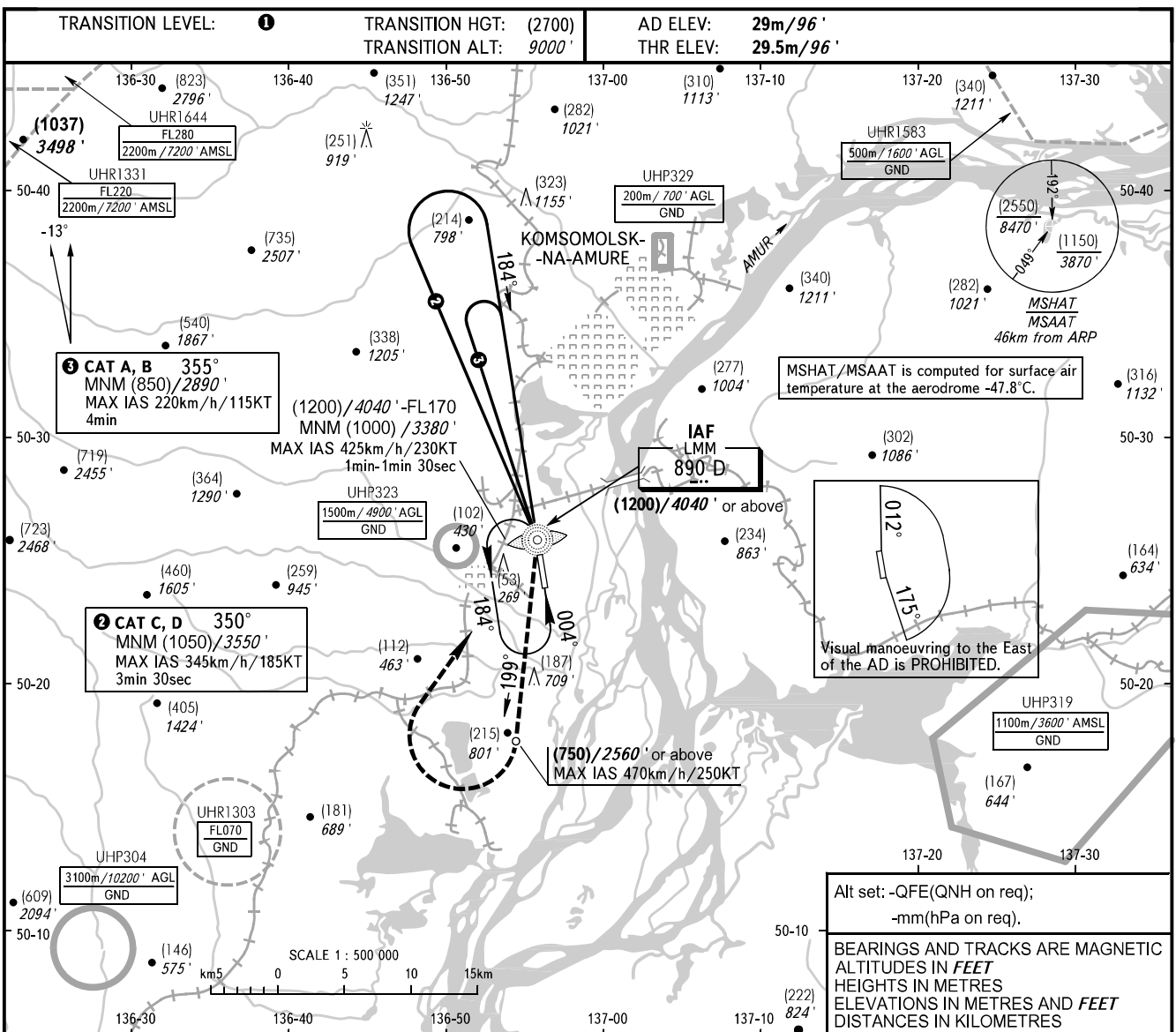


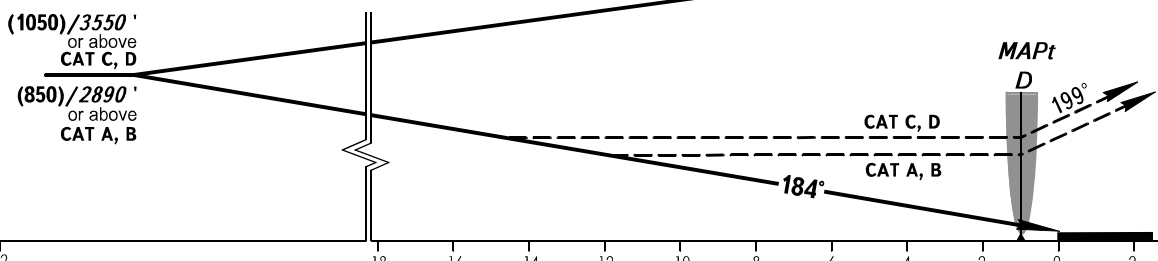
**INSTRUMENT
APPROACH
CHART - ICAO**

NEGLINKA TOWER 122.000

KOMSOMOLSK-NA-AMURE, RUSSIA
KHURBA
NDB X RWY 18



MISSED APPROACH
Climb on track 199° to (750)/2560' or above, turn RIGHT to LMM D climbing to (1200)/4040' or above.



OCA(H)		A	B	C	D
Straight-in Approach		445(415) 1460' (1370')	445(415) 1460' (1370')	540(515) 1780' (1690')	540(515) 1780' (1690')
	Circling	445(415) 1460' (1370')	445(415) 1460' (1370')	540(515) 1780' (1690')	540(515) 1780' (1690')

1. TRANSITION LEVEL:
- FL100 when QFE is 757mm mercury column (1009 hPa) or above;
- FL110 when QFE is 730mm mercury column (973 hPa) or above, but less than 757mm mercury column (1009 hPa);
- FL120 when QFE is less than 730mm mercury column (973 hPa).
NOTE:
1. Turn before MAPt is PROHIBITED.
2. MAPt at LMM D.

CHANGE: NOTE