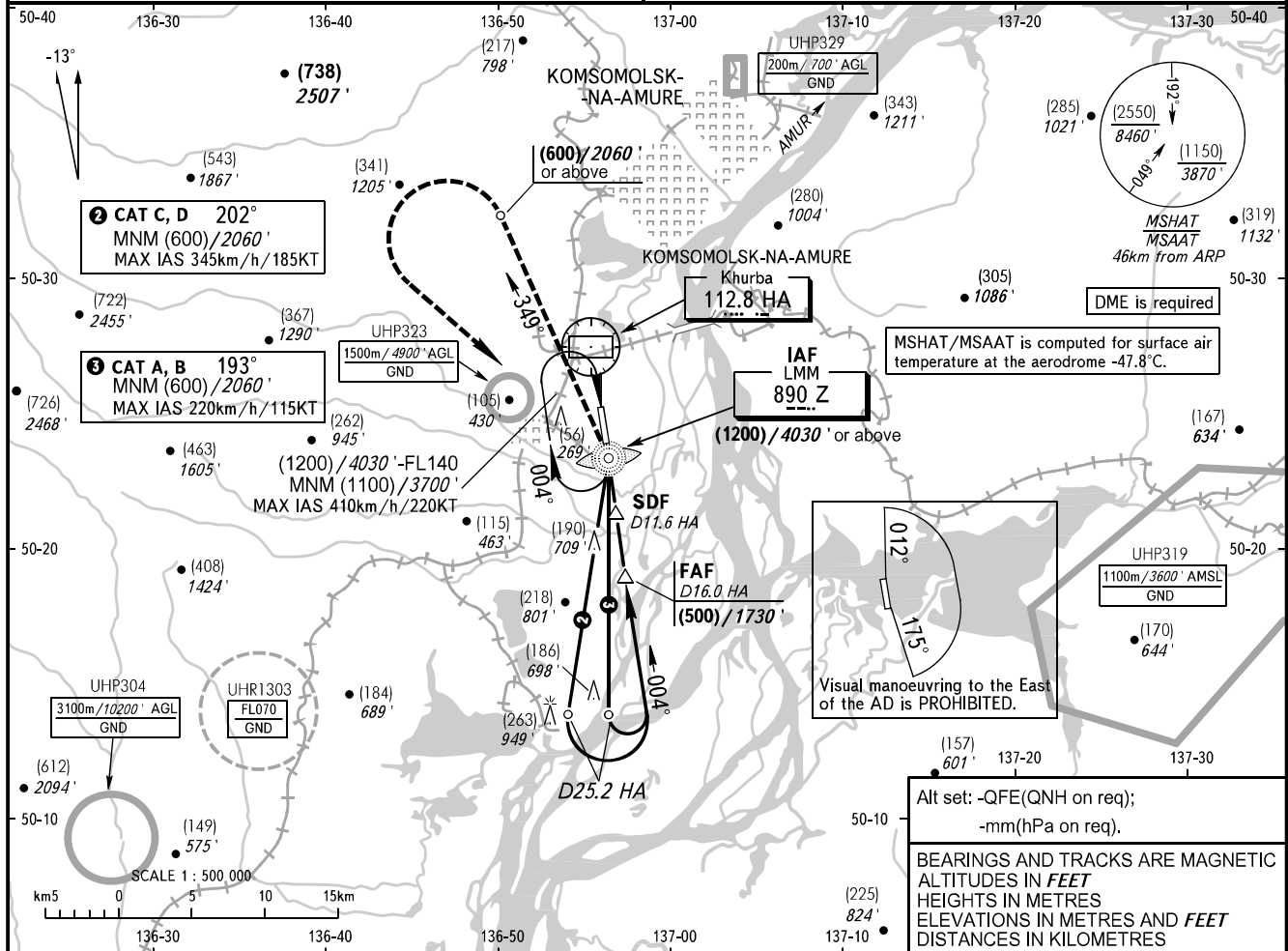


INSTRUMENT
APPROACH
CHART - ICAO

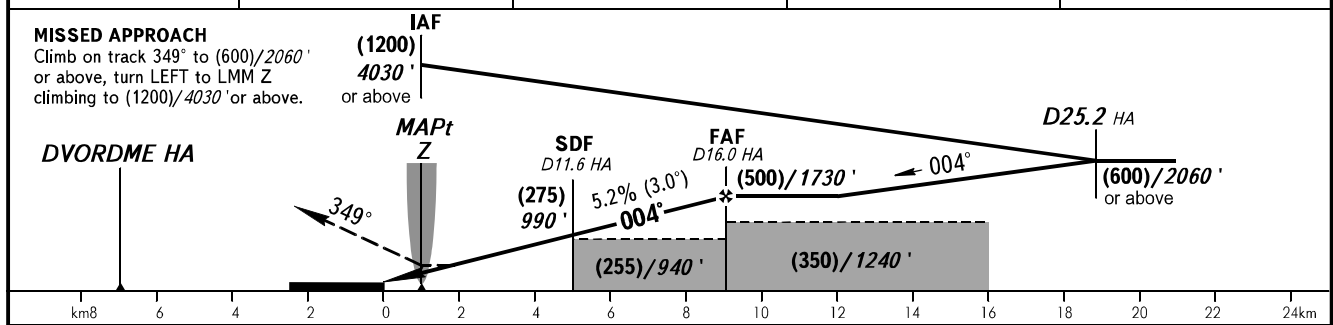
NEGLINKA TOWER 122.000

KOMSOMOLSK-NA-AMURE, RUSSIA
KHURBA
NDB Y RWY 36

TRANSITION LEVEL: **1** TRANSITION HGT: (2700)
TRANSITION ALT: 9000' AD ELEV: 29m/96'
THR ELEV: 26.5m/88'



DME HA	10.0	12.0	14.0	16.0
HEIGHT/ALTITUDE	(190)/710'	(294)/1054'	(399)/1398'	(500)/1730'



OCA(H)		A	B	C	D					
Straight-in Approach	With SDF	135(110) 450'(370')	135(110) 450'(370')	135(110) 450'(370')	135(110) 450'(370')					
	WO SDF	285(255) 940'(840')	285(255) 940'(840')	285(255) 940'(840')	285(255) 940'(840')					
Circling		285(255) 940'(840')	285(255) 940'(840')	340(310) 1120'(1020')	345(315) 1140'(1040')					
GROUND SPEED	km/h	150	180	210	240	270	300	330	360	390
	kt	81	97	113	130	146	162	178	194	211
RATE OF DESCENT	m/s	2.2	2.6	3.0	3.5	3.9	4.3	4.8	5.2	5.6
	ft/min	427	512	597	682	768	853	938	1024	1109

1 TRANSITION LEVEL:
- FL100 when QFE is 757mm mercury column (1009 hPa) or above;
- FL110 when QFE is 730mm mercury column (973 hPa) or above,
but less than 757mm mercury column (1009 hPa);
- FL120 when QFE is less than 730mm mercury column (973 hPa).
NOTE:
1. MAPt at LMM Z. Timing not authorized for defining MAPt.
2. Turn before MAPt is PROHIBITED.