

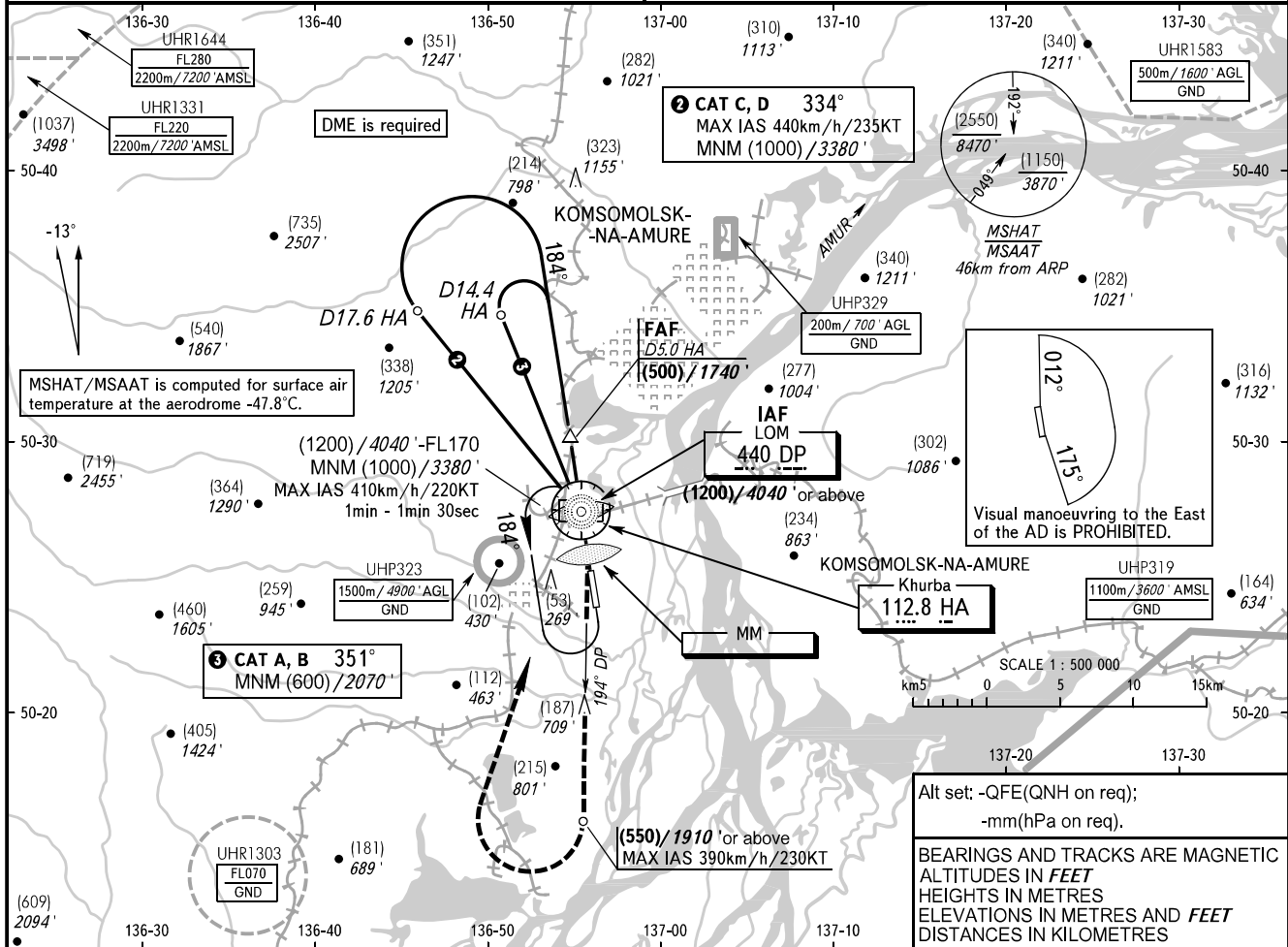
**INSTRUMENT
APPROACH
CHART - ICAO**

NEGLINKA TOWER 122.000

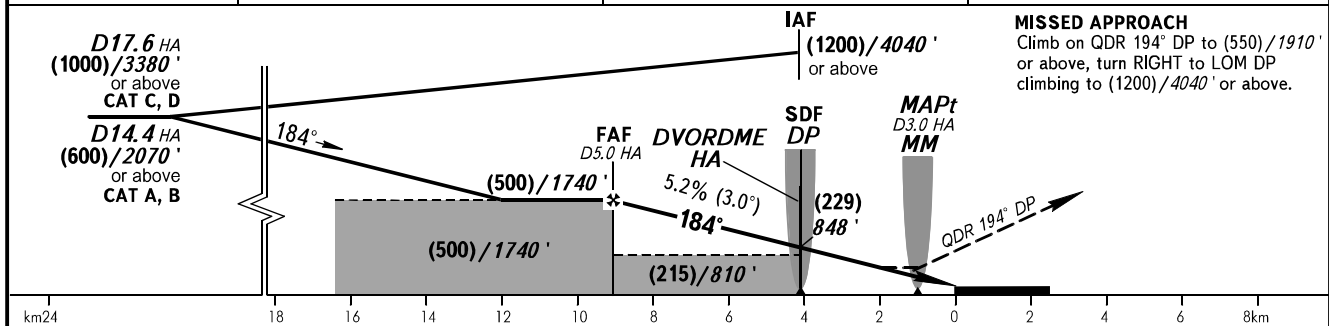
KOMSOMOLSK-NA-AMURE, RUSSIA
KHURBA
NDB Z RWY 18

TRANSITION LEVEL: ① TRANSITION HGT: (2700) AD ELEV: 29m/96' THR ELEV: 29.5m/96'

TRANSITION ALT: 9000'



DME HA	5.0	4.0	2.0
HEIGHT/ALTITUDE	(500)/1740'	(444)/1552'	(339)/1208'



OCA(H)	A	B	C	D
Straight-in Approach	145(120) 480' (400')	145(120) 480' (400')	145(120) 480' (400')	145(120) 480' (400')
Circling	175(145) 580' (480')	190(160) 630' (530')	340(310) 1120' (1020')	345(315) 1140' (1040')

① TRANSITION LEVEL:
 - FL 100 when QFE is 757mm mercury column (1009 hPa) or above;
 - FL 110 when QFE is 730mm mercury column (973 hPa) or above, but less than 757mm mercury column (1009 hPa);
 - FL 120 when QFE is less than 730mm mercury column (973 hPa).
NOTE:
 1. MAPt at MM. Timing not authorized for defining MAPt.
 2. Turn before MAPt is PROHIBITED.

GROUND SPEED	km/h	150	180	210	240	270	300	330	360	390
	kt	81	97	113	130	146	162	178	194	211
RATE OF DESCENT	m/s	2.2	2.6	3.0	3.5	3.9	4.3	4.8	5.2	5.6
	ft/min	427	512	597	682	768	853	938	1024	1109

CHANGE: NIL