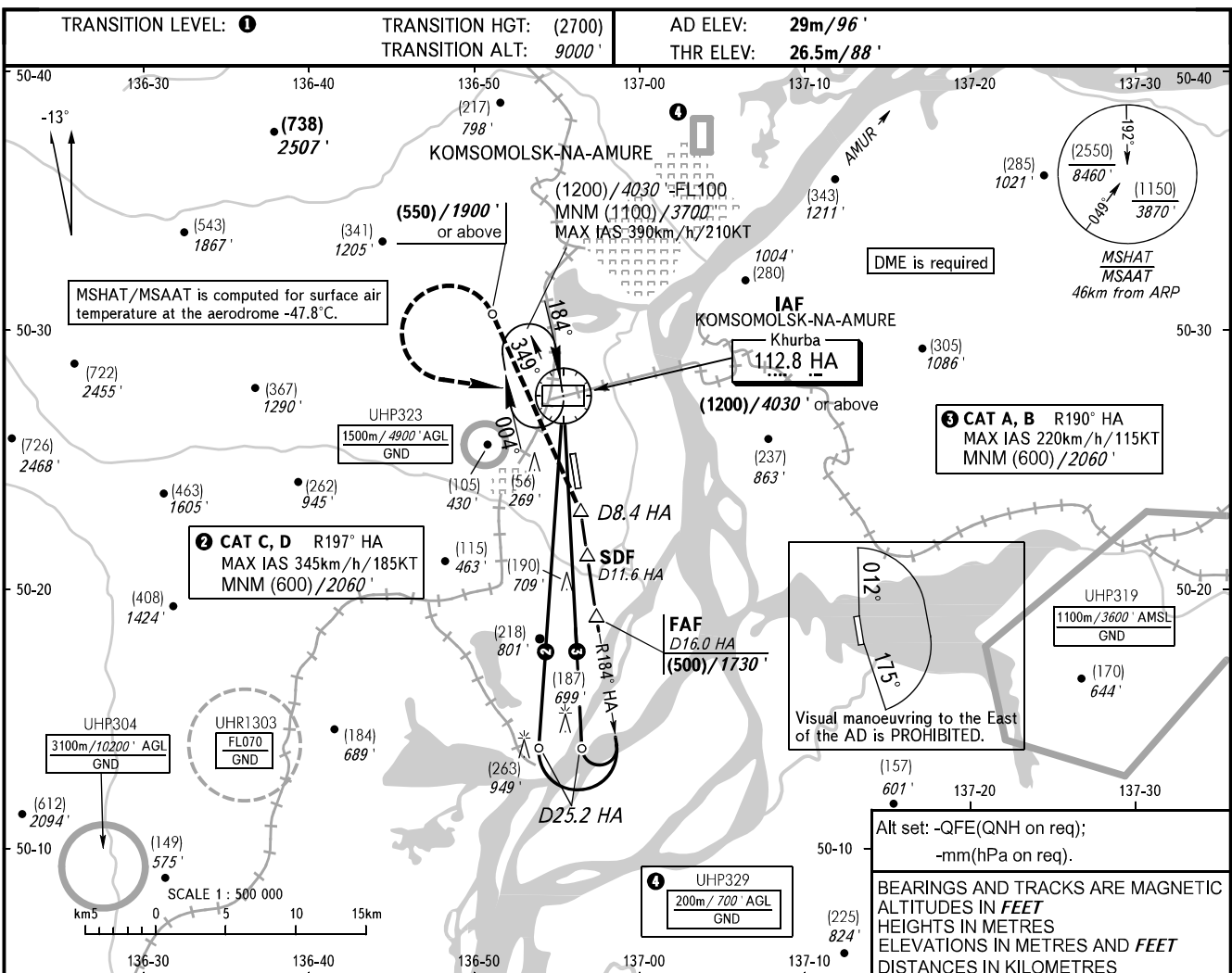


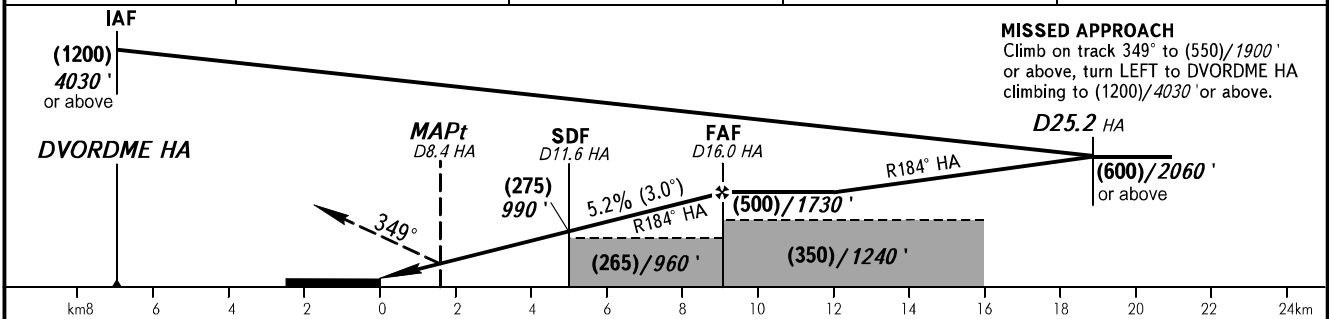
INSTRUMENT  
APPROACH  
CHART - ICAO

NEGLINKA TOWER 122.000

KOMSOMOLSK-NA-AMURE, RUSSIA  
KHURBA  
DVOR X RWY 36



DME HA	10.0	12.0	14.0	16.0
HEIGHT/ALTITUDE	(190)/710'	(294)/1054'	(399)/1398'	(500)/1730'



OCA(H)		A	B	C	D
Straight-in Approach	With SDF	135(110) 450'(370')	135(110) 450'(370')	135(110) 450'(370')	135(110) 450'(370')
	WO SDF	290(265) 960'(870')	290(265) 960'(870')	290(265) 960'(870')	290(265) 960'(870')
Circling		175(145) 580'(480')	190(160) 630'(530')	340(310) 1120'(1020')	345(315) 1140'(1040')

**1** TRANSITION LEVEL:  
 - FL100 when QFE is 757mm mercury column (1009 hPa) or above;  
 - FL110 when QFE is 730mm mercury column (973 hPa) or above, but less than 757mm mercury column (1009 hPa);  
 - FL120 when QFE is less than 730mm mercury column (973 hPa).  
**NOTE:**  
 1. MAPt at D8.4 HA. Timing not authorized for defining MAPt.  
 2. Turn before MAPt is PROHIBITED.

GROUND SPEED	km/h	150	180	210	240	270	300	330	360	390
	kt	81	97	113	130	146	162	178	194	211
RATE OF DESCENT	m/s	2.2	2.6	3.0	3.5	3.9	4.3	4.8	5.2	5.6
	ft/min	427	512	597	682	768	853	938	1024	1109