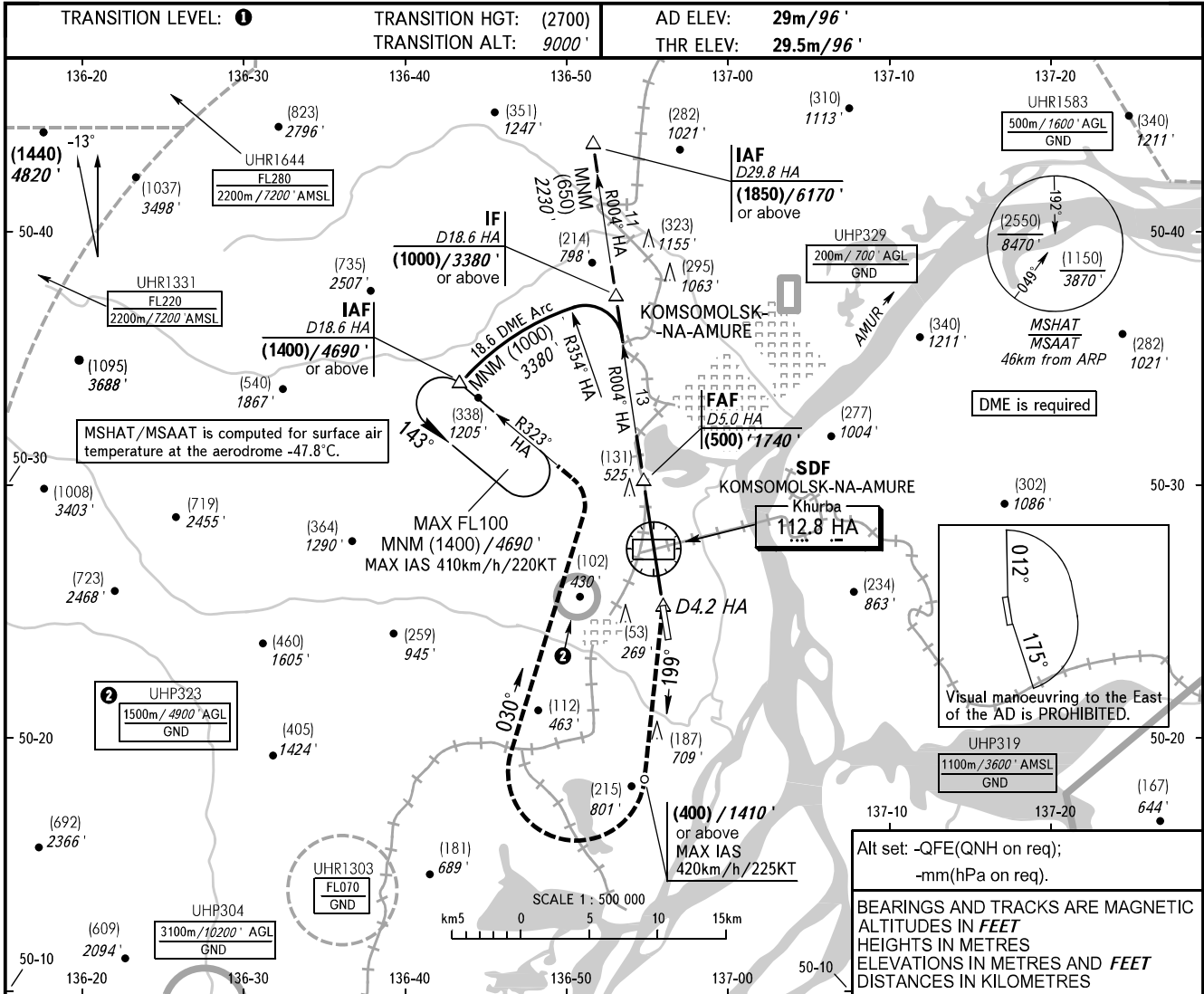


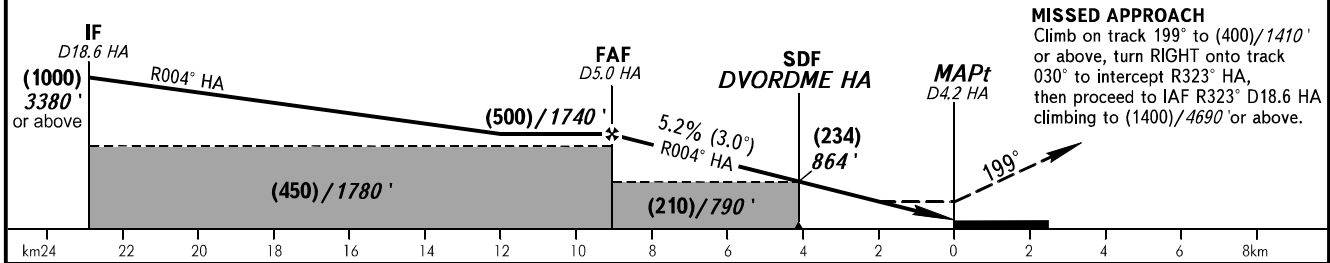
**INSTRUMENT  
APPROACH  
CHART - ICAO**

NEGLINKA TOWER 122.000

**KOMSOMOLSK-NA-AMURE, RUSSIA  
KHURBA  
DVOR Y RWY 18**



DME HA	5.0	4.0	2.0
HEIGHT/ALTITUDE	(500) / 1740'	(444) / 1552'	(339) / 1208'



OCA(H)		A	B	C	D
Straight-in Approach	135(105) 450' (350')	135(105) 450' (350')	135(105) 450' (350')	135(105) 450' (350')	
	175(145) 580' (480')	190(160) 630' (530')	340(310) 1120' (1020')	345(315) 1140' (1040')	
Circling					

**TRANSITION LEVEL:**  
 - FL100 when QFE is 757mm mercury column (1009 hPa) or above;  
 - FL110 when QFE is 730mm mercury column (973 hPa) or above, but less than 757mm mercury column (1009 hPa);  
 - FL120 when QFE is less than 730mm mercury column (973 hPa).  
**NOTE:**  
 1. MAPt at D4.2 HA. Timing not authorized for defining MAPt.  
 2. Turn before MAPt is PROHIBITED.

GROUND SPEED	km/h	150	180	210	240	270	300	330	360	390
	kt	81	97	113	130	146	162	178	194	211
RATE OF DESCENT	m/s	2.2	2.6	3.0	3.5	3.9	4.3	4.8	5.2	5.6
	ft/min	427	512	597	682	768	853	938	1024	1109

CHANGE: New chart