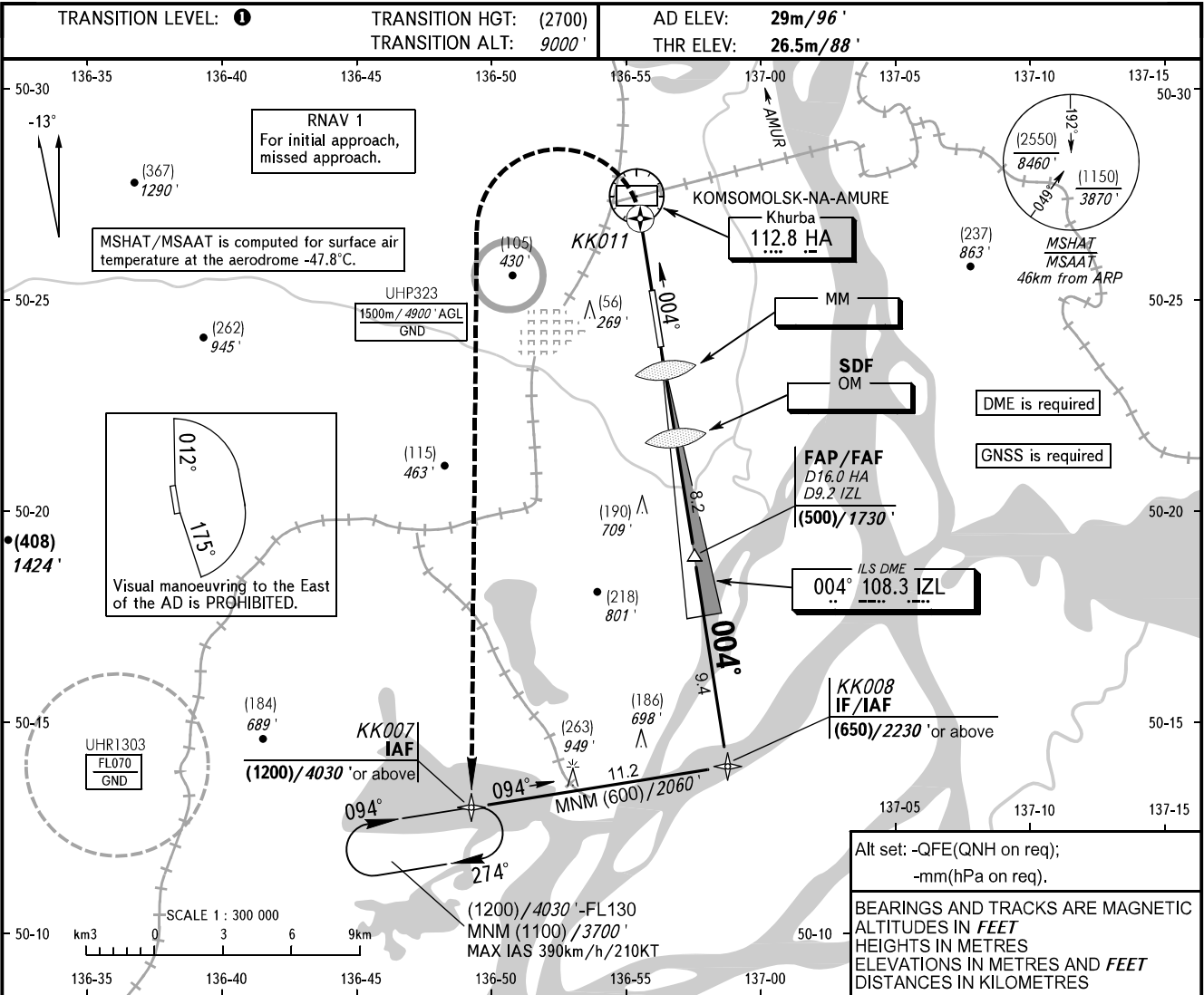


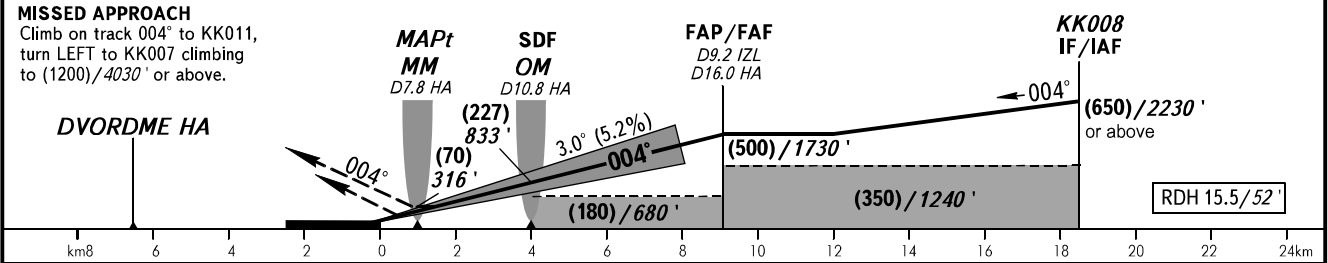
**INSTRUMENT
APPROACH
CHART - ICAO**

NEGLINKA TOWER 122.000

KOMSOMOLSK-NA-AMURE, RUSSIA
KHURBA
ILS Z, LOC Z RWY 36



DME HA	10.0	12.0	14.0	16.0
HEIGHT/ALTITUDE	(190)/710'	(294)/1054'	(399)/1398'	(500)/1730'



OCA(H)		A	B	C	D						
Straight-in Approach	CAT I	87(61) 286'(201')	90(64) 296'(210')	93(67) 306'(220')	96(70) 315'(230')						
	LOC	With SDF	125(100) 410'(330')	125(100) 410'(330')	125(100) 410'(330')	125(100) 410'(330')					
		WO SDF	205(180) 680'(600')	205(180) 680'(600')	205(180) 680'(600')	205(180) 680'(600')					
Circling		175(145) 580'(480')	190(160) 630'(530')	340(310) 1120'(1020')	345(315) 1140'(1040')						
GROUND SPEED		km/h	150	180	210	240	270	300	330	360	390
RATE OF DESCENT		kt	81	97	113	130	146	162	178	194	211
		m/s	2.2	2.6	3.0	3.5	3.9	4.3	4.8	5.2	5.6
		ft/min	427	512	597	682	768	853	938	1024	1109

TRANSITION LEVEL:
- FL100 when QFE is 757mm mercury column (1009 hPa) or above;
- FL110 when QFE is 730mm mercury column (973 hPa) or above, but less than 757mm mercury column (1009 hPa);
- FL120 when QFE is less than 730mm mercury column (973 hPa).

NOTE:
1. MAPt at MM. Timing not authorized for defining MAPt.
2. Zero range of DME IZL is indicated at RWY 36 THR.
3. Turn before MAPt is PROHIBITED.
4. Holding area is AVBL by arrangement with ATS unit.

CHANGE: New chart