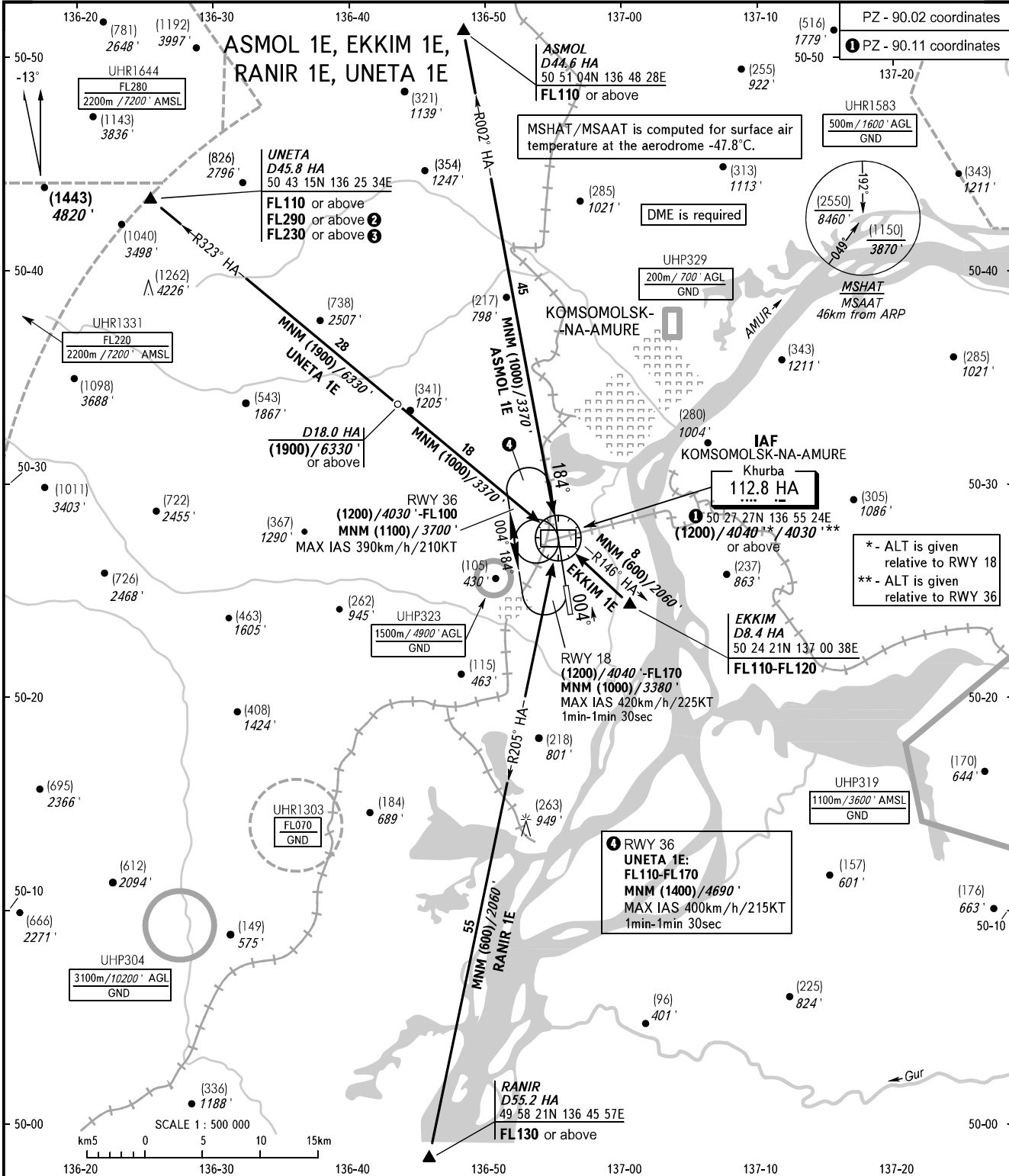


STANDARD ARRIVAL CHART
INSTRUMENT (STAR) - ICAO

KOMSOMOLSK-NA-AMURE, RUSSIA
KHURBA
RWY 18/36

TRANSITION
LEVEL: ①



NEGLINKA TOWER 122.000		<p>① TRANSITION LEVEL:</p> <ul style="list-style-type: none"> - FL100 when QFE is 757mm mercury column (1009hPa) or above; - FL110 when QFE is 730mm mercury column (973 hPa) or above, but less than 757mm mercury column (1009 hPa); - FL120 when QFE is less than 730mm mercury column (973 hPa). <p>WARNING:</p> <ol style="list-style-type: none"> UNETA 1E: <ol style="list-style-type: none"> FL290 or above, when UHR1644 is active, pass IAF at FL170, then descend to (1200)/4030' */4040' ** in the holding area. FL230 or above, when UHR1331 is active, pass IAF at FL110, then descend to (1200)/4030' */4040' ** in the holding area. RWY 36: Flight in the holding area above FL140 shall be carried out by arrangement with ATS unit.
BEARINGS AND TRACKS ARE MAGNETIC ALTITUDES IN FEET HEIGHTS IN METRES ELEVATIONS IN METRES AND FEET DISTANCES IN KILOMETRES	Alt set: -QFE(QNH on req); -mm(hPa on req).	