

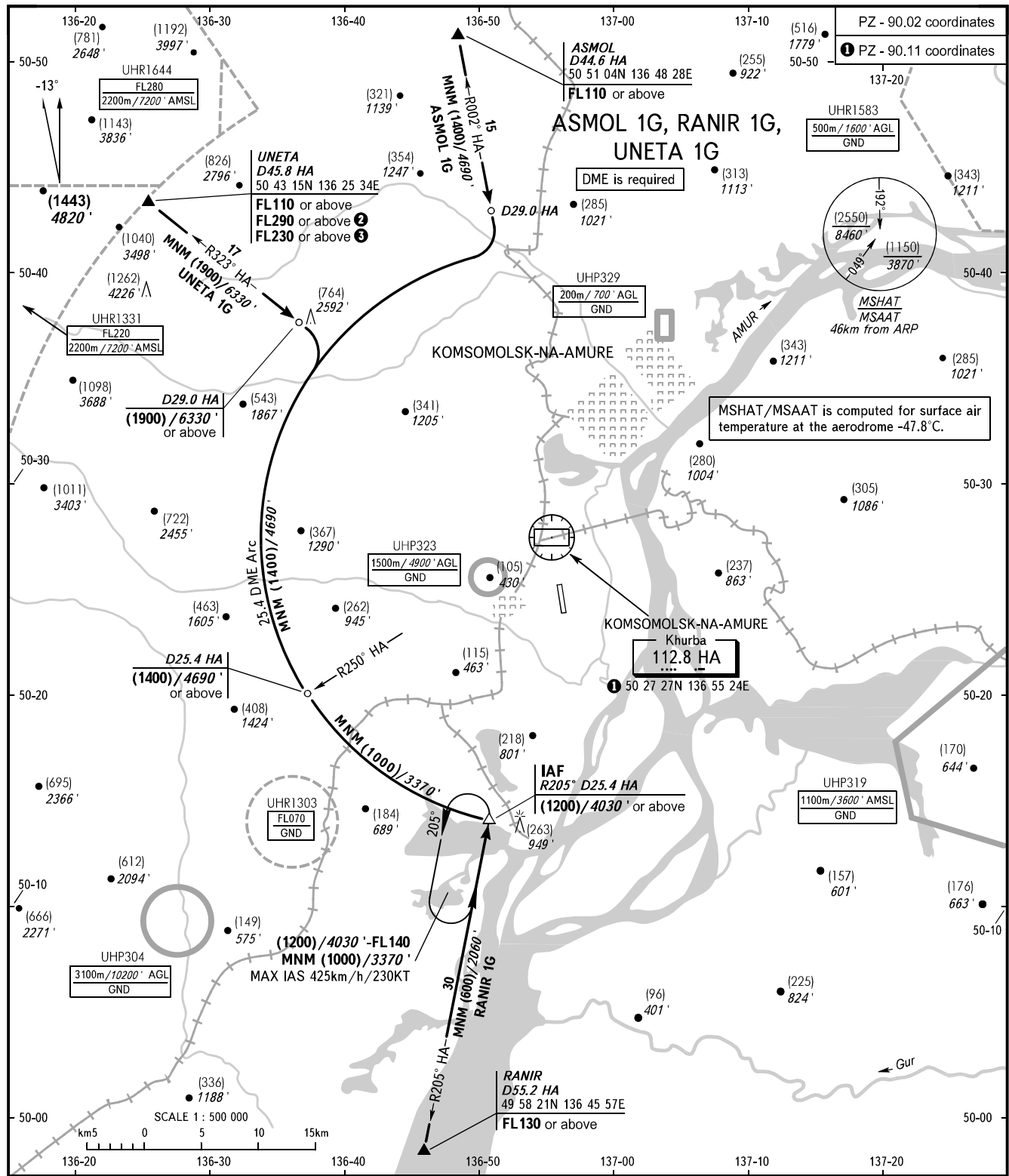
STANDARD ARRIVAL CHART
INSTRUMENT (STAR) - ICAO

KOMSOMOLSK-NA-AMURE, RUSSIA

KHURBA

RWY 36

TRANSITION
LEVEL : ①



NEGLINKA TOWER 122.000

- ① TRANSITION LEVEL:
- FL100 when QFE is 757mm mercury column (1009hPa) or above;
 - FL110 when QFE is 730mm mercury column (973 hPa) or above, but less than 757mm mercury column (1009 hPa);
 - FL120 when QFE is less than 730mm mercury column (973 hPa).
- WARNING:**

BEARINGS AND TRACKS ARE MAGNETIC
ALTITUDES IN FEET
HEIGHTS IN METRES
ELEVATIONS IN METRES AND FEET
DISTANCES IN KILOMETRES

Alt set: -QFE(QNH on req);
-mm(hPa on req).

- ② FL290 or above, when UHR1644 is active, pass IAF at FL110, then descend to (1200)/4030' in the holding area.
③ FL230 or above, when UHR1331 is active, pass IAF at (1300), then descend to (1200)/4030' in the holding area.
2. Holding area is AVBL by arrangement with ATS unit.

CHANGE: New chart