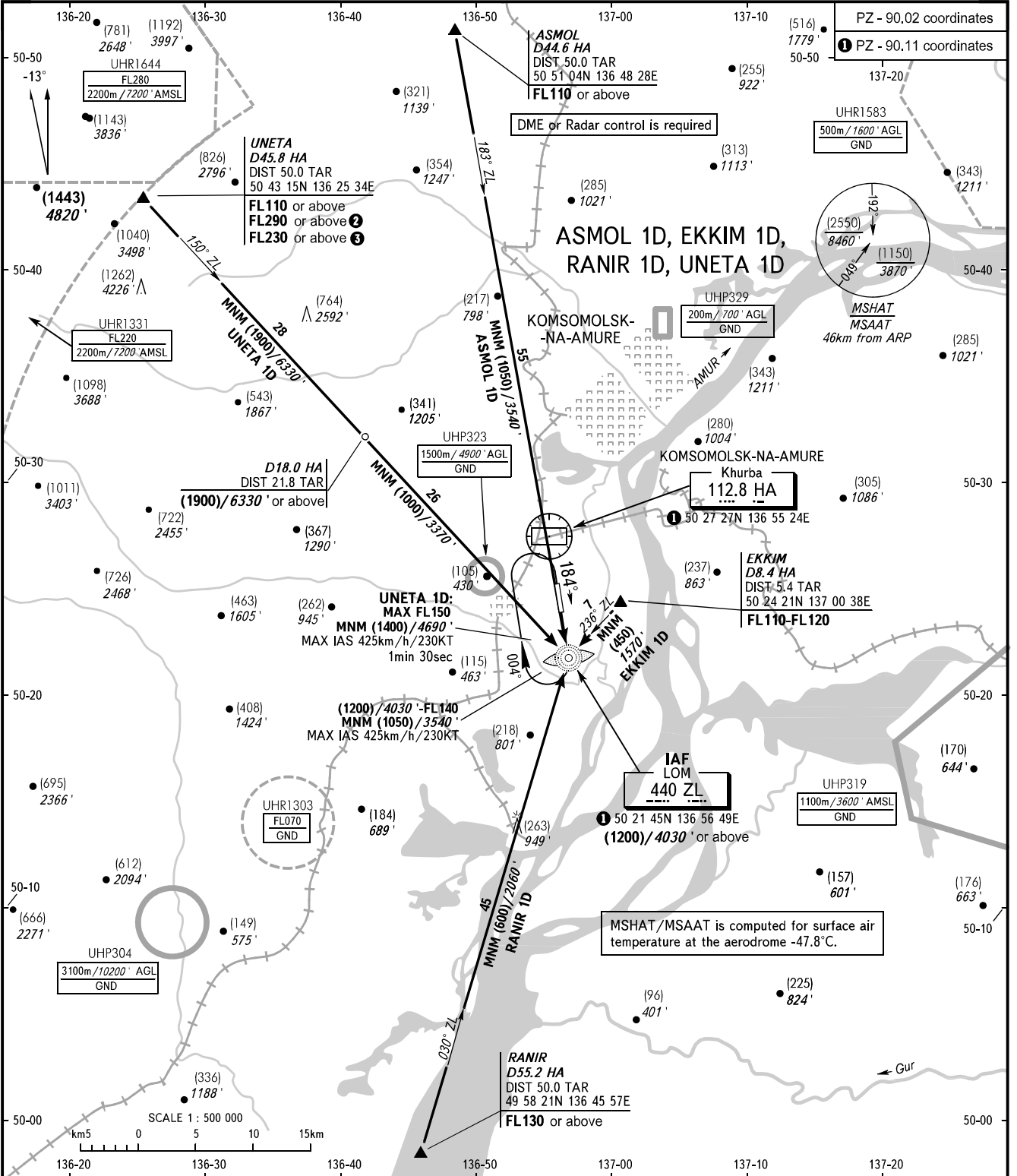


STANDARD ARRIVAL CHART  
INSTRUMENT (STAR) - ICAO

KOMSOMOLSK-NA-AMURE, RUSSIA  
KHURBA  
RWY 36

TRANSITION  
LEVEL : ①



① TRANSITION LEVEL:

- FL100 when QFE is 757mm mercury column (1009hPa) or above;
- FL110 when QFE is 730mm mercury column (973 hPa) or above, but less than 757mm mercury column (1009 hPa);
- FL120 when QFE is less than 730mm mercury column (973 hPa).

WARNING

UNETA 1D:

- ② FL290 or above, when UHR1644 is active, pass IAF at FL150, then descend to (1200)/4030' in the holding area.
- ③ FL230 or above, when UHR1331 is active, pass IAF at FL090, then descend to (1200)/4030' in the holding area.

BEARINGS AND TRACKS ARE MAGNETIC  
ALTITUDES IN FEET  
HEIGHTS IN METRES  
ELEVATIONS IN METRES AND FEET  
DISTANCES IN KILOMETRES

Alt set: -QFE(QNH on req);  
-mm(hPa on req).