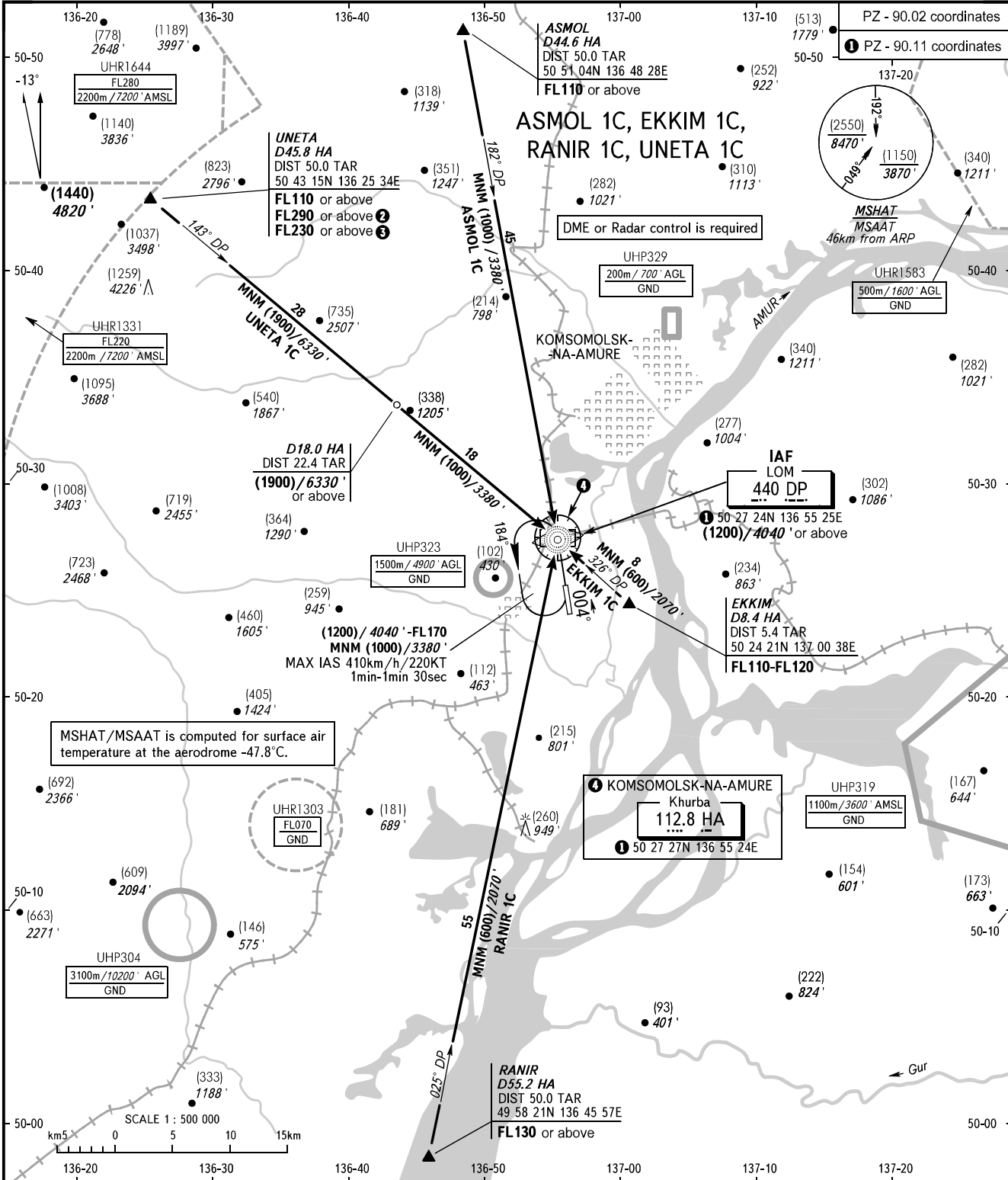


STANDARD ARRIVAL CHART  
INSTRUMENT (STAR) - ICAO

KOMSOMOLSK-NA-AMURE, RUSSIA  
KHURBA  
RWY 18

TRANSITION  
LEVEL: ①



MSHAT/MSAAT is computed for surface air temperature at the aerodrome -47.8°C.

NEGLINKA TOWER 122.000

- ① TRANSITION LEVEL:
- FL 100 when QFE is 757mm mercury column (1009hPa) or above;
  - FL 110 when QFE is 730mm mercury column (973 hPa) or above, but less than 757mm mercury column (1009 hPa);
  - FL 120 when QFE is less than 730mm mercury column (973 hPa).

**WARNING**  
UNETA 1C:

- ② FL290 or above, when UHR1644 is active, pass IAF at FL170, then descend to (1200)/4040' in the holding area.
- ③ FL230 or above, when UHR1331 is active, pass IAF at FL110, then descend to (1200)/4040' in the holding area.

BEARINGS AND TRACKS ARE MAGNETIC  
ALTITUDES IN FEET  
HEIGHTS IN METRES  
ELEVATIONS IN METRES AND FEET  
DISTANCES IN KILOMETRES

Alt set: -QFE(QNH on req);  
-mm(hPa on req).

CHANGE: New chart