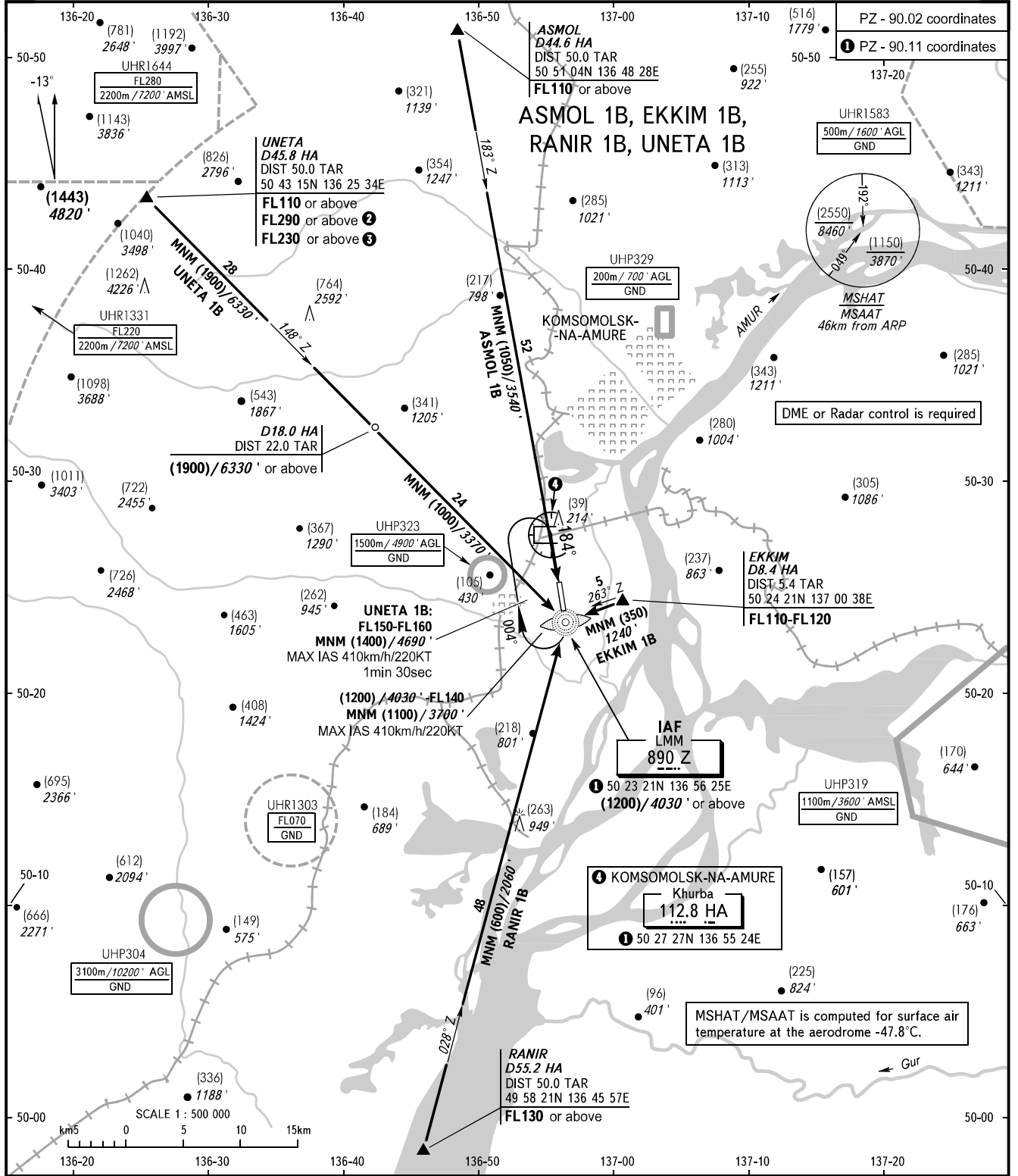


STANDARD ARRIVAL CHART
INSTRUMENT (STAR) - ICAO

KOMSOMOLSK-NA-AMURE, RUSSIA
KHURBA
RWY 36

TRANSITION
LEVEL : ①



- ① TRANSITION LEVEL:
 - FL100 when QFE is 757mm mercury column (1009hPa) or above;
 - FL110 when QFE is 730mm mercury column (973 hPa) or above, but less than 757mm mercury column (1009 hPa);
 - FL120 when QFE is less than 730mm mercury column (973 hPa).
- WARNING**
 UNETA 1B:
 ② FL290 or above, when UHR1644 is active, pass IAF at FL160, then descend to (1200)/4030' in the holding area.
 ③ FL230 or above, when UHR1331 is active, pass IAF at FL100, then descend to (1200)/4030' in the holding area.

BEARINGS AND TRACKS ARE MAGNETIC
 ALTITUDES IN FEET
 HEIGHTS IN METRES
 ELEVATIONS IN METRES AND FEET
 DISTANCES IN KILOMETRES

Alt set: -QFE(QNH on req);
 -mm(hPa on req).