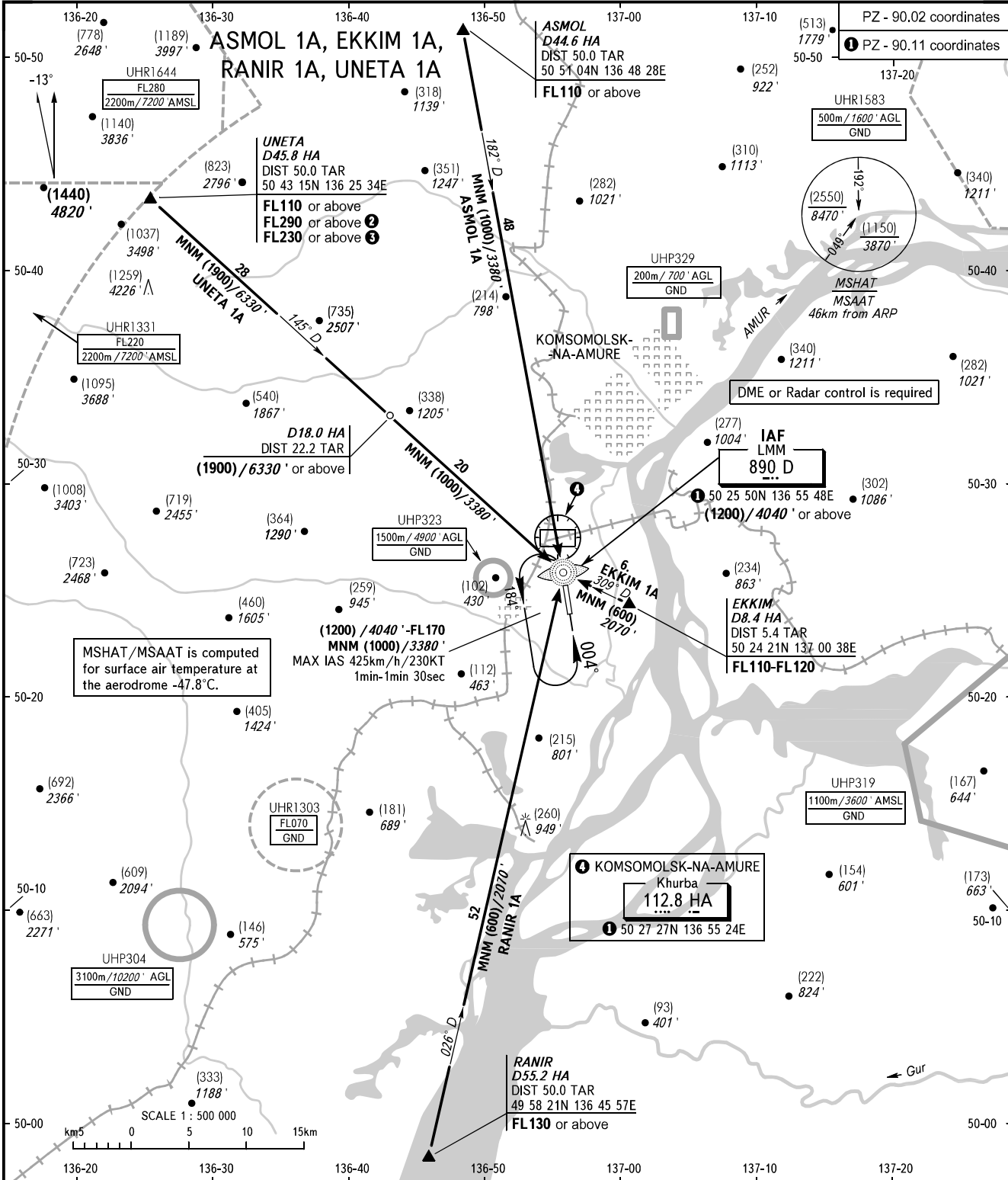


STANDARD ARRIVAL CHART
INSTRUMENT (STAR) - ICAO

KOMSOMOLSK-NA-AMURE, RUSSIA

KHURBA
RWY 18

TRANSITION
LEVEL: ①



PZ - 90.02 coordinates
① PZ - 90.11 coordinates

MSHAT/MSAAT is computed for surface air temperature at the aerodrome -47.8°C.

DME or Radar control is required

NEGLINKA TOWER 122.000

- ① TRANSITION LEVEL:
- FL 100 when QFE is 757mm mercury column (1009hPa) or above;
 - FL 110 when QFE is 730mm mercury column (973 hPa) or above, but less than 757mm mercury column (1009 hPa);
 - FL 120 when QFE is less than 730mm mercury column (973 hPa).

WARNING
UNETA 1A:
② FL290 or above, when UHR1644 is active, pass IAF at FL170, then descend to (1200)/4040' in the holding area.
③ FL230 or above, when UHR1331 is active, pass IAF at FL110, then descend to (1200)/4040' in the holding area.

BEARINGS AND TRACKS ARE MAGNETIC
ALTITUDES IN FEET
HEIGHTS IN METRES
ELEVATIONS IN METRES AND FEET
DISTANCES IN KILOMETRES

Alt set: -QFE(QNH on req);
-mm(hPa on req).

CHANGE: New chart