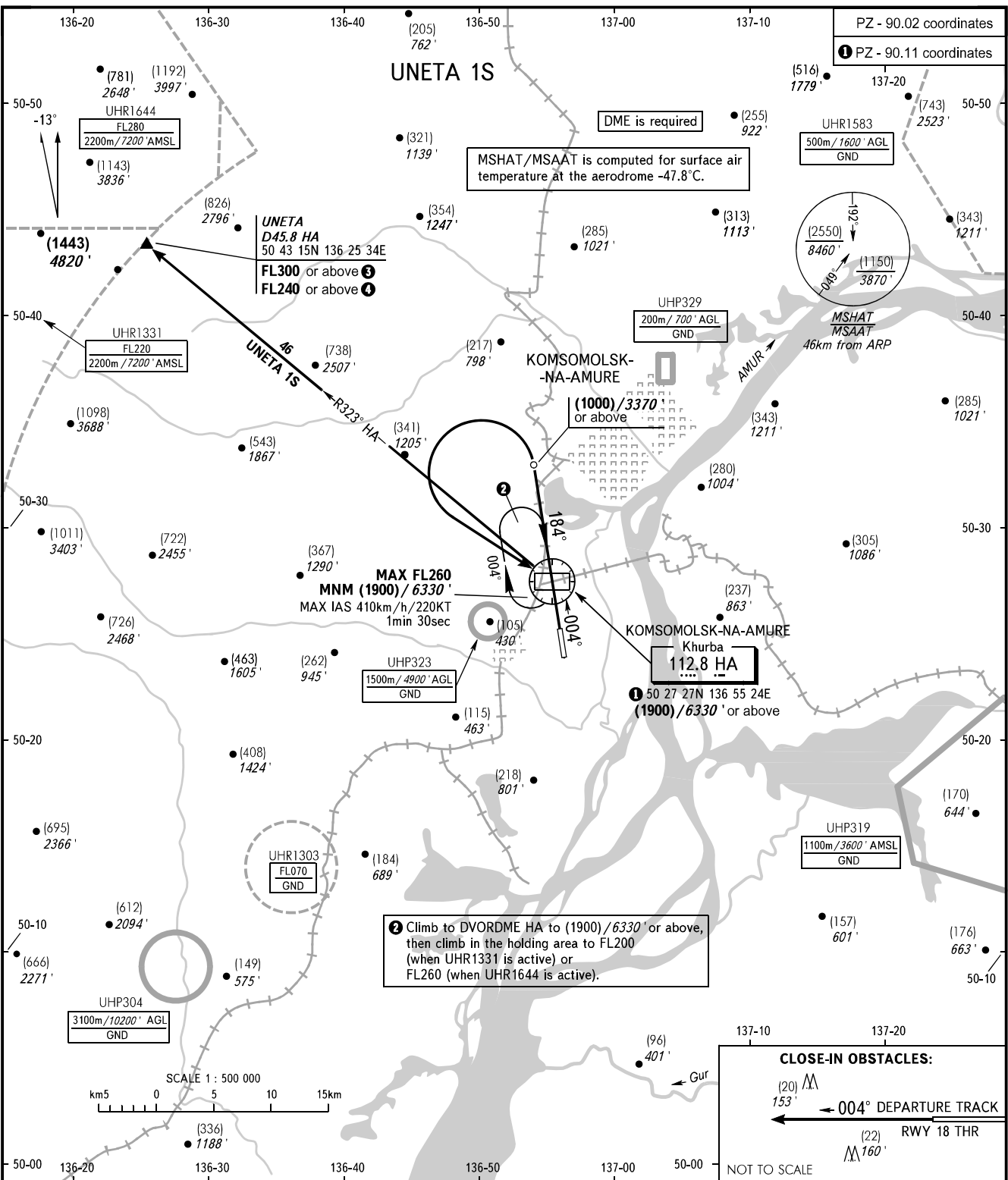


STANDARD DEPARTURE CHART
INSTRUMENT (SID) - ICAO

KOMSOMOLSK-NA-AMURE, RUSSIA
KHURBA
RWY 36

TRANSITION HGT: (2700)
TRANSITION ALT: 9000'



NEGLINKA TOWER 122.000

WARNING:
1. MNM climb gradient due to obstacles:
- 4.1% up to (1900)/6330' for UNETA 1S.
2. Holding area is AVBL by arrangement with ATS unit.
3. Turn before DVORDME HA is PROHIBITED.
UNETA 1S:
③ FL300 or above, when UHR1644 is active;
④ FL240 or above, when UHR1331 is active.

BEARINGS AND TRACKS ARE MAGNETIC
ALTITUDES IN FEET
HEIGHTS IN METRES
ELEVATIONS IN METRES AND FEET
DISTANCES IN KILOMETRES

Alt set: -QFE(QNH on req);
-mm(hPa on req).

CHANGE: New chart