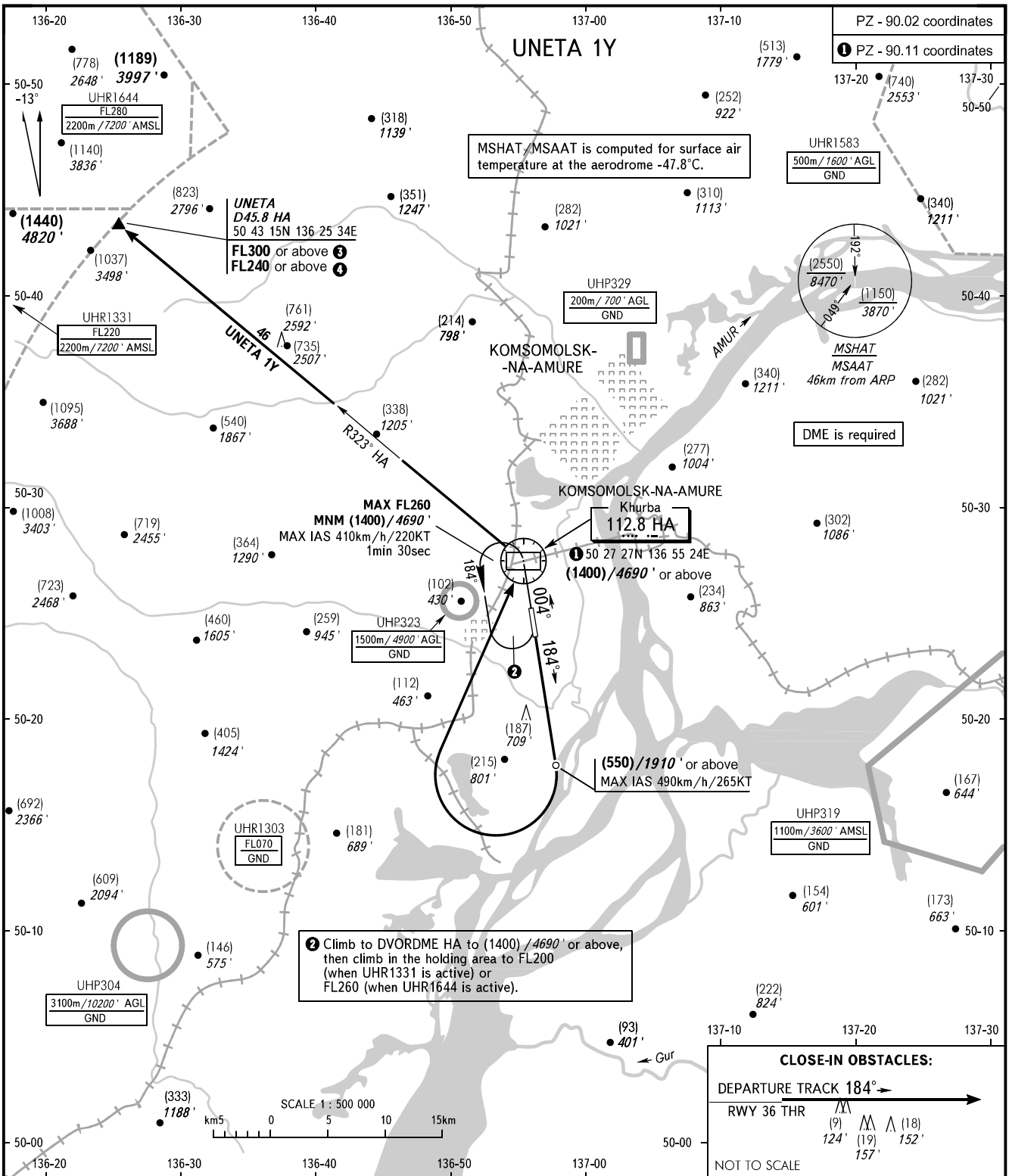


STANDARD DEPARTURE CHART
INSTRUMENT (SID) - ICAO

KOMSOMOLSK-NA-AMURE, RUSSIA
KHURBA
RWY 18

TRANSITION HGT: (2700)
TRANSITION ALT: 9000'



2 Climb to DVORDME HA to (1400) / 4690' or above, then climb in the holding area to FL200 (when UHR1331 is active) or FL260 (when UHR1644 is active).

CLOSE-IN OBSTACLES:

DEPARTURE TRACK 184° →

RWY 36 THR	(9)	(18)
	124'	152'
	(19)	
	157'	

NOT TO SCALE

NEGLINKA TOWER 122.000

WARNING
MNM climb gradient due to obstacles:
- 4.1% up to (1400) / 4690' for UNETA 1Y.
UNETA 1Y:
③ FL300 or above, when UHR1644 is active;
④ FL240 or above, when UHR1331 is active.

BEARINGS AND TRACKS ARE MAGNETIC
ALTITUDES IN FEET
HEIGHTS IN METRES
ELEVATIONS IN METRES AND FEET
DISTANCES IN KILOMETRES

Alt set: -QFE(QNH on req);
-mm(hPa on req).