

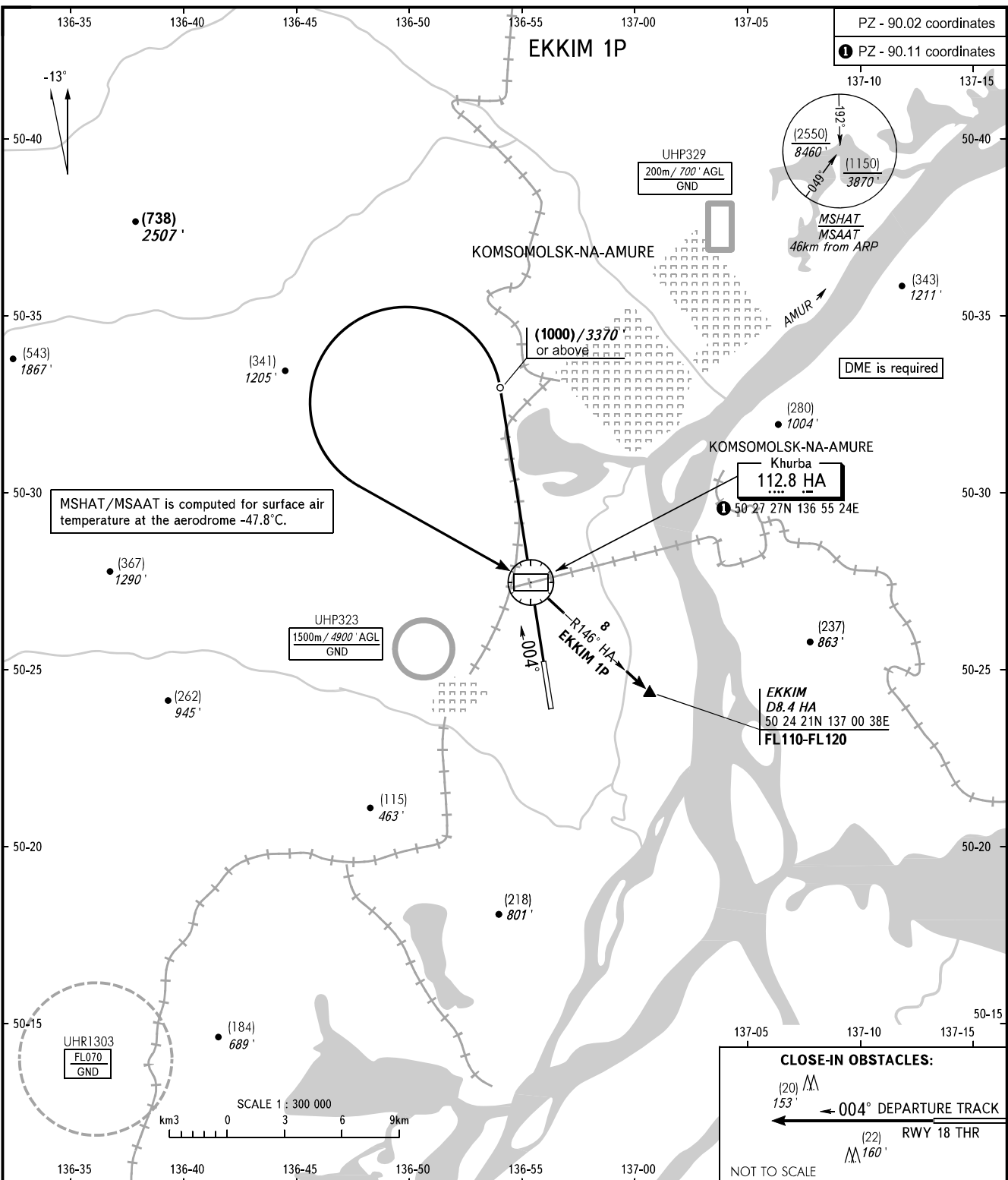
STANDARD DEPARTURE CHART
INSTRUMENT (SID) - ICAO

KOMSOMOLSK-NA-AMURE, RUSSIA

KHURBA

RWY 36

TRANSITION HGT: (2700)
TRANSITION ALT: 9000'



PZ - 90.02 coordinates
① PZ - 90.11 coordinates

MSHAT/MSAAT is computed for surface air temperature at the aerodrome -47.8°C.

DME is required

EKKIM
D8.4 HA
50 24 21N 137 00 38E
FL110-FL120

CLOSE-IN OBSTACLES:
 (20) 153'
 ← 004° DEPARTURE TRACK
 (22) RWY 18 THR
 160'
 NOT TO SCALE

WARNING:
 1. MNM climb gradient due to the airspace structure:
 - 6.8% up to FL110 for EKKIM 1P.
 2. Turn before DVORDME HA is PROHIBITED.

BEARINGS AND TRACKS ARE MAGNETIC
 ALTITUDES IN FEET
 HEIGHTS IN METRES
 ELEVATIONS IN METRES AND FEET
 DISTANCES IN KILOMETRES

Alt set: -QFE(QNH on req);
 -mm(hPa on req).