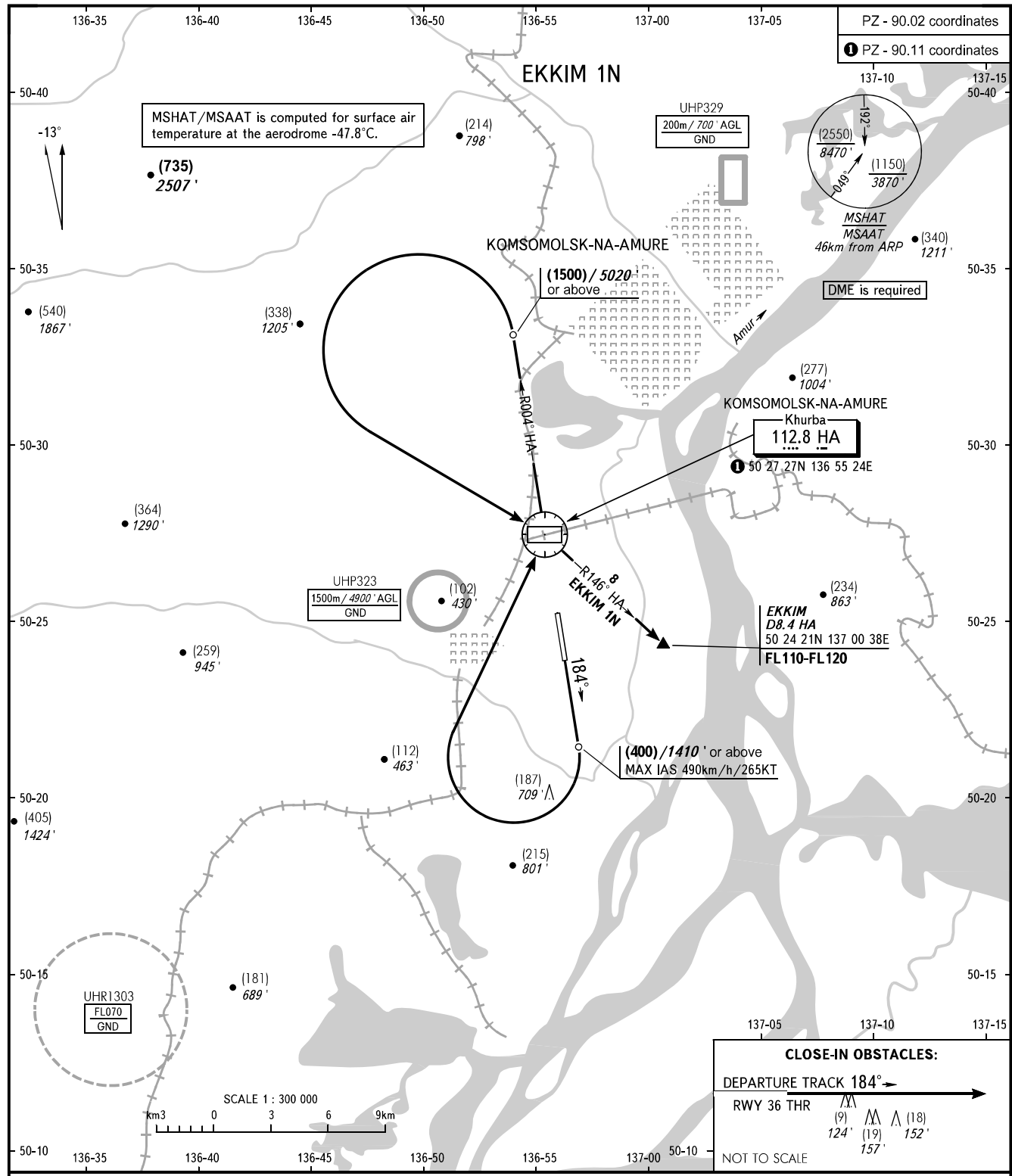


STANDARD DEPARTURE CHART
INSTRUMENT (SID) - ICAO

KOMSOMOLSK-NA-AMURE, RUSSIA
KHURBA
RWY 18

TRANSITION HGT: (2700)
TRANSITION ALT: 9000'



CLOSE-IN OBSTACLES:

DEPARTURE TRACK 184° →

RWY 36 THR	(9) 124'	(19) 157'	(18) 152'
------------	----------	-----------	-----------

NOT TO SCALE

NEGLINKA TOWER 122.000	WARNING: 1. MNM climb gradient due to obstacles : - 3.6% up to (300)/1090' for EKKIM 1N. 2. MNM climb gradient due to the airspace structure: - 3.4% up to FL110 for EKKIM 1N.
BEARINGS AND TRACKS ARE MAGNETIC ALTITUDES IN FEET HEIGHTS IN METRES ELEVATIONS IN METRES AND FEET DISTANCES IN KILOMETRES	Alt set: -QFE(QNH on req); -mm(hPa on req).

CHANGE: New chart