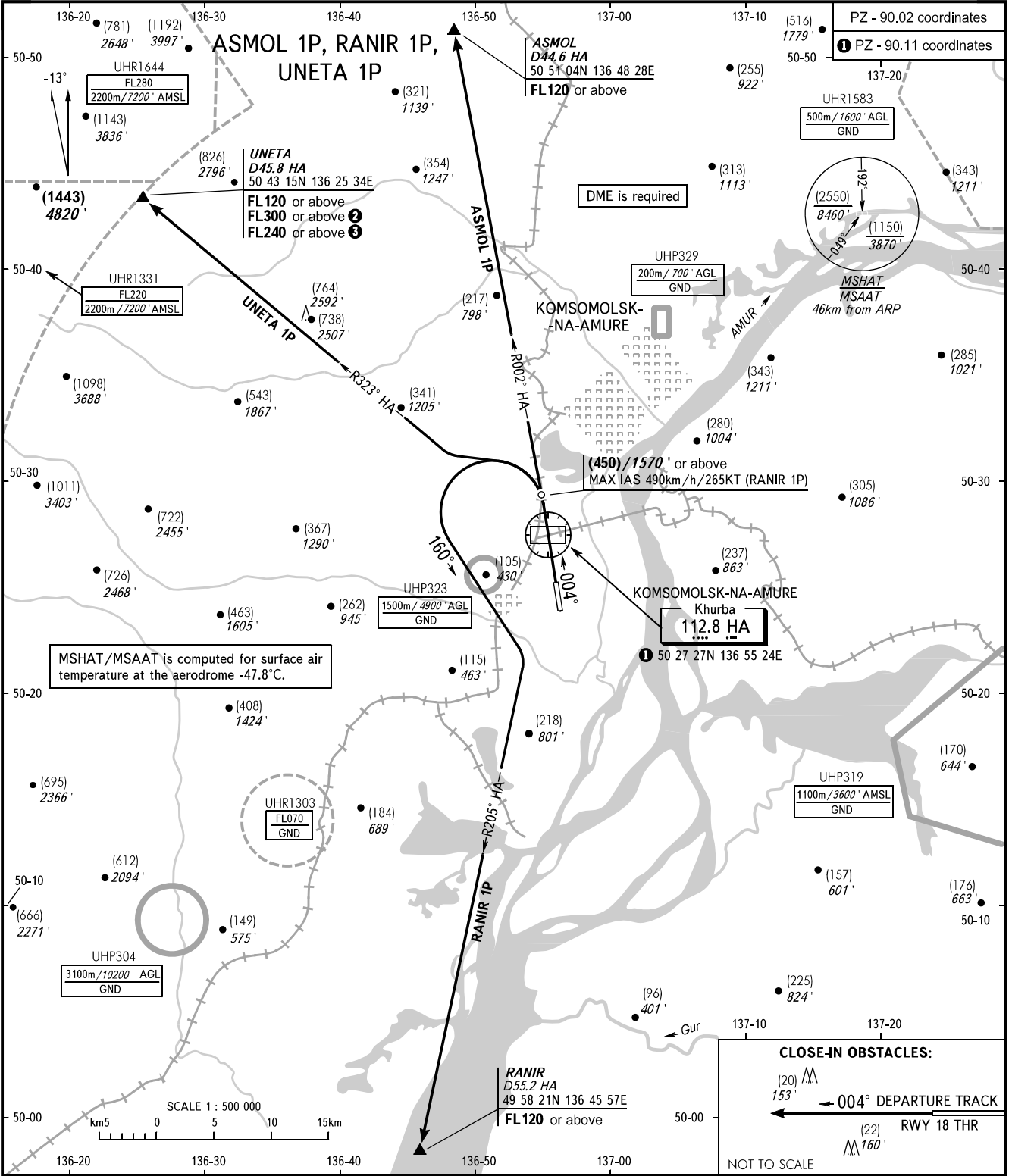


STANDARD DEPARTURE CHART
INSTRUMENT (SID) - ICAO

KOMSOMOLSK-NA-AMURE, RUSSIA
KHURBA
RWY 36

TRANSITION HGT: (2700)
TRANSITION ALT: 9000'



NEGLINKA TOWER 122.000

WARNING:
1. MNM climb gradient due to obstacles:
- 4.1% up to (1300)/4360' for UNETA 1P.
2. MNM climb gradients due to the airspace structure:
- 7.5% up to FL120 for ASMOL 1P;
- 4.8% up to FL120 for RANIR 1P;
- 7.1% up to FL120 for UNETA 1P.
UNETA 1P:
② 17.8% up to FL300, when UHR1644 is active;
③ 14.3% up to FL240, when UHR1331 is active.
3. Turn before DVORDME HA is PROHIBITED.

BEARINGS AND TRACKS ARE MAGNETIC
ALTITUDES IN FEET
HEIGHTS IN METRES
ELEVATIONS IN METRES AND FEET
DISTANCES IN KILOMETRES

Alt set: -QFE(QNH on req);
-mm(hPa on req).

CHANGE: New chart