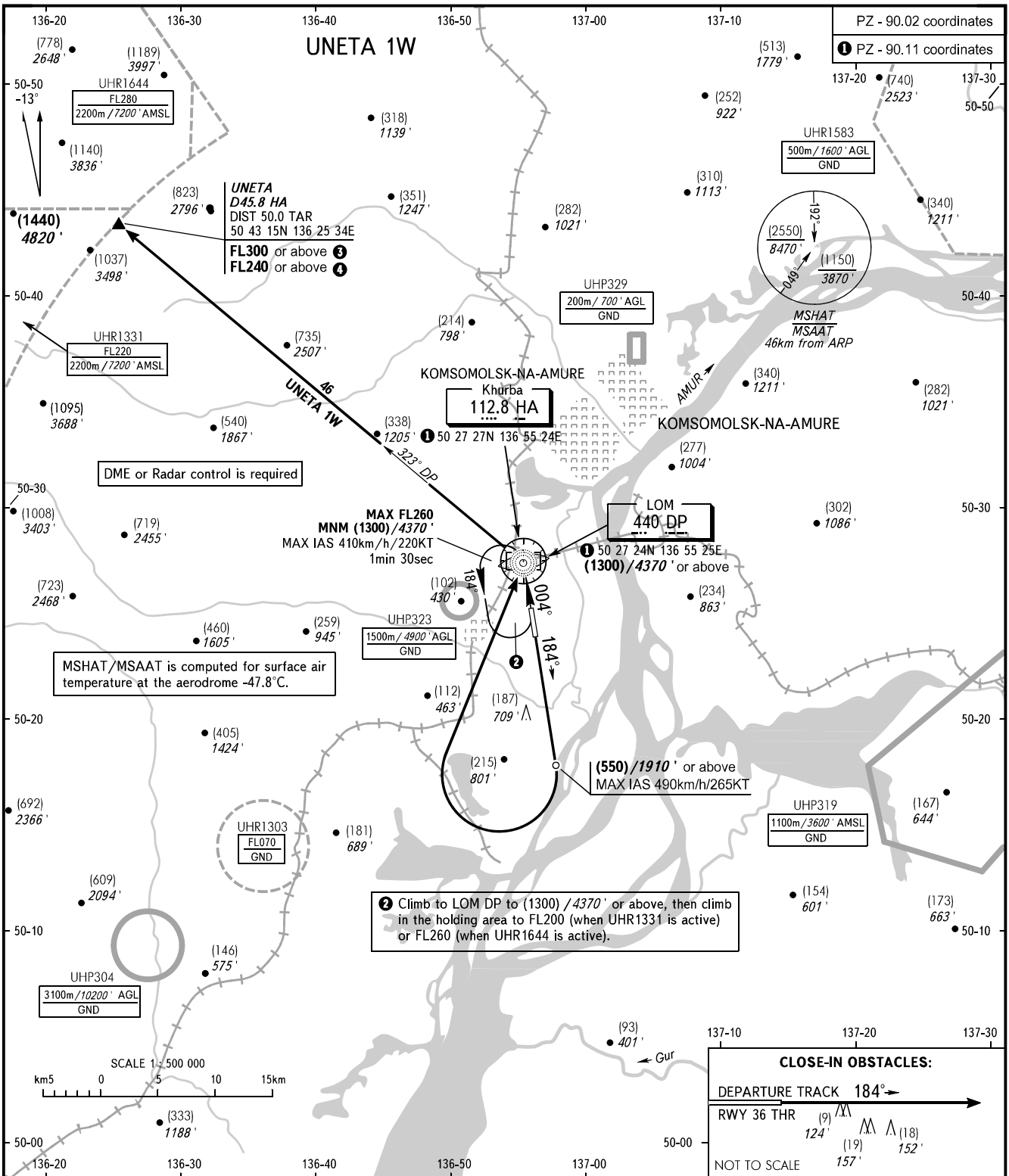


STANDARD DEPARTURE CHART  
INSTRUMENT (SID) - ICAO

KOMSOMOLSK-NA-AMURE, RUSSIA  
KHURBA  
RWY 18

TRANSITION HGT: (2700)  
TRANSITION ALT: 9000'



DME or Radar control is required

MSHAT/MSAAT is computed for surface air temperature at the aerodrome -47.8°C.

2 Climb to LOM DP to (1300) / 4370' or above, then climb in the holding area to FL200 (when UHR1331 is active) or FL260 (when UHR1644 is active).

CLOSE-IN OBSTACLES:	
DEPARTURE TRACK	184° →
RWY 36 THR	(9) 124' (18) 152' (19) 157'
NOT TO SCALE	

NEGLINKA TOWER 122.000

**WARNING:**  
MNM climb gradient due to obstacles:  
- 4.0% up to (1300)/4370' for UNETA 1W.  
UNETA 1W:  
③ FL300 or above, when UHR1644 is active;  
④ FL240 or above, when UHR1331 is active.

BEARINGS AND TRACKS ARE MAGNETIC  
ALTITUDES IN FEET  
HEIGHTS IN METRES  
ELEVATIONS IN METRES AND FEET  
DISTANCES IN KILOMETRES

Alt set: -QFE(QNH on req);  
-mm(hPa on req).

CHANGE: New chart