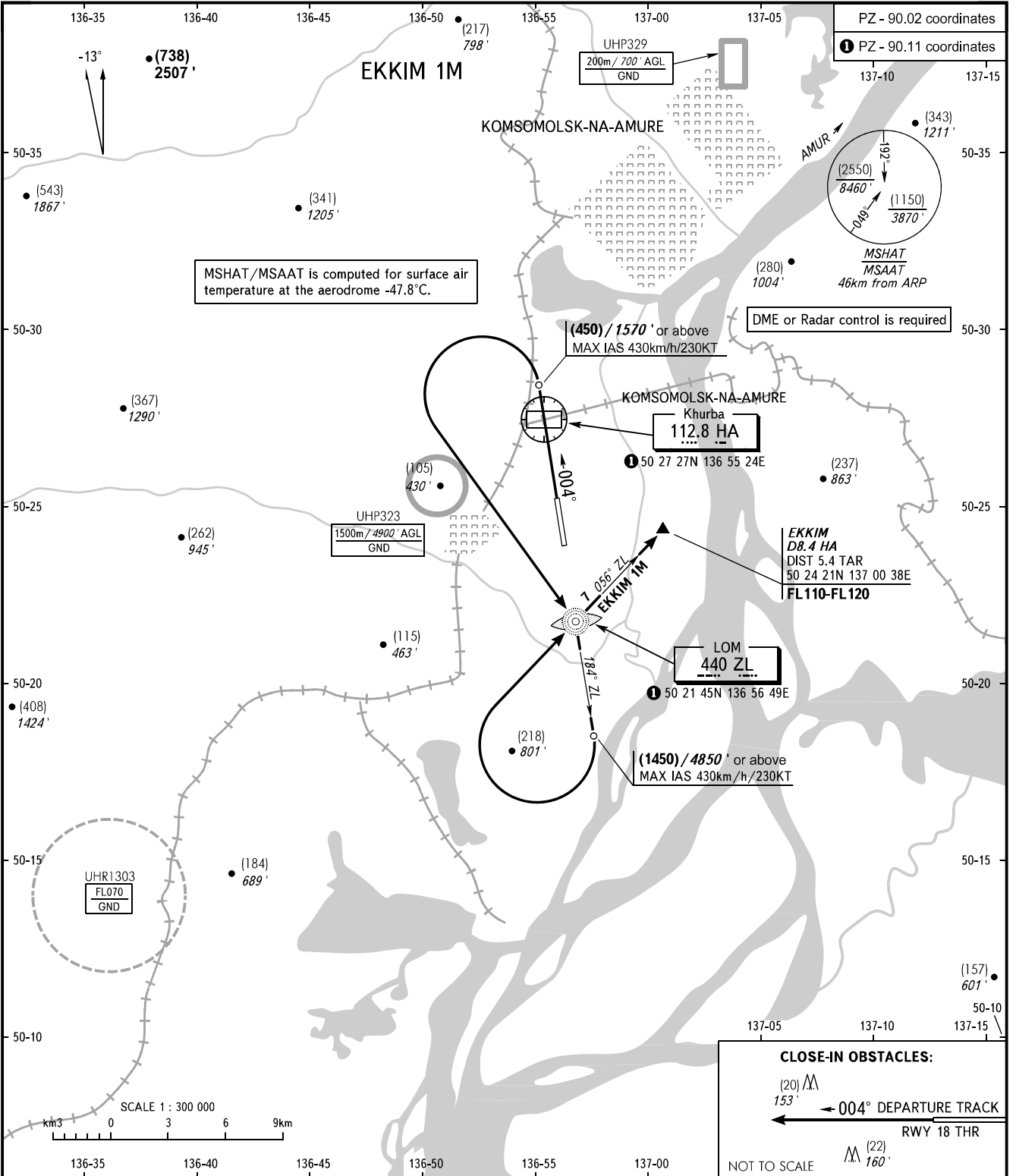


STANDARD DEPARTURE CHART
INSTRUMENT (SID) - ICAO

KOMSOMOLSK-NA-AMURE, RUSSIA
KHURBA
RWY 36

TRANSITION HGT: (2700)
TRANSITION ALT: 9000'



MSHAT/MSAAT is computed for surface air temperature at the aerodrome -47.8°C.

DME or Radar control is required

(450) / 1570' or above
MAX IAS 430km/h/230KT

(1450) / 4850' or above
MAX IAS 430km/h/230KT

EKKIM
D8.4 HA
DIST 5.4 TAR
50 24 21N 137 00 38E
FL110-FL120

LOM
440 ZL
50 21 45N 136 56 49E

CLOSE-IN OBSTACLES:
(20) 153' M
← 004° DEPARTURE TRACK
RWY 18 THR
(22) 160' M
NOT TO SCALE

NEGLINKA TOWER 122.000

WARNING:
1. MNM climb gradient due to the airspace structure:
- 4.2% up to FL110 for EKKIM 1M.
2. Turn before DVORDME HA is PROHIBITED.

BEARINGS AND TRACKS ARE MAGNETIC
ALTITUDES IN FEET
HEIGHTS IN METRES
ELEVATIONS IN METRES AND FEET
DISTANCES IN KILOMETRES

Alt set: -QFE(QNH on req);
-mm(hPa on req).