

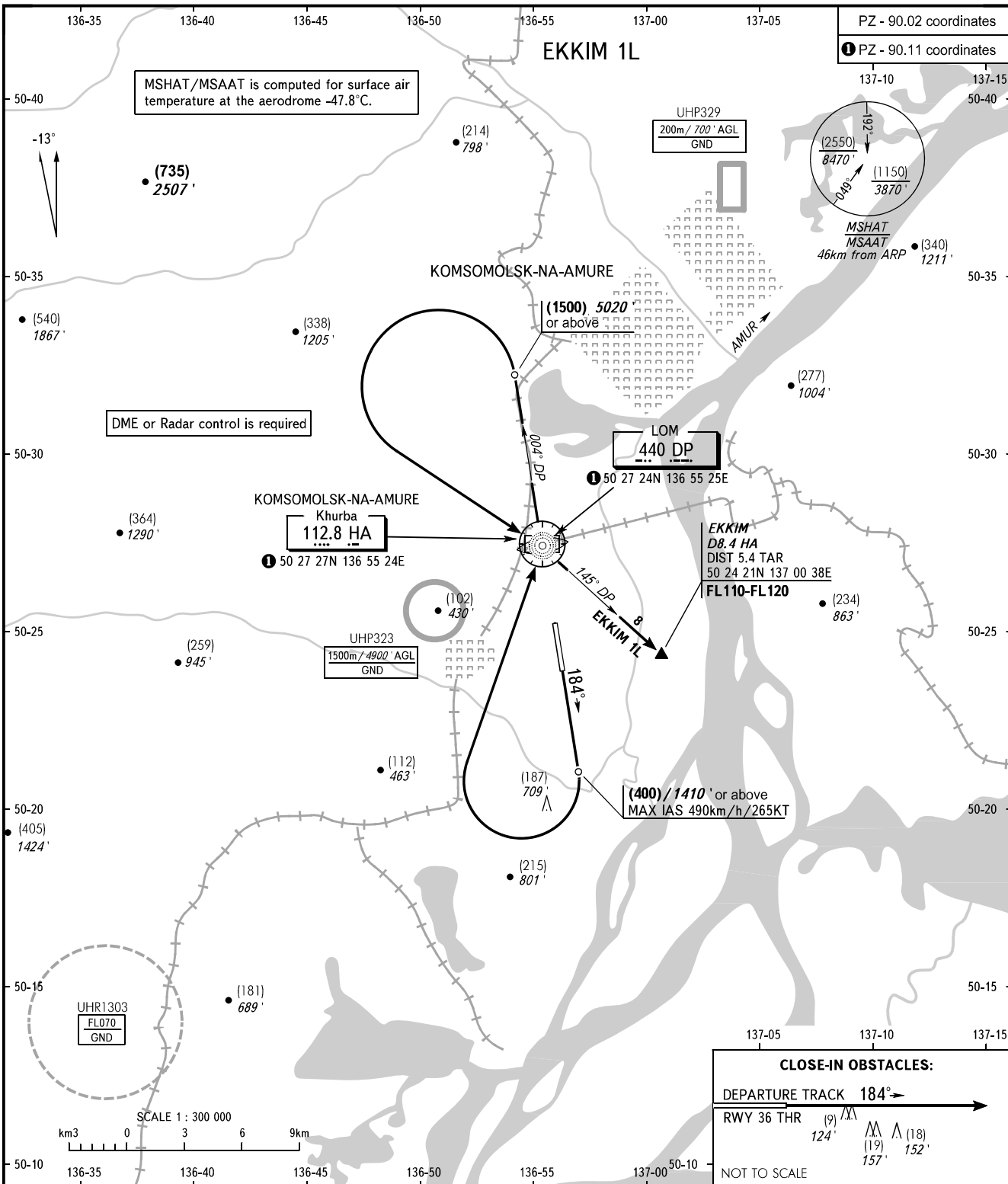
STANDARD DEPARTURE CHART  
INSTRUMENT (SID) - ICAO

KOMSOMOLSK-NA-AMURE, RUSSIA

KHURBA

RWY 18

TRANSITION HGT: (2700)  
TRANSITION ALT: 9000'



PZ - 90.02 coordinates  
PZ - 90.11 coordinates

MSHAT/MSAAT is computed for surface air temperature at the aerodrome -47.8°C.

DME or Radar control is required

KOMSOMOLSK-NA-AMURE  
Khurba  
112.8 HA  
50 27 27N 136 55 24E

LOM  
440 DP  
50 27 24N 136 55 25E

EKKIM  
DB.4 HA  
DIST 5.4 TAR  
50 24 21N 137 00 38E  
FL110-FL120

(400)/1410' or above  
MAX IAS 490km/h/265KT

CLOSE-IN OBSTACLES:

DEPARTURE TRACK	184°
RWY 36 THR	(9) 124' / (18) 152'
	(19) 157'
NOT TO SCALE	

NEGLINKA TOWER 122.000

- WARNING:**
- MNM climb gradient due to obstacles: -3.6% up to (300)/1090' for EKKIM 1L.
  - MNM climb gradient due to the airspace structure: -3.4% up to FL110 for EKKIM 1L.

BEARINGS AND TRACKS ARE MAGNETIC  
ALTITUDES IN FEET  
HEIGHTS IN METRES  
ELEVATIONS IN METRES AND FEET  
DISTANCES IN KILOMETRES

Alt set: -QFE(QNH on req);  
-mm(hPa on req).

CHANGE: New chart