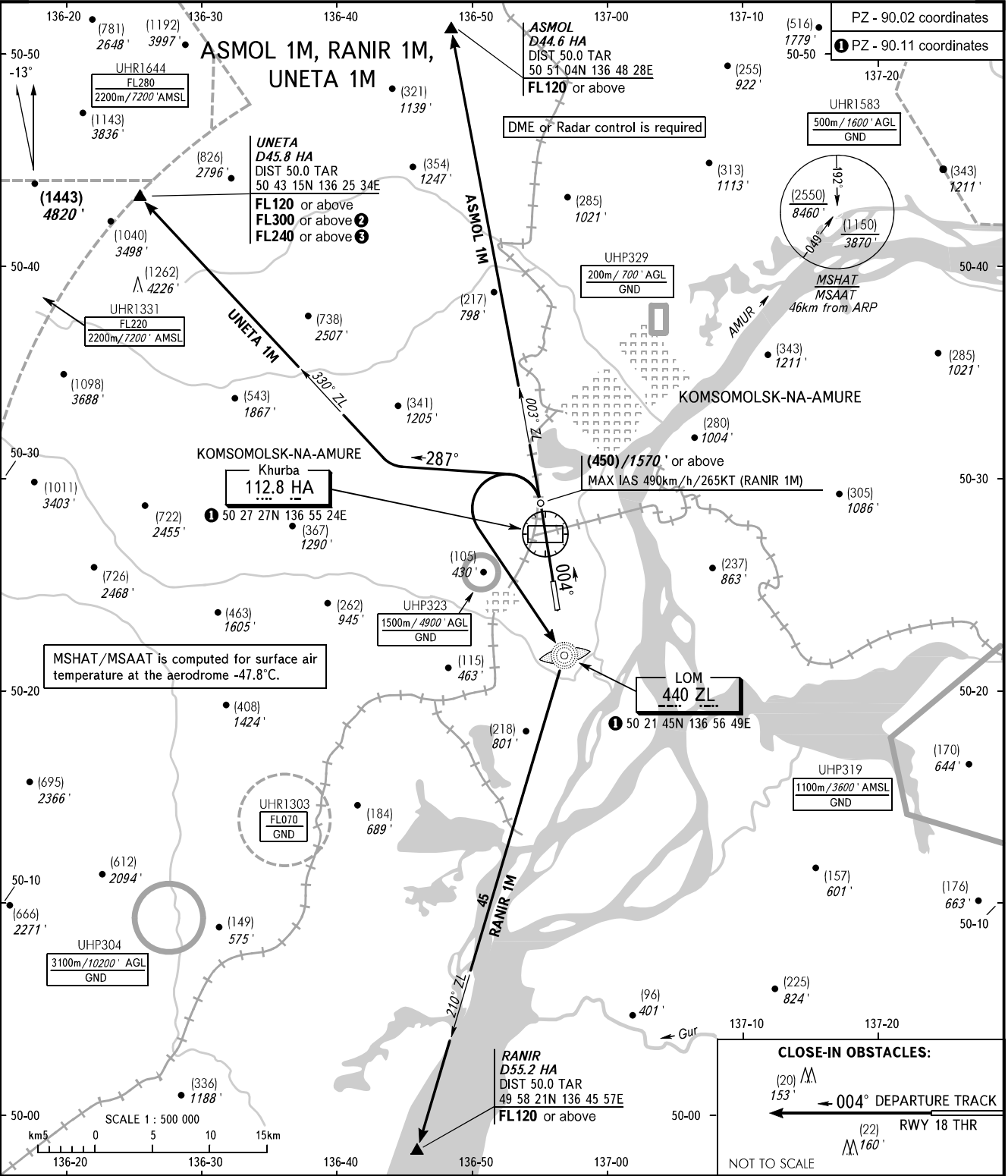


STANDARD DEPARTURE CHART
INSTRUMENT (SID) - ICAO

KOMSOMOLSK-NA-AMURE, RUSSIA

TRANSITION HGT: (2700)
TRANSITION ALT: 9000'



NEGLINKA TOWER
122.000

BEARINGS AND TRACKS ARE MAGNETIC
ALTITUDES IN **FEET**
HEIGHTS IN METRES
ELEVATIONS IN METRES AND **FEET**
DISTANCES IN KILOMETRES

Alt set: -QFE(QNH on req);
-mm(hPa on req).

WARNING:
1. MNM climb gradient due to obstacles:
- 4.1% up to (1750)/5830' for UNETA 1M.
2. MNM climb gradients due to the airspace structure:
- 7.5% up to FL120 for ASMOL 1M;
- 4.6% up to FL120 for RANIR 1M;
- 6.9% up to FL120 for UNETA 1M.
UNETA 1M:
② 17.3% up to FL300, when UHR1644 is active;
③ 13.9% up to FL240, when UHR1331 is active.
3. Turn before DVORDME HA is PROHIBITED.

CLOSE-IN OBSTACLES:
(20) 153'
← 004° DEPARTURE TRACK
(22) 160'
RWY 18 THR
NOT TO SCALE