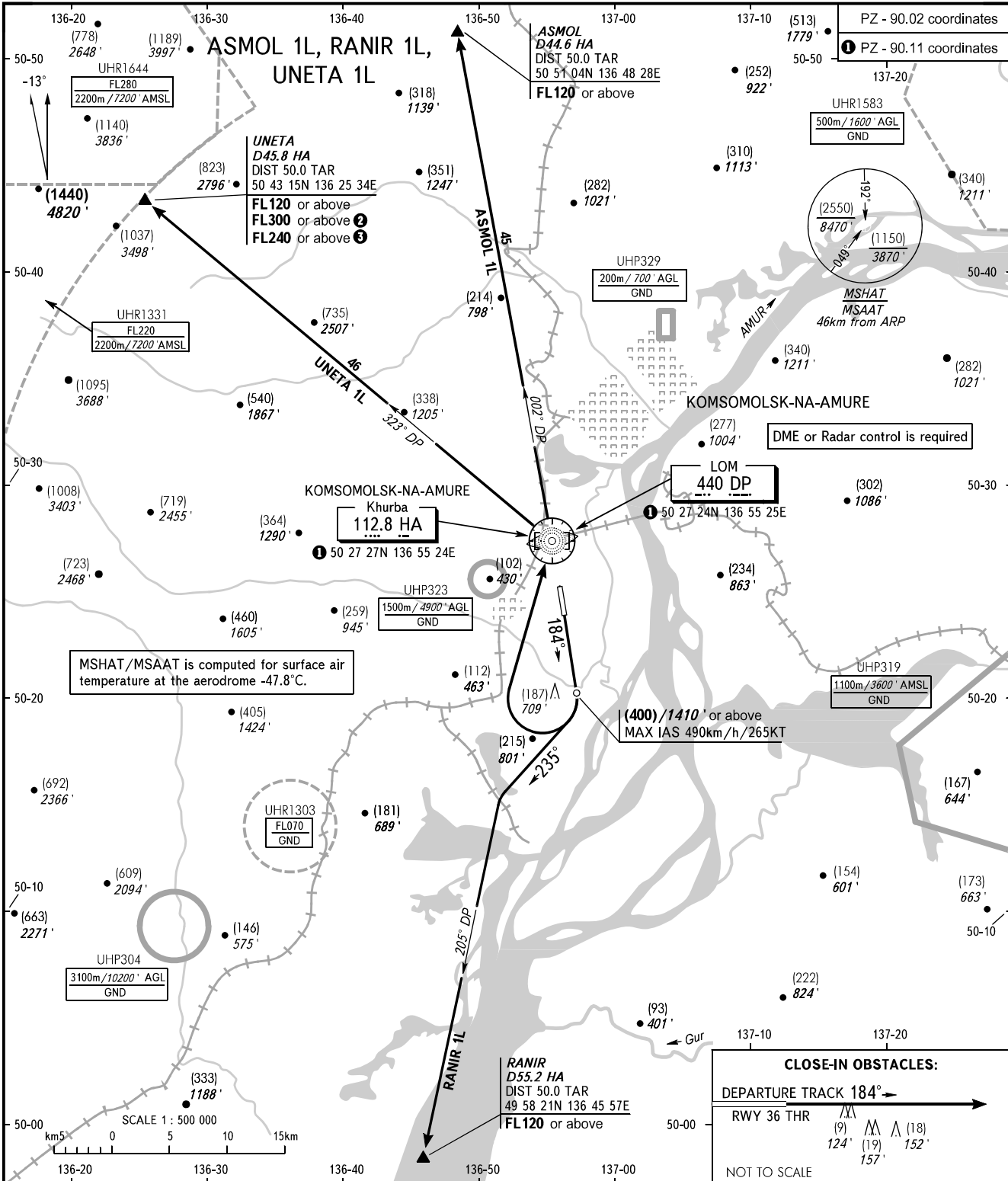


STANDARD DEPARTURE CHART
INSTRUMENT (SID) - ICAO

TRANSITION HGT: (2700)
TRANSITION ALT: 9000'

KOMSOMOLSK-NA-AMURE, RUSSIA
KHURBA
RWY 18



NEGLINKA TOWER 122.000

WARNING:

1. MNM climb gradient due to obstacles:
- 3.6% up to (300)/1090' for all SID's.
2. MNM climb gradients due to the airspace structure:
- 4.7% up to FL120 for ASMOL 1L;
- 7.3% up to FL120 for RANIR 1L;
- 4.6% up to FL120 for UNETA 1L.

UNETA 1L:

- ② 11.5% up to FL300, when UHR1644 is active;
- ③ 9.2% up to FL240, when UHR1331 is active.

BEARINGS AND TRACKS ARE MAGNETIC
ALTITUDES IN FEET
HEIGHTS IN METRES
ELEVATIONS IN METRES AND FEET
DISTANCES IN KILOMETRES

Alt set: -QFE(QNH on req);
-mm(hPa on req).