

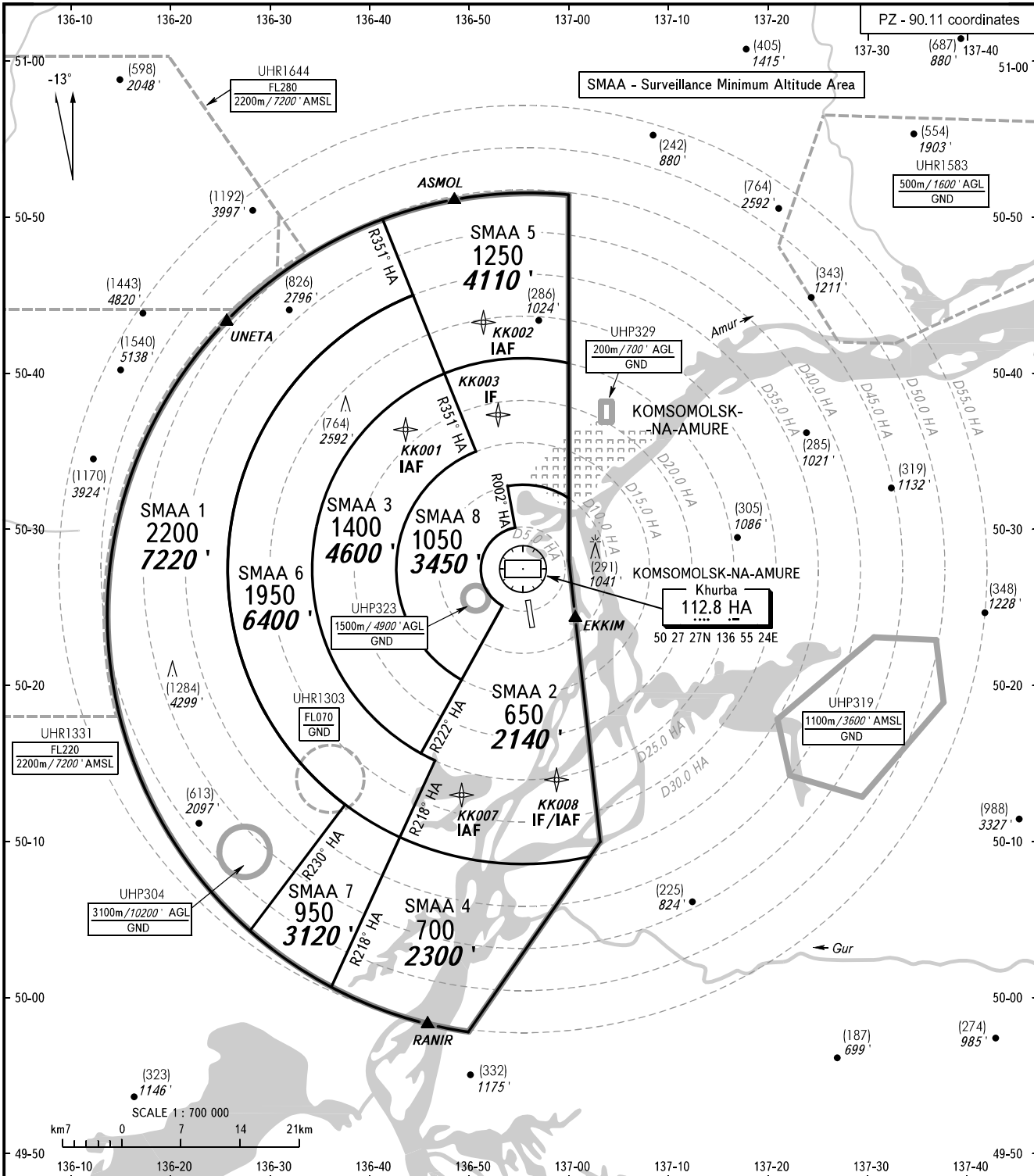
ATC SURVEILLANCE MINIMUM
ALTITUDE CHART - ICAO

KOMSOMOLSK-NA-AMURE, RUSSIA

KHURBA

ELEV
29m/96'

TRANSITION HGT : (2700)
TRANSITION ALT : 9000'



NEGLINKA TOWER 122.000

WARNING:

1. The chart may only be used for cross-checking of altitudes assigned while the aircraft is identified under radar control.
2. TEMPERATURE CORRECTION:
When vectoring is carried out under low-temperature conditions, minimum vectoring altitudes for IFR flight must be corrected by altimeter temperature correction by ATC.
3. COMMUNICATION FAILURE: In accordance with the procedures described in AIP.
4. OBST HGT are given relative to THR 36 ELEV.

BEARINGS AND TRACKS ARE MAGNETIC
ALTITUDES IN FEET
HEIGHTS IN METRES
ELEVATIONS IN METRES AND FEET
DISTANCES IN KILOMETRES

Alt set: -QFE(QNH on req);
-mm(hPa on req).

CHANGE: OBST

KOMSOMOLSK-NA-AMURE, RUSSIA
KHURBA**SURVEILLANCE MINIMUM ALTITUDE AREAS**

IDENT	MNM ALT (m/ft)	LATERAL LIMITS (PZ-90.11 coordinates)
SMAA 1	2200 7220'	501221N 1363741E - 500415N 1362817E, then along Komsomolsk-na-Amure/Khurba CTR boundary to 504949N 1364114E - 504458N 1364419E, then anticlockwise by arc of a circle radius of 35 km centred at 502727N 1365524E to 501221N 1363741E.
SMAA 2	650 2140'	503159N 1370000E, then anticlockwise by arc of a circle radius of 10 km centred at 502727N 1365524E to 503246N 1365351E - 503006N 1365437E, then anticlockwise by arc of a circle radius of 5 km centred at 502727N 1365524E to 502506N 1365321E - 501539N 1364513E, then anticlockwise by arc of a circle radius of 25 km centred at 502727N 1365524E to 501511N 1364638E - 501017N 1364309E, then anticlockwise by arc of a circle radius of 35 km centred at 502727N 1365524E to 500904N 1370205E, then along Komsomolsk-na-Amure/Khurba CTR boundary to 503159N 1370000E.
SMAA 3	1400 4600'	503958N 1364730E - 503458N 1365040E, then anticlockwise by arc of a circle radius of 15 km centred at 502727N 1365524E to 502022N 1364917E - 501539N 1364513E, then clockwise by arc of a circle radius of 25 km centred at 502727N 1365524E to 503958N 1364730E.
SMAA 4	700 2300'	501017N 1364309E, then anticlockwise by arc of a circle radius of 35 km centred at 502727N 1365524E до 500904N 1370205E, then along Komsomolsk-na-Amure/Khurba CTR boundary to 500041N 1363624E - 501017N 1364309E.
SMAA 5	1250 4110'	503958N 1364730E, then clockwise by arc of a circle radius of 25 km centred at 502727N 1365524E to 504037N 1370000E, then along Komsomolsk-na-Amure/Khurba CTR boundary to 504949N 1364114E - 503958N 1364730E.
SMAA 6	1950 6400'	504458N 1364419E - 503958N 1364730E, then anticlockwise by arc of a circle radius of 25 km centred at 502727N 1365524E to 501511N 1364638E - 501017N 1364309E, then clockwise by arc of a circle radius of 35 km centred at 502727N 1365524E to 504458N 1364419E.
SMAA 7	950 3120'	500415N 1362817E - 501221N 1363741E, then anticlockwise by arc of a circle radius of 35 km centred at 502727N 1365524E to 501017N 1364309E - 500041N 1363624E, then along Komsomolsk-na-Amure/Khurba CTR boundary to 500415N 1362817E.
SMAA 8	1050 3450'	503159N 1370000E, then anticlockwise by arc of a circle radius of 10 km centred at 502727N 1365524E to 503246N 1365351E - 503006N 1365437E, then anticlockwise by arc of a circle radius of 5 km centred at 502727N 1365524E to 502506N 1365321E - 502022N 1364917E, then clockwise by arc of a circle radius of 15 km centred at 502727N 1365524E to 503458N 1365040E - 503958N 1364730E, then clockwise by arc of a circle radius of 25 km centred at 502727N 1365524E to 504037N 1370000E, then along Komsomolsk-na-Amure/Khurba CTR boundary to 503159N 1370000E.