

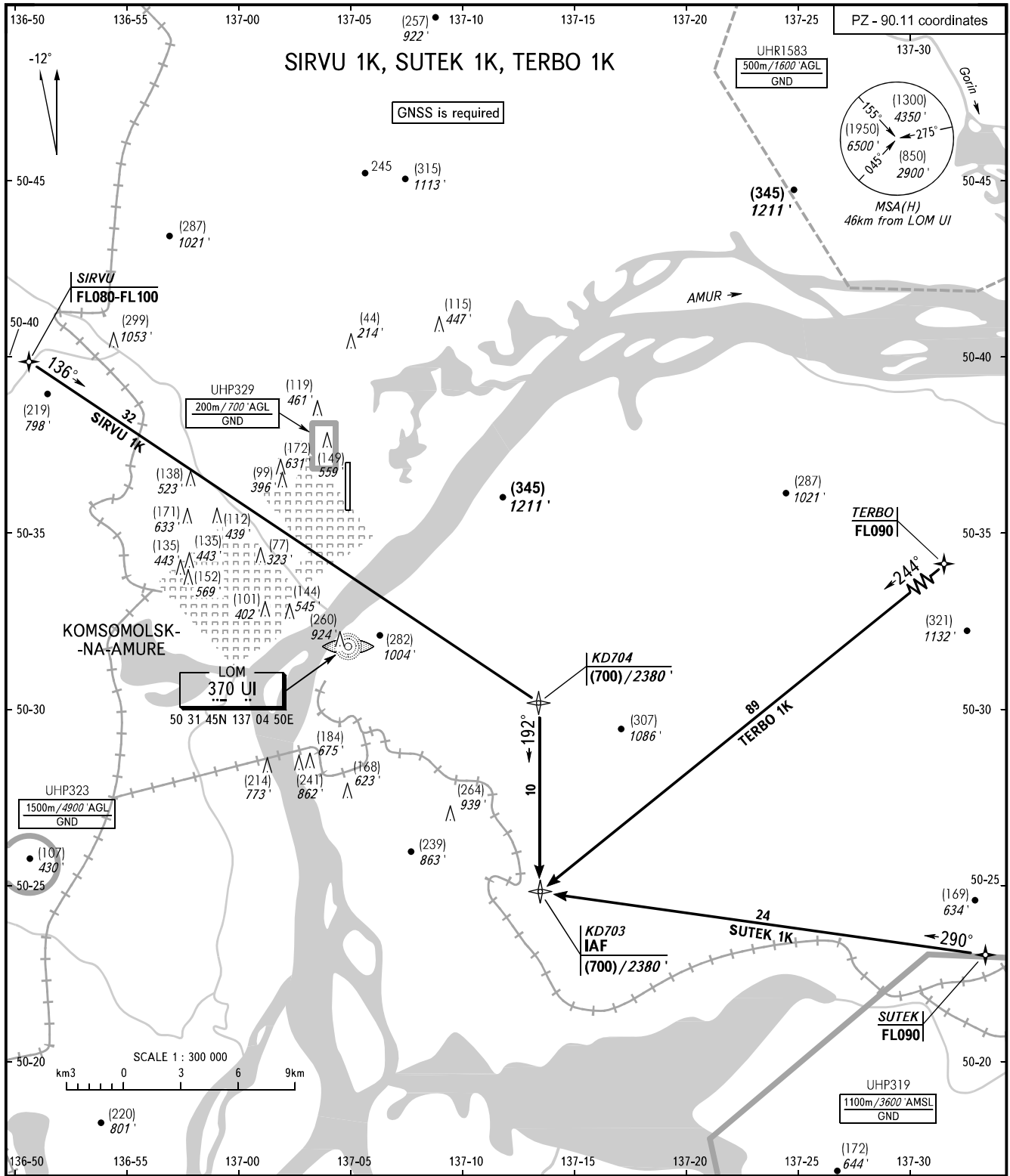
STANDARD ARRIVAL CHART
INSTRUMENT (STAR) - ICAO

KOMSOMOLSK-NA-AMURE, RUSSIA

DZEMGI

RNAV RWY 01

TRANSITION
LEVEL : **1**



1 TRANSITION LEVEL:
 - FL080 when QFE is 742mm mercury column or above (989 hPa);
 - FL090 when QFE is less than 742mm mercury column (989 hPa).

BEARINGS AND TRACKS ARE MAGNETIC
 HEIGHTS IN METRES, ALTITUDES IN FEET
 ELEVATIONS IN METRES AND FEET
 DISTANCES IN KILOMETRES

Alt set: -QFE(QNH on req);
 -mm(hPa on req).

CHANGE: Heading, OBST